



PARTS CATALOGUE

YW100 (5XB2) C SOUTH AMERICA

YW100 (5XP2) COLOMBIA

YW100 (5XR2) MEXICO

YW100
PARTS CATALOGUE
©2004 by Yamaha Motor Co., Ltd.
1st edition, September 2004
All rights reserved.
Any reprinting or unauthorized use
without the written permission of
Yamaha Motor Co., Ltd.
is expressly prohibited.

YW100
CATALOGO DE REPUESTOS
©2004 por Yamaha Motor Co., Ltd.
1ª edición, septiembre 2004
Todos los derechos reservados.
Toda reproducción o uso no autorizado
sin el consentimiento escrito de
Yamaha Motor Co., Ltd.
quedan expresamente prohibidos

FOREWORD

This Parts Catalogue is related to the parts for the model(s) on the cover page. When you are ordering replacement parts, please refer to this Parts Catalogue and quote both part numbers and part names correctly.

1. Modifications or additions which have been made after the issue of the Parts Catalogue will be announced in the Parts News.

It is advisable that you make the necessary corrections to the Parts Catalogue according to the Parts News.

2. Abbreviations

The following abbreviations are used in this Parts Catalogue.

“UR” Use specified parts number.

“UN” Use as many as needed.

“AP” Alternate Parts

“LM” Locally Made (Parts need to be ordered locally)

“F#” Frame No. (Applicable machine No.)

“O/S” Over Size

3. The number of components for assembly

- Parts, which are to be supplied in an assembly, are listed with a dot (.) in front of the part name as shown below.
- The numeral appearing to the right of each component part indicates the quantity of parts for each assembly unit.

PART NO.	DESCRIPTION	Q'TY	REMARKS
2F5-83310-60	FRONT FLASHER LIGHT ASSY	2	
115-83311-60	.BULB (6V-18W)	1	

4. Applicable colours of graphics are represented in the “REMARKS” as shown below.

PART NO.	DESCRIPTION	Q'TY	REMARKS
2N4-24110-00-X5	FUEL TANK COMP.	2	MXR
3J1-24240-10	.GRAPHIC, FUEL TANK	1	FOR MXR

5. Note that the illustrations for reference in finding parts numbers are not to be used for assembling. When assembling, please use the applicable service manual.

6. The asterisk (*) before a reference number indicates modified items after the first edition.

PROLOGO

Este catálogo de repuestos corresponde a las piezas para el o los modelos que figuran en la página de portada. Al formular el pedido de repuestos, se ruega citar este catálogo y especificar correctamente el número y el nombre de las piezas.

1. Las modificaciones y agregados que se hayan realizado después de la edición de este Catálogo de Repuestos, serán anunciados en las Informaciones de Recambios. Es recomendable que se hagan las correcciones necesarias en el Catálogo de Repuestos de acuerdo con las Informaciones de Recambios.

2. Abreviaciones

En este. Catálogo de Repuestos se emplean las siguientes abreviaciones.

“UR” Usar el número de partes especificado

“UN” Usar la cantidad necesaria

“AP” Piezas sustitutivas

“LM” Fabricación local (Hay que pedir los repuestos en las cercanías)

“F#” N° de bastidor (N° aplicable a la máquina)

“O/S” Sobredimensionado

3. La cantidad de componentes para el montaje

- Los componentes, suministrados como conjunto, se describen con un punto (.) que precede al nombre del parte como se indica a continuación.
- La numeración que aparece a la derecha de cada descripción indica la cantidad de partes por cada unidad de conjunto.

CODIGO N°	DESCRIPCION	CANT.	OBSERVACIONES
2F5-83310-60	ENSAMBLAJE DE LA LUZ	2	
115-83311-60	.BOMBILLA (6V-18W)	1	

4. Los colores de los componentes se indican como sigue en la columna de “OBSERVACIONES”.

CODIGO N°	DESCRIPCION	CANT.	OBSERVACIONES
2N4-24110-00-X5	COMP. DEL TANQUE	2	MXR
3J1-24240-10	.GRAFICO, DEL TANQUE	1	PARA MXR

5. Debe tenerse en cuenta que las ilustraciones sirven como guía para la búsqueda de los números de partes y no deben usarse para el montaje. Durante el montaje, se recomienda usar el manual de taller correspondiente.

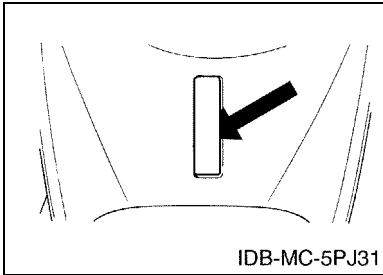
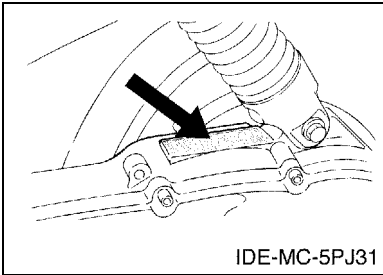
6. EL asterisco (*) antes del número de referencia indica los elementos modificados después de la primera edición.

FOREWORD

7. Applicable Serial No.

Engine Serial No.

Frame Serial No.



8. Applicable Colour Code (The (*) mark shows Model colour.)

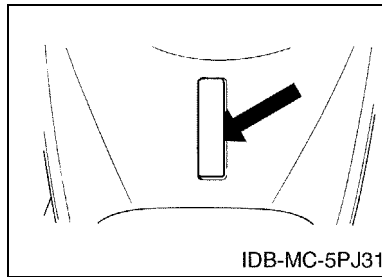
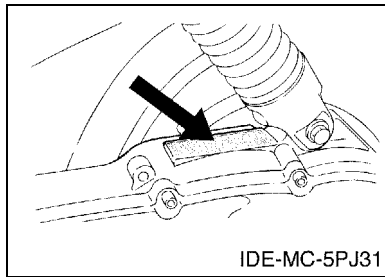
Abbreviation	Colour Name	Colour Code
DPBMC(*)	DEEP PURPLISH BLUE METALLIC C	0564
FS	FAIRY SILVER	001V
LGB	LOW GLOSS BLACK	0098
SMX(*)	BLACK METALLIC X	0903
STDS(*)	STARDUST SILVER	00WL
VRS5(*)	VIVID RED SOLID 5	0268
YB	YAMAHA BLACK	0033

PROLOGO

7. Números de serie

Nº de Serie del motor

Nº de Serie del bastidor



8. Códigos de color aplicables (El símbolo (*) muestra el color de modelo.)

Abreviatura	Nombre de color	Código de color
DPBMC(*)	DEEP PURPLISH BLUE METALLIC C	0564
FS	FAIRY SILVER	001V
LGB	LOW GLOSS BLACK	0098
SMX(*)	BLACK METALLIC X	0903
STDS(*)	STARDUST SILVER	00WL
VRS5(*)	VIVID RED SOLID 5	0268
YB	YAMAHA BLACK	0033

CONTENTS

ENGINE

CYLINDER	1
CRANKSHAFT & PISTON	2
AIR SHROUD & FAN	3
OIL PUMP	4
INTAKE	5
CARBURETOR	6
EXHAUST	7
CRANKCASE	8
STARTER	10
CLUTCH	11
TRANSMISSION	13

CHASSIS

FRAME	14
FENDER	15
SIDE COVER	16
OIL TANK	18
REAR SUSPENSION	19
FRONT FORK	20
FUEL TANK	22
SEAT	23
FRONT WHEEL	24
FRONT BRAKE CALIPER	25
REAR WHEEL	26
STEERING HANDLE & CABLE	27
FRONT MASTER CYLINDER	28
STAND	29
LEG SHIELD	30
COWLING 1	32
GENERATOR	34
STARTING MOTOR	35
FLASHER LIGHT	36
METER	37
HEADLIGHT	38
TAILLIGHT	39
HANDLE SWITCH & LEVER	40
ELECTRICAL 1	41
ELECTRICAL 2	42

INDEX

NUMERICAL INDEX	43
-----------------------	----

CONTENIDO

MOTOR

CILINDRO	1
CIGUENAL & PISTON	2
CUBIERTA DE AIRE & VENTILADOR	3
BOMBA DE ACEITE	4
ADMISION	5
CARBURADOR	6
DESCARGA	7
CARTER	8
ARRANQUE	10
EMBRAGUE	11
TRANSMISION	13

SHASIS

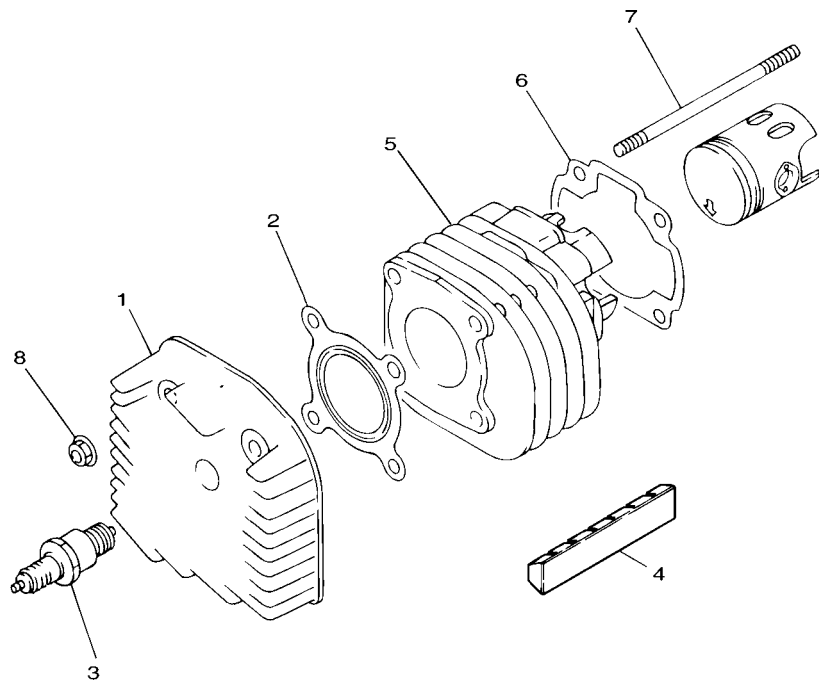
CUADRO	14
GUARDABARRO	15
CUBIERTA LATERAL	16
DEPOSITO DE ACEITE	18
SUSPENSION TRASERO	19
HORQUILLA DELANTERA	20
DEPOSITO DE COMBUSTIBLE	22
ASIENTO	23
RUEDA DELANTERA	24
CALIBRE FRENO DELANTERA	25
RUEDA TRASERA	26
MANILLAR & CABLE	27
CILINDRO MAESTRO DELANTERO	28
SOPORTE	29
PATA PROTEGIDA	30
BOVEDA 1	32
GENERADOR	34
MOTOR DE ARRANQUE	35
LUZ DE DESTELLADOR	36
MEDIDOR	37
FARO DELANTERO	38
LUZ DE COLA	39
INTERRUPTOR DE MANILLAR&PALANC	40
EQUIPO ELECTRICO 1	41
EQUIPO ELECTRICO 2	42

INDICE

INDICE NUMERICO	43
-----------------------	----

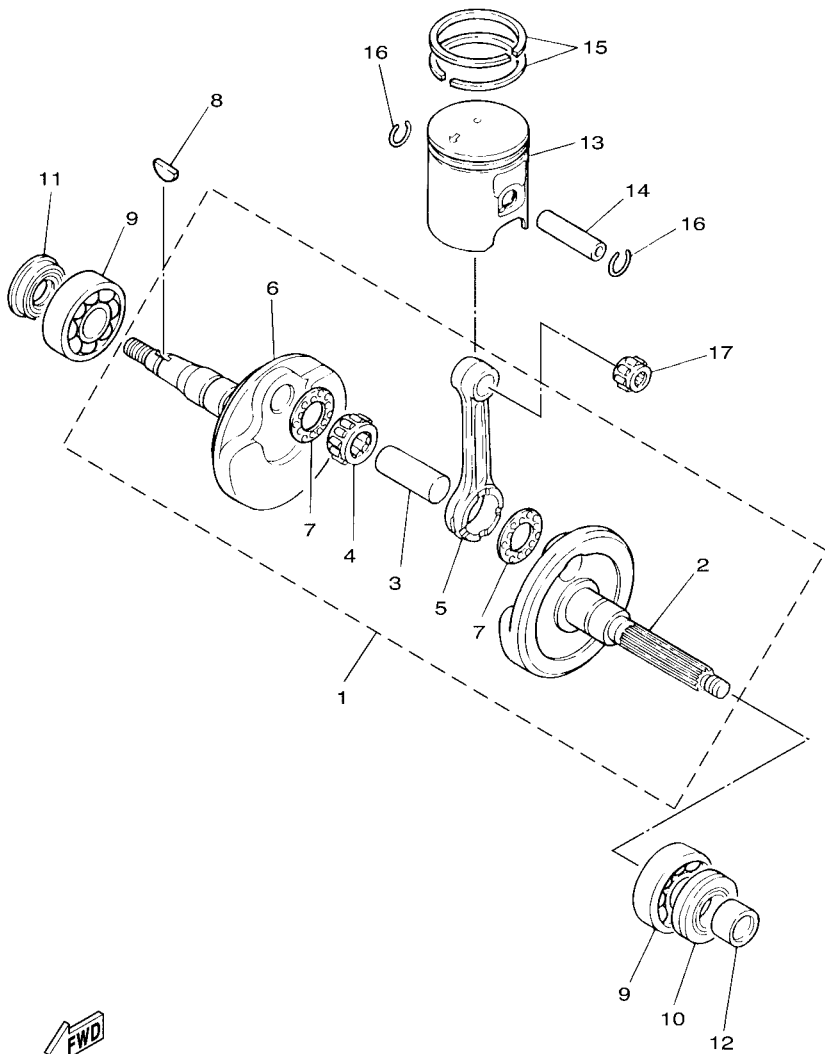
FIG. 1 CYLINDER

CILINDRO




4VP5200-7010

REF. NO.	PART NO. CODIGO Nº	DESCRIPTION DESCRIPCION				REMARKS OBSERVACIONES
			5XB2	5XP2	5XR2	
1	4VP-E1111-00	HEAD, CYLINDER 1 CULATA CILINDRO 1	1	1	1	
2	4VP-E1181-00	GASKET, CYLINDER HEAD 1 JUNTA, DE CULATA 1	1	1	1	
3	94700-00825	PLUG, SPARK BUJIA	1	1	1	
4	4VP-E1162-00	ABSORBER 2 AMORTIGUADOR 2	1	1	1	
5	4VP-E1311-10	CYLINDER 1 CILINDRO 1	1	1	1	
6	5FA-E1351-00	GASKET, CYLINDER JUNTA, DE CILINDRO	1	1	1	
7	90116-07834	BOLT, STUD ESPARRAGO	4	4	4	
8	90179-07381	NUT TUERCA	4	4	4	

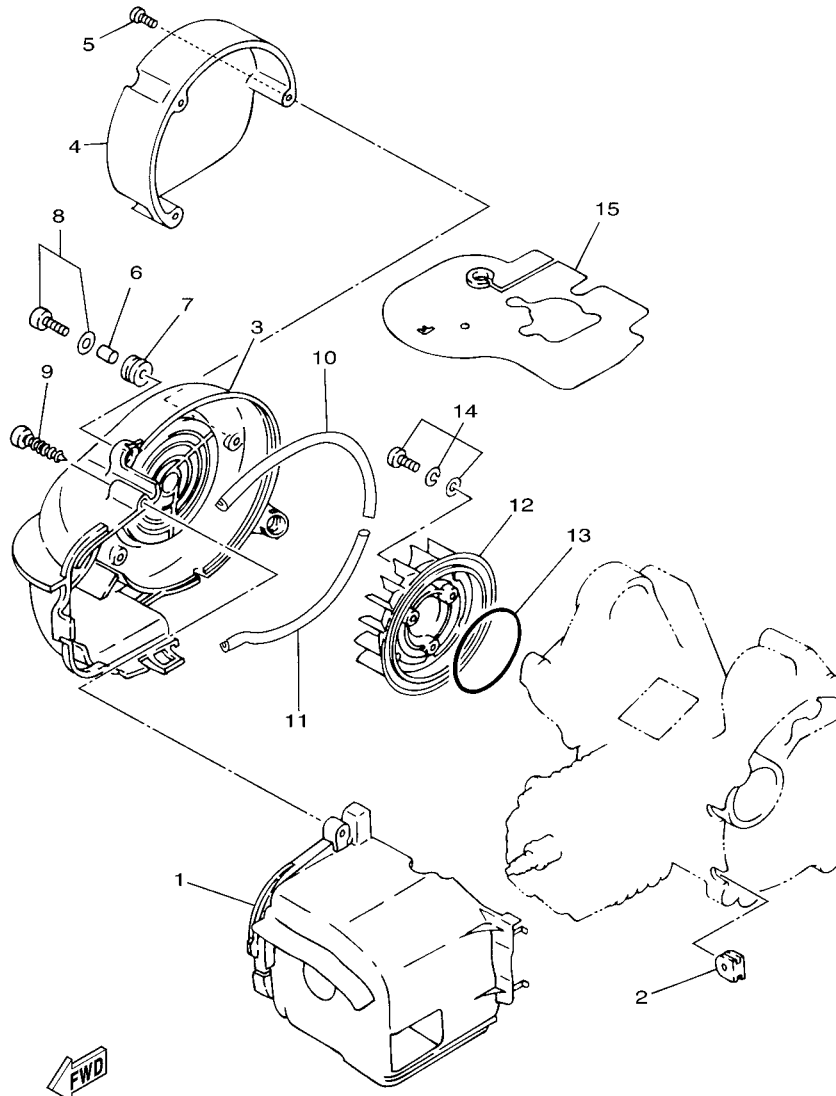



 3NW1414-9020

FIG. 2 CRANKSHAFT & PISTON

CIGUENAL & PISTON

REF. NO.	PART NO. CODIGO Nº	DESCRIPTION DESCRIPCION	5XB2	5XP2	5XR2	REMARKS OBSERVACIONES
1	4VP-E1400-00	CRANKSHAFT ASSY CIGUENAL COMPLETO	1	1	1	
2	4VP-E1412-00	.CRANK 1 .MANIVELA 1	1	1	1	
3	4DM-E1681-00	.PIN, CRANK 1 .PASADOR MANIVELA 1	1	1	1	
4	93310-41810	.BEARING .COJINETE DE RODILLOS	1	1	1	
5	4VP-E1651-00	.ROD, CONNECTING .BIELA	1	1	1	
6	4VP-E1422-00	.CRANK 2 .MANIVELA 2	1	1	1	
7	90209-18112	.WASHER .ARANDELA DE SEPARACION	1	1	1	
8	90280-03017	KEY, WOODRUFF CUNA WOODRUFF	1	1	1	
9	93306-205Y6	BEARING COJINETE	2	2	2	
10	93102-22464	OIL SEAL SELLO ACEITE	1	1	1	
11	93101-20169	OIL SEAL SELLO ACEITE	1	1	1	
12	90387-178N6	COLLAR COLLAR	1	1	1	
13	4VP-E1631-10-A0	PISTON (STD) PISTON (NORMA)	1	1	1	
14	4VP-E1633-00	PIN, PISTON PASADOR, PISTON	1	1	1	
15	4VP-E1603-00	PISTON RING SET (STD) JUEGO DE ANILLOS (NORMA)	1	1	1	
16	93450-16115	CIRCLIP SEGURO	2	2	2	
17	93310-21403	BEARING COJINETE DE RODILLOS	1	1	1	



4VP1414-7030

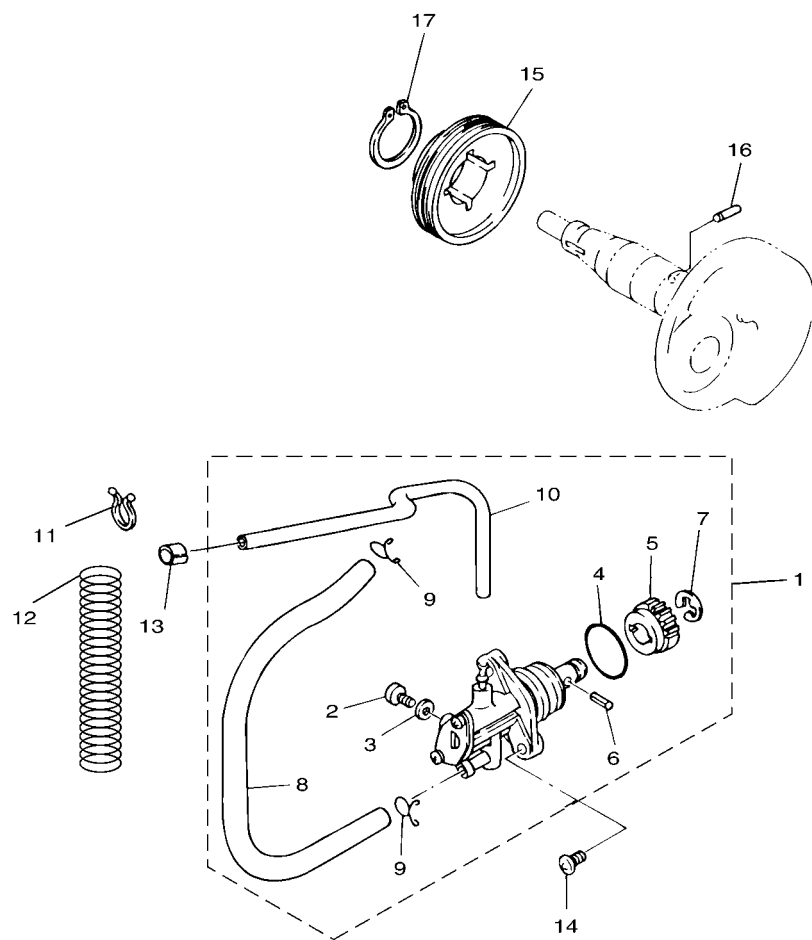
FIG. 3 AIR SHROUD & FAN

CUBIERTA DE AIRE & VENTILADOR

REF. NO.	PART NO. CODIGO Nº	DESCRIPTION DESCRIPCION	5XB2	5XP2	5XR2	REMARKS OBSERVACIONES
1	5FA-E2651-10	AIR SHROUD, CYLINDER 1 CUBIERTA DE PASO DE AIRE 1	1	1	1	
2	90480-11866	GROMMET TAPON	1	1	1	
3	5FA-E2653-02	AIR SHROUD, CYLINDER 3 CUBIERTA DE PASO DE AIRE 3	1	1	1	
4	4DY-E262H-00	GUIDE 1 GUIA 1	1	1	1	
5	97707-40514	SCREW, TAPPING TORNILLO ROSCA HEMBRA	3	3	3	
6	90387-068J5	COLLAR COLLAR	3	3	3	
7	90480-12497	GROMMET TAPON	3	3	3	
8	97607-06220	SCREW, WITH WASHER TORNILLO CAB CON PLANA C/ARAN	3	3	3	
9	97707-60540	SCREW, TAPPING TORNILLO ROSCA HEMBRA	1	1	1	
10	4VP-E2658-00	DAMPER, AIR SHROUD 1 AMORTIGUADOR DE CUBIERTA 1	1	1	1	
11	4VP-E2659-00	DAMPER, AIR SHROUD 2 AMORTIGUADOR DE CUBIERTA 2	1	1	1	
12	4VP-E2611-00	FAN VENTILADOR	1	1	1	
13	93210-64893	O-RING ANILLO O	1	1	1	
14	90119-06857	BOLT, WITH WASHER TORNILLO CON ARANDELA	3	3	3	
15	3XG-E2631-00	DEFLECTOR 1 DEFLECTOR 1	1	1	1	

FIG. 4 OIL PUMP

BOMBA DE ACEITE




4VP1414-7042

REF. NO.	PART NO. CODIGO Nº	DESCRIPTION DESCRIPCION	5XB2	5XP2	5XR2	REMARKS OBSERVACIONES
1	5FA-E3100-11	OIL PUMP ASSY BOMBA DE ACEITE COMPLETA	1	1	1	
2	3WF-13185-00	.BOLT, BREATHER .PERNO DE RESPIRADERO	1	1	1	
3	1YU-13187-00	.GASKET, BREATHER BOLT .EMPAQUE TORNILLO P/RESPIRADER	1	1	1	
4	1YU-13473-00	.O-RING .ANILLO O	1	1	1	
5	3AA-13124-00	.GEAR WORM WHEEL (40T) .ENGRUJE ROSCA SINFIN (40T)	1	1	1	
6	1YU-13516-00	.PIN, DOWEL .PASADOR, DE ESPIGA	1	1	1	
7	1YU-13577-00	.CLIP .PRESILLA	1	1	1	
8	4VP-E316F-00	.HOSE, OIL 1 .MANGUERA, DE ACEITE 1	1	1	1	
9	90467-08003	.CLIP .PRESILLA	2	2	2	
10	90445-05431	.HOSE (L240) .TUBO (L240)	1	1	1	
11	90464-16801	CLAMP BRIDA	1	1	1	
12	90501-08845	SPRING, COMPRESSION RESORTE DE COMPRESION	1	1	1	
13	90468-02033	CLIP PRESILLA	1	1	1	
14	98507-05014	SCREW, PAN HEAD TORNILLO DE CABEZA PLANA	2	2	2	
15	4VP-13178-00	GEAR, PUMP DRIVE ENGRANAJE TRACC.DE BOMBA	1	1	1	
16	93603-12827	PIN, DOWEL PASADOR DE CLAVIJA	1	1	1	
17	99009-19400	CIRCLIP PRESILLA REDONDA	1	1	1	

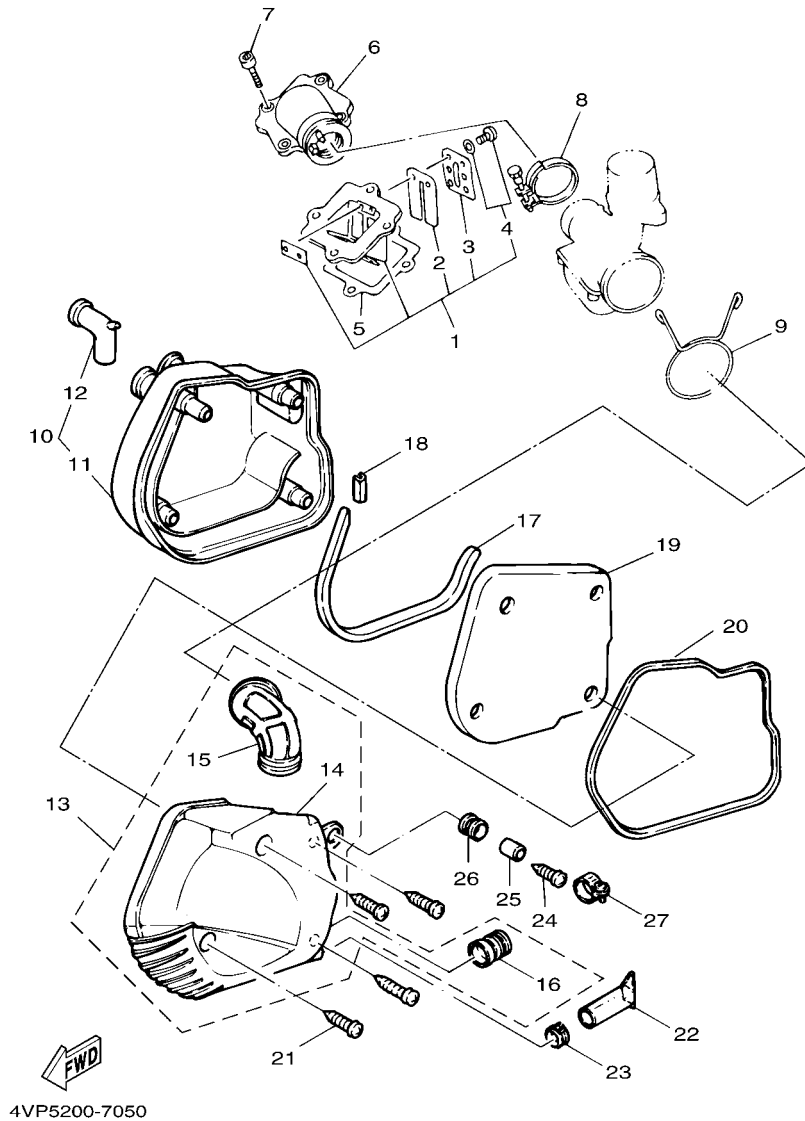


FIG. 5 INTAKE

ADMISION

REF. NO.	PART NO. CODIGO Nº	DESCRIPTION DESCRIPCION	5XB2	5XP2	5XR2	REMARKS OBSERVACIONES
1	4VP-E3610-00	REED VALVE ASSY VALVULA DE LAMINAS COMPLETA	1	1	1	
2	3XG-E3613-00	.REED, VALVE .VALVULA DE LAMINAS	2	2	2	
3	3XG-E3616-00	.STOPPER, REED VALVE .TOPE DE VALVULA DE LAMINAS	2	2	2	
4	97607-03206	.SCREW,WITH WASHER .TORNILLO CAB CON PLANA C/ARAN	4	4	4	
5	4SC-E3621-00	GASKET, VALVE SEAT JUNTA, DE VALV,DE EMPAQUE	1	1	1	
6	4WX-E3555-10	MANIFOLD, INTAKE CONECTOR	1	1	1	
7	91318-06020	BOLT TORNILLO	4	4	4	
8	3XG-E3575-01	BAND BANDA	1	1	1	
9	90467-24140	CLIP PRESILLA	1	1	1	
10	4VP-W1441-00	AIR CLEANER CASE COMP. CAJA COMPLETO FILTRO DE AIRE	1	1	1	
11	4VP-E4411-00	.CASE, AIR CLEANER 1 .CAJA FILTRO DEL AIRE 1	1	1	1	
12	4VP-E4437-00	.DUCT .CONDUCTO	1	1	1	
13	4VP-W1442-00	AIR CLEANER CASE COMP. ELEMENTO DE FILTRO DE AIRE	1	1	1	
14	4VP-E4412-00	.CAP, CLEANER CASE 1 .TAPA CAJA DEL FILTRO 1	1	1	1	
15	4VP-E4453-00	.JOINT, AIR CLEANER 1 .UNION DEL FILTRO DEL AIRE 1	1	1	1	
16	4VP-E4463-00	.JOINT, AIR CLEANER 2 .UNION DE FILTRO DE AIRE 2	1	1	1	
17	4VP-E4462-00	SEAL SELLO	1	1	1	
18	4VP-E4467-00	SEAL SELLO	1	1	1	
19	4VP-E4451-00	ELEMENT, AIR CLEANER ELEMENTO DEL FILTRO DEL AIRE	1	1	1	
20	4VP-E4452-00	SEAL SELLO	1	1	1	
21	97707-50125	SCREW, TAPPING TORNILLO ROSCA HEMBRA	4	4	4	
22	4VP-E443E-00	PIPE, DRAIN TUBO, DRENAJE	1	1	1	
23	90467-11823	CLIP PRESILLA	1	1	1	
24	97607-06220	SCREW,WITH WASHER TORNILLO CAB CON PLANA C/ARAN	1	1	1	
25	90387-068J5	COLLAR COLLAR	1	1	1	
26	90480-12497	GROMMET TAPON	1	1	1	
27	90460-41191	CLAMP, HOSE BRIDA, DE UNION	1	1	1	

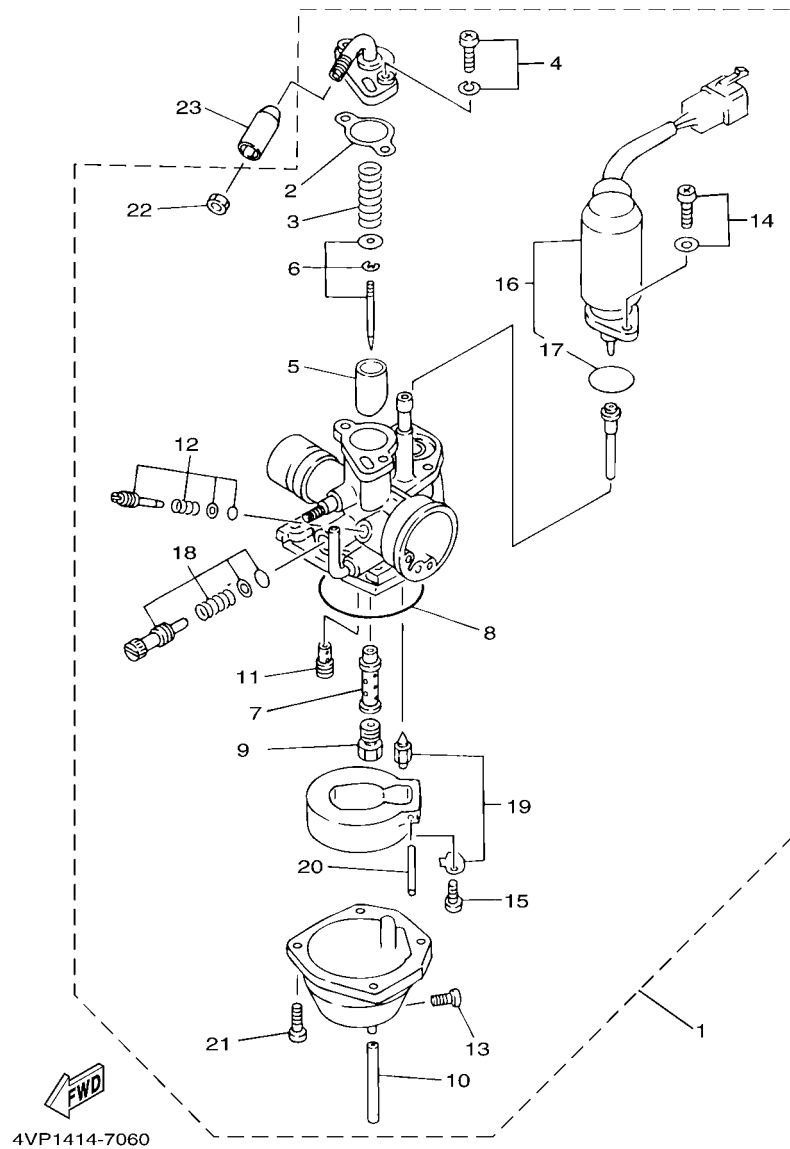


FIG. 6 CARBURETOR

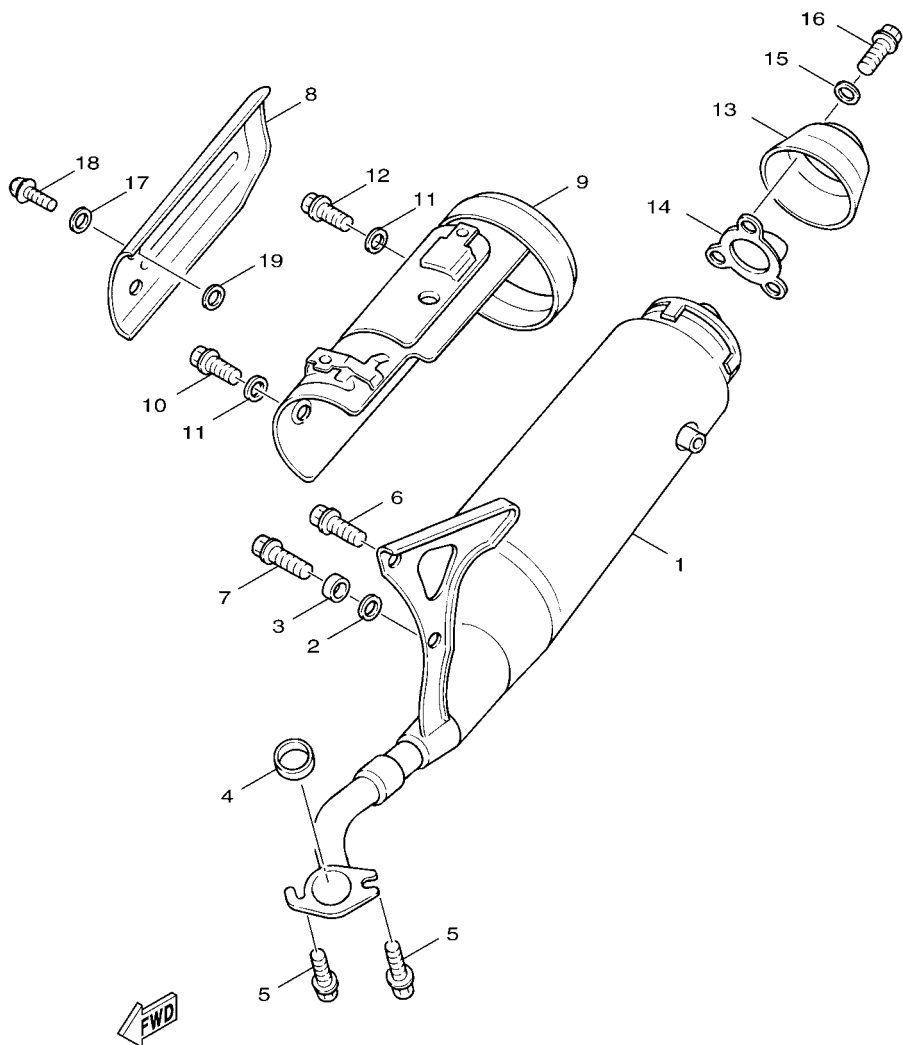
CARBURADOR

REF. NO.	PART NO. CODIGO Nº	DESCRIPTION DESCRIPCION	5XB2	5XP2	5XR2	REMARKS OBSERVACIONES
1	5JU-E4101-00	CARBURETOR ASSY 1 CARBURADOR COMPLETO 1	1	1	1	
2	3XG-14198-00	.GASKET .EMPAQUE	1	1	1	
3	52W-14131-00	.SPRING, THROTTLE VALVE .RESORTE VALVULA DE ACELERACION	1	1	1	
4	97607-04112	.SCREW, WITH WASHER .TORNILLO CAB CON PLANA C/ARAN	2	2	2	
5	4VP-14112-35	.VALVE, THROTTLE 1 .VALVULA DE ACELERACION 1	1	1	1	
6	4VP-1490J-00	.NEEDLE SET .CJTO. AGUJA	1	1	1	
7	4VP-14141-11	.NOZZLE, MAIN .BOQUILLA PRINCIPAL	1	1	1	
8	3XG-14997-00	.SEAL .SELLO	1	1	1	
9	18A-1414A-65	.JET, MAIN (# 72.5) .INYECTOR, PRINCIPAL (# 72.5)	1	1	1	
10	3XG-14196-00	.PIPE .TUBO DE DRENASE	1	1	1	
11	193-14142-35	.JET, PILOT (#35) .SURTIADOR DE RALENTI (# 35)	1	1	1	
12	3MB-14104-00	.AIR SCREW SET .CJTO. TORNILLO DE AIRE	1	1	1	
13	4KP-14191-00	.PLUG, DRAIN .TORNILLO, DE DRENAJE	1	1	1	
14	97607-04108	.SCREW, WITH WASHER .TORNILLO CAB CON PLANA C/ARAN	2	2	2	
15	98507-03006	.SCREW, PAN HEAD .TORNILLO DE CABEZA PLANA	1	1	1	
16	4VP-14171-00	.PLUNGER, STARTER .EMBOLO DE ARRANQUE	1	1	1	
17	52W-14147-00	.O-RING .ANILLO O	1	1	1	
18	4UF-14103-00	.THROTTLE SCREW SET .CJTO. TORNILLO DEL RALENTI	1	1	1	
19	3XG-14107-00	.NEEDLE VALVE SET .VALVULA DE AGUJA	1	1	1	
20	53L-14186-00	.PIN, FLOAT .PASADOR DE LA BOYA	1	1	1	
21	98507-04012	.SCREW, PAN HEAD .TORNILLO DE CABEZA PLANA	4	4	4	
22	522-14161-00	.NUT, CABLE ADJUSTING .TUERCA AJUSTADOR DE CABLE	1	1	1	
23	1MH-F6329-00	CAP, RUBBER TAPA DE ANILLO PROTECTOR	1	1	1	

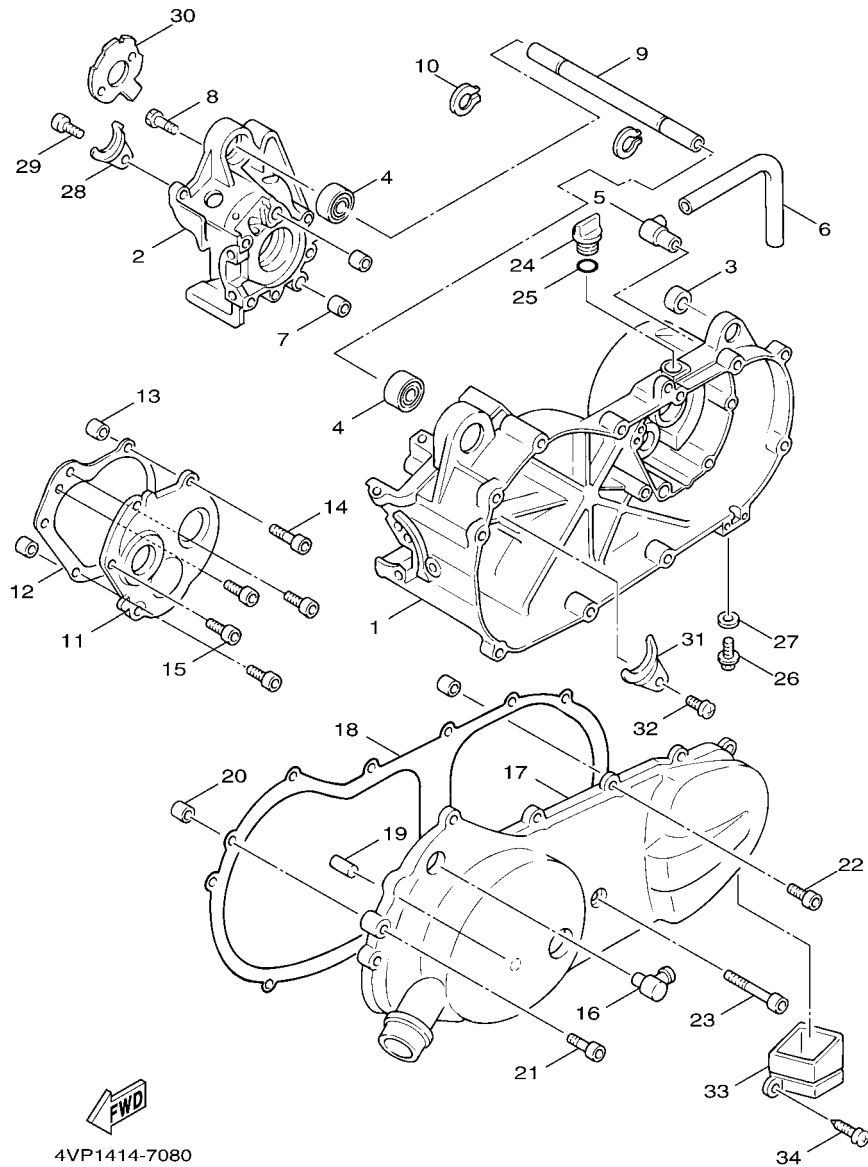
FIG. 7 EXHAUST

DESCARGA

REF. NO.	PART NO. CODIGO Nº	DESCRIPTION DESCRIPCION	5XB2	5XP2	5XR2	REMARKS OBSERVACIONES
1	5JU-E4610-00-98	EXHAUST PIPE ASSY 1 TUBO DE ESCAPE COMPLETO 1	1	1	1	LGB LGB
2	4VP-E4445-00	GROMMET TAPON PROTECTOR	1	1	1	
3	4VP-E4779-00	COLLAR COLLAR	1	1	1	
4	3NT-E4613-01	GASKET, EXHAUST PIPE JUNTA, TUBO DE ESCAPE	1	1	1	
5	90153-06800	SCREW, HEXAGON TORNILLO HEXAGONAL	2	2	2	
6	95817-08020	BOLT, FLANGE TUERCA DE REBORDE	1	1	1	
7	95817-08030	BOLT, FLANGE TUERCA DE REBORDE	1	1	1	
8	4VP-E4718-00	PROTECTOR, MUFFLER 1 PROTECTOR DE SILENCIADOR 1	1		1	
	5JU-E4718-00	PROTECTOR, MUFFLER 1 PROTECTOR DE SILENCIADOR 1		1		
9	4VP-E4627-10	EXT.COVER ASSY PROTECTOR DE SILENCIADO	1	1	1	
10	97017-06010	BOLT PERNO	2	2	2	
11	4CW-E4766-00	WASHER, PROTECTOR ARANDELA DE PROTECTOR	4	4	4	
12	97517-06510	BOLT, WITH WASHER PERNO CON ARANDELA	3	3	3	
13	4VP-E4799-20	CAP TAPA	1	1	1	
14	4VP-E475M-00	PIPE TUBO	1	1	1	
15	92907-06200	WASHER ARANDELA	3	3	3	
16	90176-06065	NUT, CROWN TUERCA CORONA	3	3	3	
17	4CW-E4766-00	WASHER, PROTECTOR ARANDELA DE PROTECTOR	3	3	3	
18	98980-06010	SCREW, BIND TORNILLO DE LIGAR	3	3	3	
19	3XY-E4766-00	WASHER, PROTECTOR ARANDELA DE PROTECTOR	3	3	3	



4VPB300-9070

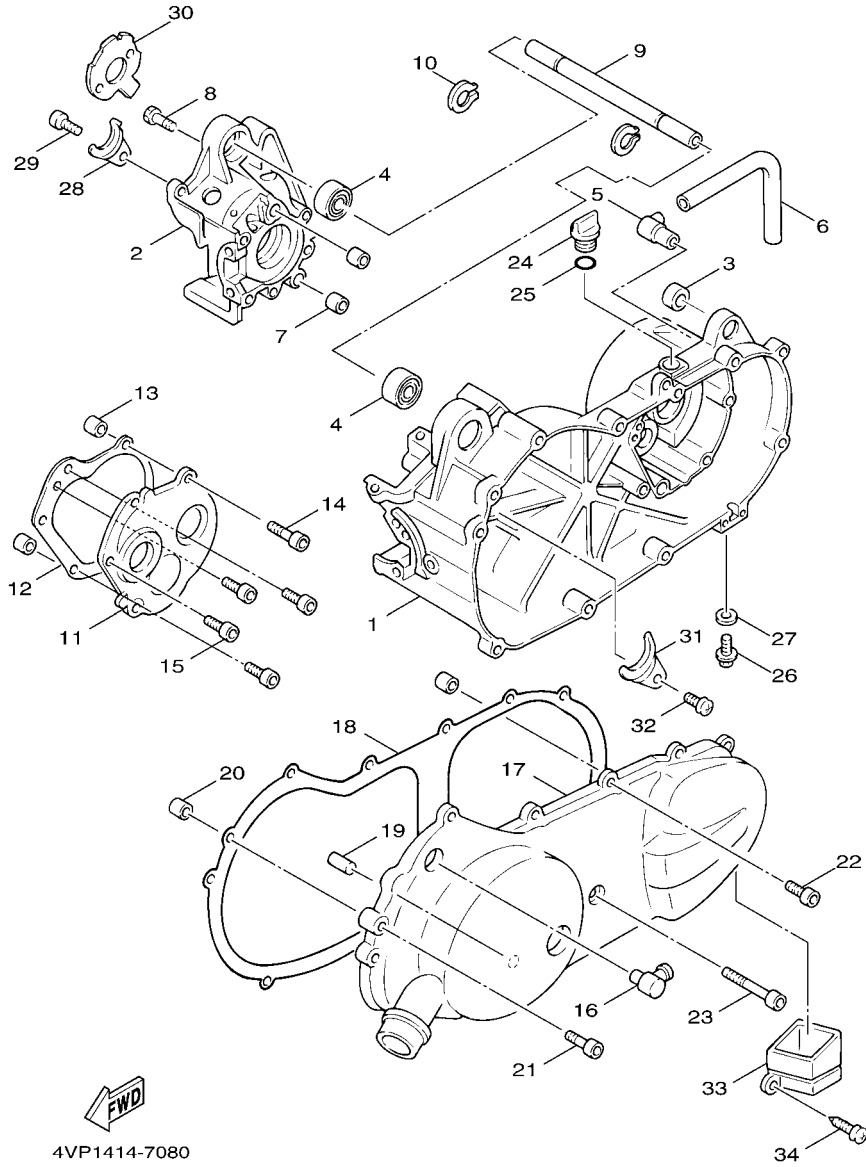


4VP1414-7080

FIG. 8 CRANKCASE

CARTER

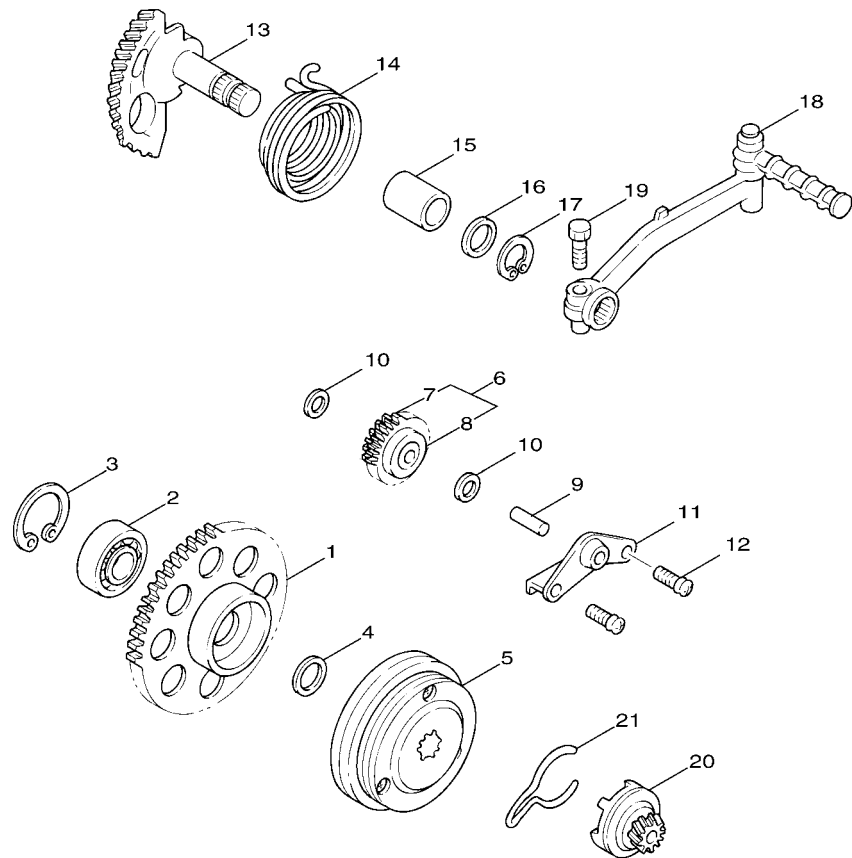
REF. NO.	PART NO. CODIGO Nº	DESCRIPTION DESCRIPCION	5XB2	5XP2	5XR2	REMARKS OBSERVACIONES
1	5FA-E5111-12	CRANKCASE 1 CARTER MANIVELA 1	1	1	1	
2	4VP-E5121-00	CRANKCASE 2 CARTER MANIVELA 2	1	1	1	
3	4X6-F2216-00	BUSH, REAR SHOCK ABSORBER BUJE DEL AMORTIGUADOR TRASERO	1	1	1	
4	93306-003Y4	BEARING COJINETE	2	2	2	
5	3XG-E5371-00	BREATHER RESPIRADERO	1	1	1	
6	4VP-E5373-00	PIPE, BREATHER MANGUELA DE RESPIRADERO	1	1	1	
7	91812-16805	PIN, DOWEL PASADOR DE CLAVIJA	2	2	2	
8	91318-06035	BOLT TORNILLO	6	6	6	
9	3XG-E5317-00	SPACER, ENGINE MOUNT SEPARADPR, MONTANTE DE MOTOR	1	1	1	
10	99009-17400	CIRCLIP PRESILLA REDONDA	2	2	2	
11	4VP-E5421-00	COVER, CRANKCASE 2 TAPA DE CARTER DERECHA	1	1	1	
12	5DA-E5461-00	GASKET, CRANKCASE COVER 2 JUNTA TAPA CARTER DRCHO	1	1	1	
13	91810-14807	PIN, DOWEL PASADOR DE CLAVIJA	2	2	2	
14	91318-06035	BOLT TORNILLO	2	2	2	
15	91318-06020	BOLT TORNILLO	4	4	4	
16	4VP-E5439-00	PLUG, BLIND TAPON CIEGO	1	1	1	
17	4VP-E5411-00-33	COVER, CRANKCASE 1 CUBIERTA DE CARTER 1	1	1	1	YB YB
18	5DA-E5451-00	GASKET, CRANKCASE COVER 1 EMPAQ DE CUBIERTA DE CARTER	1	1	1	
19	4VP-E5659-00	SHAFT EJE	1	1	1	
20	91810-14807	PIN, DOWEL PASADOR DE CLAVIJA	2	2	2	
21	91317-06025	BOLT PERNO	9	9	9	
22	91317-06035	BOLT PERNO	2	2	2	
23	91317-06045	BOLT PERNO	1	1	1	
24	4Y4-E5363-00	PLUG, OIL TAPON DE ACEITE	1	1	1	
25	93210-14805	O-RING ANILLO O	1	1	1	
26	95807-08016	BOLT, FLANGE TUERCA DE REBORDE	1	1	1	
27	90430-08119	GASKET JUNTA	1	1	1	



4VP1414-7080

FIG. 8 CRANKCASE CARTER

REF. NO.	PART NO. CODIGO Nº	DESCRIPTION DESCRIPCION	5XB2	5XP2	5XR2	REMARKS OBSERVACIONES
28	4VP-E5128-00	HOLDER SOPORTE	1	1	1	
29	98507-06012	SCREW, PAN HEAD TORNILLO DE CABEZA PLANA	1	1	1	
30	4SC-E5462-00	GASKET, CRANKCASE COVER 3 EMPAQ CUBIERTA DE CARTER 3	1	1	1	
31	4VP-E5118-00	HOLDER SOPORTE	1	1	1	
32	98507-06012	SCREW, PAN HEAD TORNILLO DE CABEZA PLANA	1	1	1	
33	4VP-E5477-00	DUCT, AIR CONDCTO DE AIRE	1	1	1	
34	97607-06220	SCREW,WITH WASHER TORNILLO CAB CON PLANA C/ARAN	2	2	2	

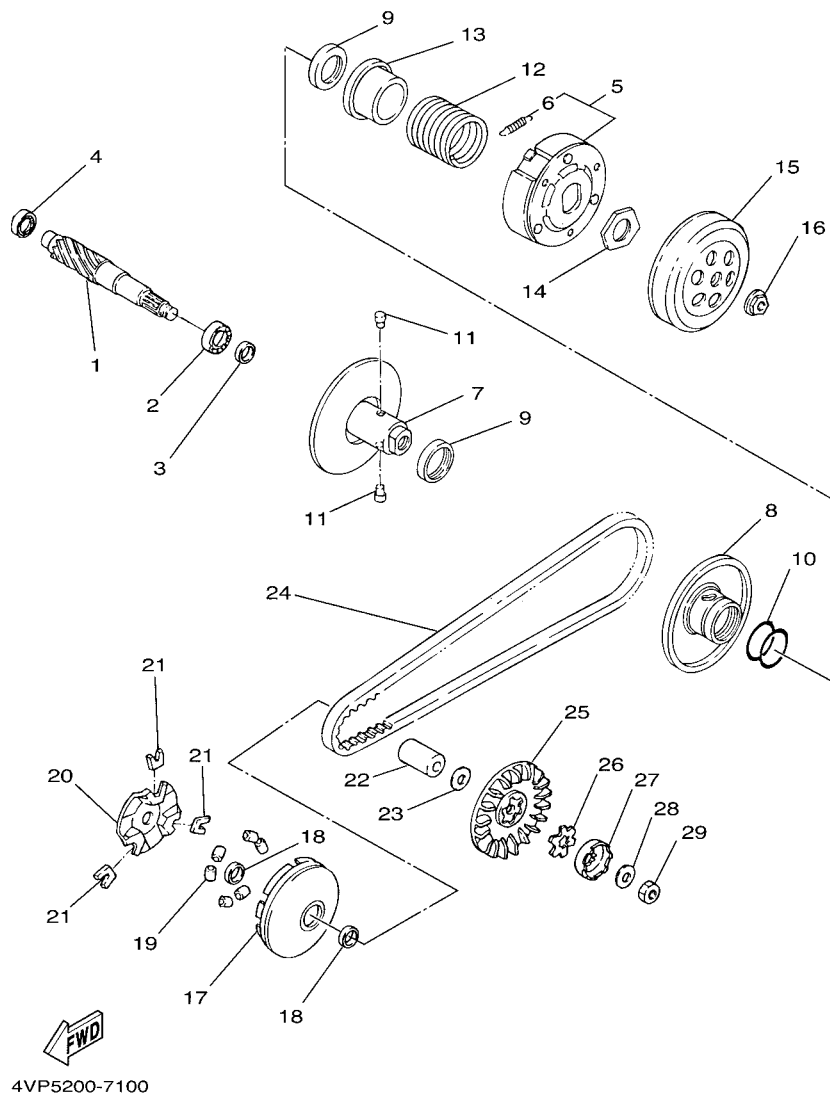



4VP1414-7090

FIG. 9 STARTER

ARRANQUE

REF. NO.	PART NO. CODIGO Nº	DESCRIPTION DESCRIPCION	5XB2	5XP2	5XR2	REMARKS OBSERVACIONES
1	4VP-E5524-00	WHEEL, STARTER RUEDA DE ARRANQUE	1	1	1	
2	93306-003Y4	BEARING COJINETE	1	1	1	
3	93450-35015	CIRCLIP SEGURO	1	1	1	
4	90201-163G6	WASHER, PLATE ARANDELA PLANA	1	1	1	
5	4CW-E5570-00	STARTER CLUTCH ASSY EMBRAGUE DEL ARRANQUE COMPLETA	1	1	1	
6	4VP-E5650-00	IDLE GEAR ASSY ENGRENAJE NEUTRO COMPLETO	1	1	1	
7	4VP-E5512-00	.GEAR, IDLER 1 .ENGRENAJE NEUTRO	1	1	1	
8	93315-108Y4	.BEARING .COJINETE DE RODILLOS	1	1	1	
9	3XG-E3342-00	SHAFT, IDLE GEAR EJE DE ENGRENAGE NEUTRO	1	1	1	
10	90201-08088	WASHER, PLATE ARANDELA PLANA	2	2	2	
11	3XG-E5532-00	PLATE, IDLE GEAR PLACA DE ENGRENAGE NEUTRO	1	1	1	
12	98507-06012	SCREW, PAN HEAD TORNILLO DE CABEZA PLANA	2	2	2	
13	4VP-E5601-00	KICK SHAFT ASSY EJE DE ARR. DE PIE COMPL	1	1	1	
14	90508-32768	SPRING, TORSION RESORTE DE TORSION	1	1	1	
15	90380-15817	BUSH, SOLID CASQUILLO SOLIDO	1	1	1	
16	90201-155G5	WASHER, PLATE ARANDELA PLANA	1	1	1	
17	99009-15400	CIRCLIP PRESILLA REDONDA	1	1	1	
18	5FA-E5620-00	KICK CRANK ASSY MANIVELA DE PEDAL COMPLETA	1	1	1	
19	97017-06025	BOLT PERNO	1	1	1	
20	4VP-E5630-00	KICK PINION ASSY PINON DE PEDAL COMPLETA	1	1	1	
21	4VP-E5673-00	CLIP PRESILLA	1	1	1	



4VP5200-7100

FIG. 10 CLUTCH

EMBRAGUE

REF. NO.	PART NO. CODIGO Nº	DESCRIPTION DESCRIPCION	5XB2	5XP2	5XR2	REMARKS OBSERVACIONES
1	4VP-E6111-00	GEAR, PRIMARY DRIVE ENGRANAJE TRACC.PRIMARIA	1	1	1	
2	93306-203YE	BEARING COJINETE	1	1	1	
3	93102-17467	OIL SEAL SELLO ACEITE	1	1	1	
4	93306-200Y1	BEARING COJINETE	1	1	1	
5	3XY-E6620-01	CLUTCH CARRIER ASSY PORTADOR DE EMBRAGUE COMPLETO	1	1	1	
6	3UH-E6626-00	.SPRING, CLUTCH WEIGHT 1 .RESORTE CONTRAPESO EMBRAGUE	3	3	3	
7	4VP-E7660-01	SECONDARY FIXED SHEAVE COMP. ROLDANA SECUNDARIA FIJA COMPL.	1	1	1	
8	4VP-E7670-01	SECONDARY SLIDING SHEAVE ROLDANA SECUNDARIA CORREDIZA	1	1	1	
9	93104-33800	OIL SEAL SELLO ACEITE	2	2	2	
10	93210-368G9	O-RING ANILLO O	2	2	2	
11	4DM-E7664-00	PIN, GUIDE PASADOR DE GUIA	2	2	2	
12	90501-430K3	SPRING, COMPRESSION RESORTE DE COMPRESION	1	1	1	
13	4DM-E7684-00	SEAT, SECONDARY SPRING ASIENTO DE RESORTE SECUNDARIO	1	1	1	
14	90179-28415	NUT TUERCA	1	1	1	
15	4VP-E6611-00	CLUTCH HOUSING COMP. CAJA DE EMBRAGUE COMPLETO	1	1	1	
16	90179-10609	NUT TUERCA	1	1	1	
17	4VP-E7620-00	PRIMARY SLIDING SHEAVE COMP. ROLDANA PRIMARIA MOVIL	1	1	1	
18	93101-21801	OIL SEAL SELLO ACEITE	2	2	2	
19	4KX-17632-00	WEIGHT CONTRAPESO	6	6	6	
20	4VP-E7623-00	CAM LEVA	1	1	1	
21	4CW-E7653-00	SLIDER CORREDERA	3	3	3	
22	90387-168N7	COLLAR COLLAR	1	1	1	
23	90201-16800	WASHER, PLATE ARANDELA PLANA	1	1	1	
24	4VP-17641-00	V-BELT CORREA EN V	1	1	1	
25	4VP-E7611-00	SHEAVE, PRIMARY FIXED PISCO FIXADOR DE POREA	1	1	1	
26	90209-14800	WASHER ARANDELA DE SEPARACION	1	1	1	
27	14T-15657-00	CLUTCH, ONEWAY EMBRAQUE SIN RETORNO	1	1	1	

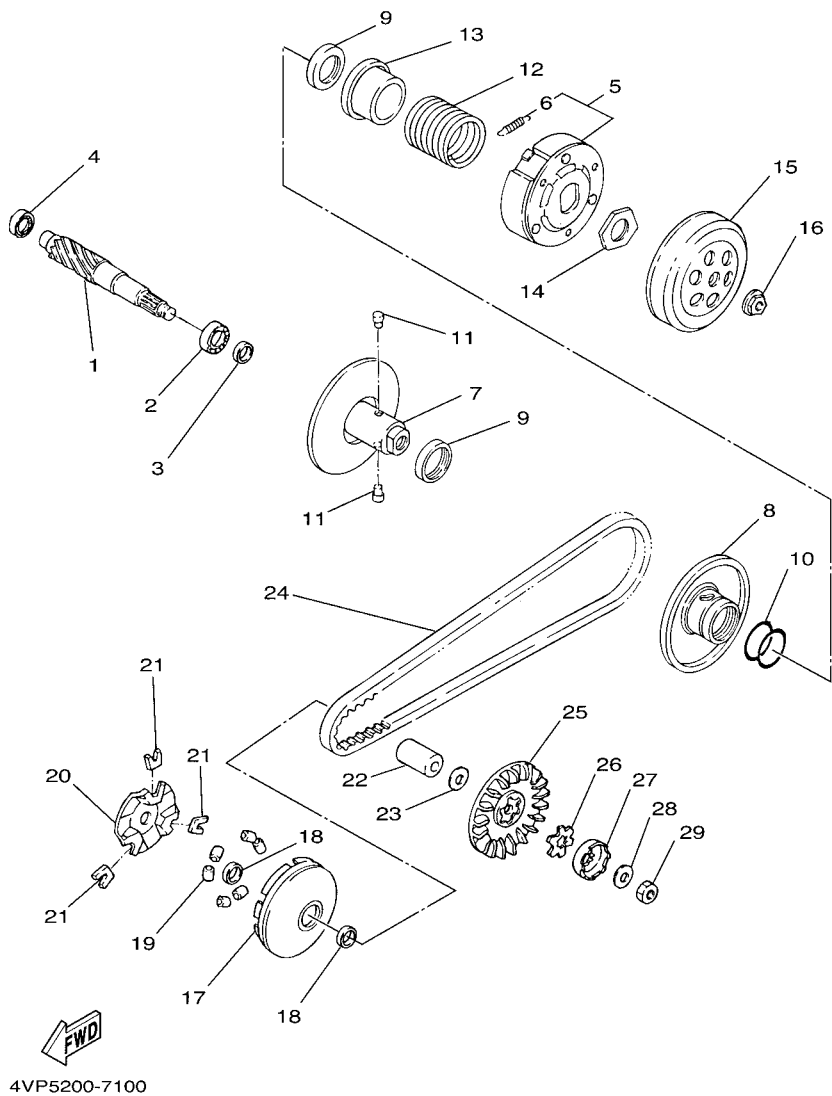
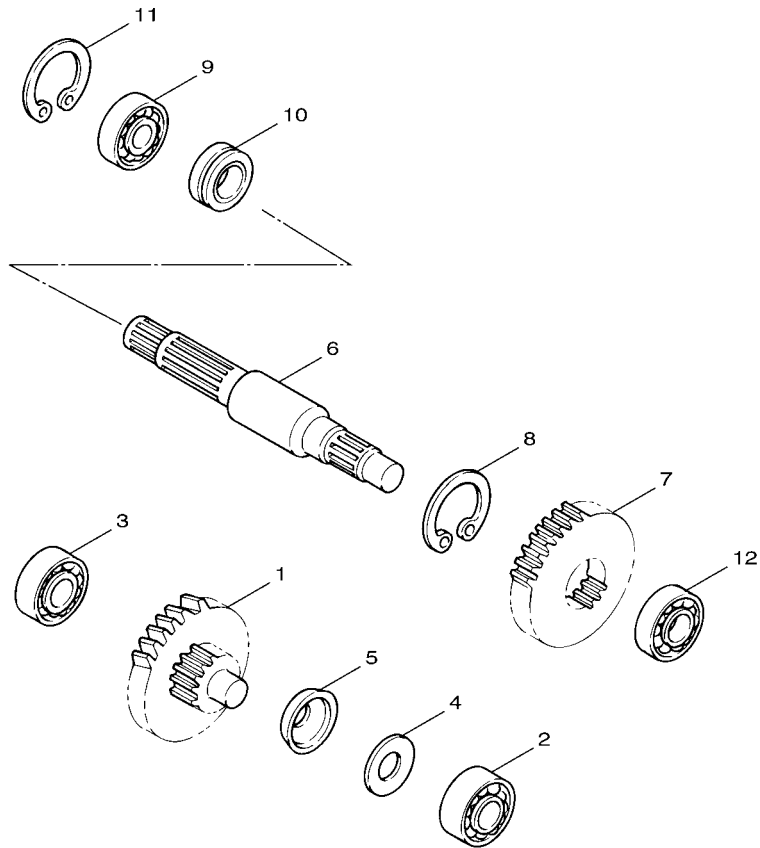


FIG. 10 CLUTCH

EMBRAGUE

REF. NO.	PART NO. CODIGO Nº	DESCRIPTION DESCRIPCION	5XB2	5XP2	5XR2	REMARKS OBSERVACIONES
28	90208-12050	WASHER, CONICAL SPRING ARANDELA DE RESORTE CONICO	1	1	1	
29	95307-12700	NUT TUERCA	1	1	1	




 4VP1414-7110

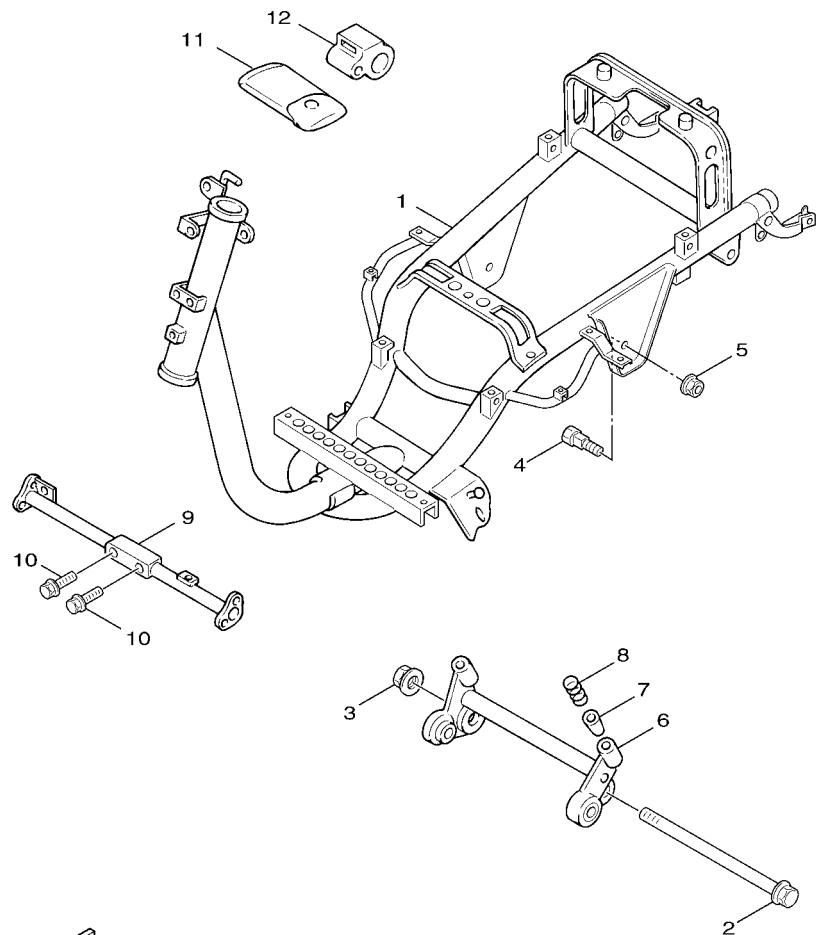
FIG. 11 TRANSMISION

TRANSMISION

REF. NO.	PART NO. CODIGO Nº	DESCRIPTION DESCRIPCION	5XB2	5XP2	5XR2	REMARKS OBSERVACIONES
1	4VP-E7410-00	MAIN AXLE COMP. EJE PRINCIPAL COMPLETO	1	1	1	
2	93311-315Y2	BEARING COJINETE DE RODILLOS	1	1	1	
3	93306-200Y1	BEARING COJINETE	1	1	1	
4	90201-158K9	WASHER, PLATE ARANDELA PLANA	1	1	1	
5	90208-15807	WASHER, CONICAL SPRING ARANDELA DE RESORTE CONICO	1	1	1	
6	4VP-E7421-00	AXLE, DRIVE EJE SECUNDARIO	1	1	1	
7	4VP-E7211-00	GEAR, 1ST WHEEL ENGRANAJE RUEDA DE 1 RA	1	1	1	
8	93410-20823	CIRCLIP SEGURO	1	1	1	
9	93306-004X7	BEARING COJINETE	1	1	1	
10	93102-25270	OIL SEAL SELLO ACEITE	1	1	1	
11	99009-42500	CIRCLIP PRESILLA REDONDA	1	1	1	
12	93306-203YE	BEARING COJINETE	1	1	1	

FIG. 12 FRAME

CUADRO



1S52200-D120

REF. NO.	PART NO. CODIGO Nº	DESCRIPTION DESCRIPCION	5XB2	5XP2	5XR2	REMARKS OBSERVACIONES
1	5XB-F1110-00-33	FRAME COMP. ARMAZON COMPLETO	1			YB
	5XP-F1110-01-33	FRAME COMP. ARMAZON COMPLETO		1		YB
	5XR-F1110-00-33	FRAME COMP. ARMAZON COMPLETO			1	YB
2	3XG-F1481-00	BOLT, ENGINE MOUNTING 1 PERNO DE MONTAJE DE MOTOR 1	1	1	1	YB
3	95607-12200	NUT, SELF-LOCKING TUERCA DE AUTO-CIERRE	1	1	1	
4	4Y4-F1481-00	BOLT, ENGINE MOUNTING 1 PERNO DE MONTAJE DE MOTOR 1	2	2	2	
5	90185-10801	NUT, SELF-LOCKING TUERCA AUTOBLOCANTE	2	2	2	
6	4VP-F1410-10	ENGINE BRACKET COMP. SOPORTE DE MOTOR COMPLETO	1	1	1	
7	4Y4-F139X-01	DAMPER AMORTIGUADOR	1	1	1	
8	90501-29517	SPRING, COMPRESSION RESORTE DE COMPRESION	1	1	1	
9	4VP-F1514-00	STAY, FENDER 2 SOPORTE DE GUARDABARRO 2	1	1	1	
10	95807-08035	BOLT, FLANGE TUERCA DE REBORDE	2	2	2	
11	45U-F8100-00	TOOL KIT JUEGO DE HERRAMIENTAS	1	1		
	5JU-F8100-01	TOOL KIT JUEGO DE HERRAMIENTAS		1		
	3TL-F8111-00	BAG TORNILLO		1		
12	23Y-F8175-00	HOLDER, TOOL SOSTEN DE HERRAMIENTAS	1		1	

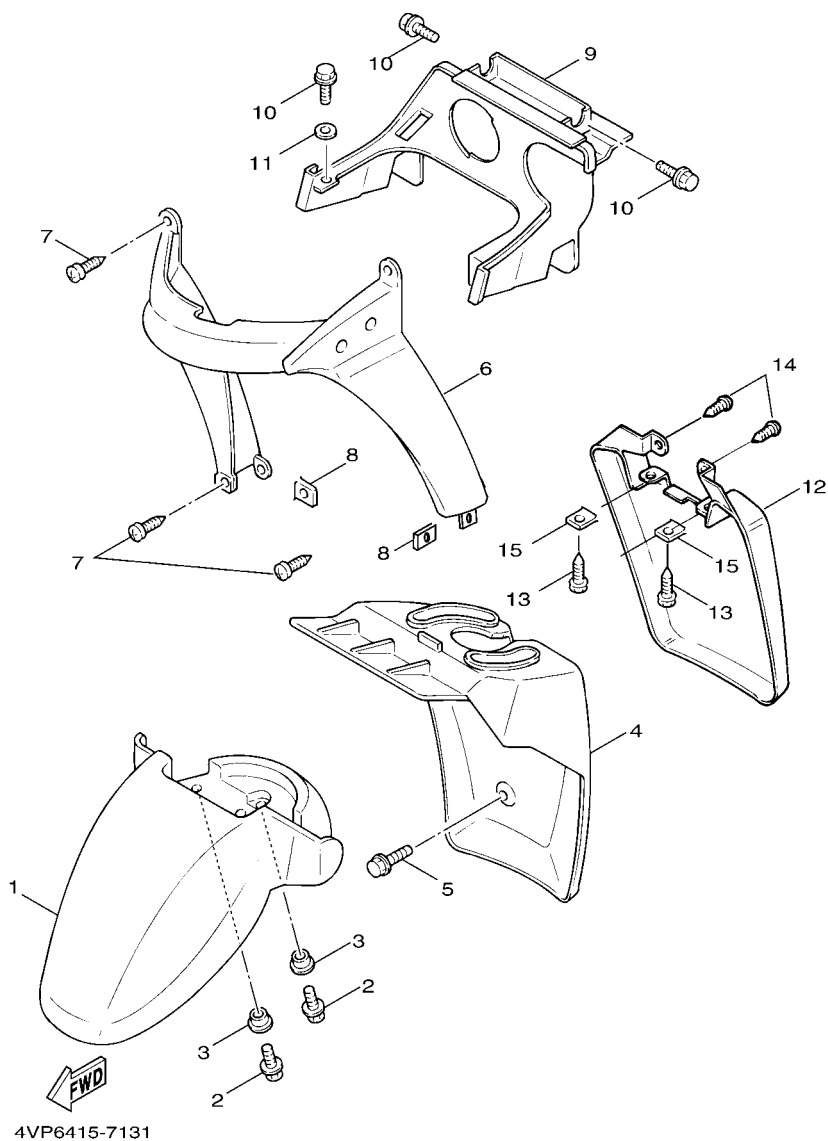


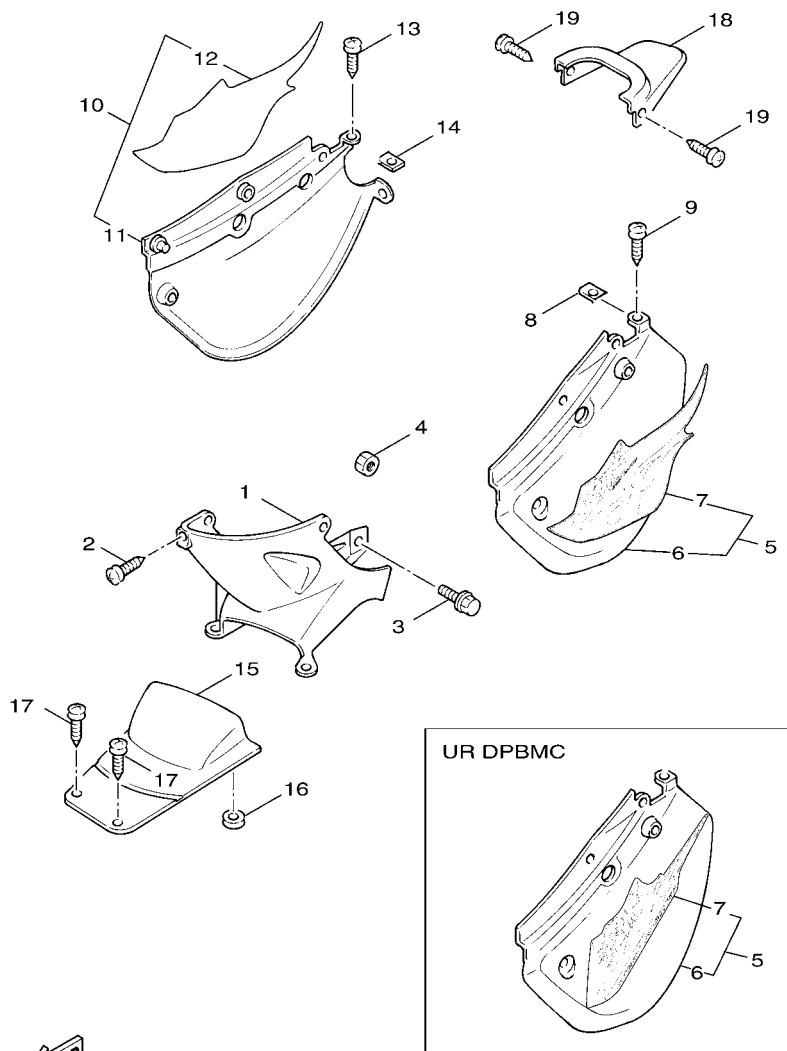
FIG. 13 FENDER

GUARDABARRO

REF. NO.	PART NO. CODIGO Nº	DESCRIPTION DESCRIPCION	5XB2	5XP2	5XR2	REMARKS OBSERVACIONES
1	4VP-F1511-01	FENDER, FRONT GUARDABARRO DELANTERO	1	1	1	UR SMX/STDS/VRS5 UR SMX/STDS/VRS5
	4VP-F1511-71	FENDER, FRONT GUARDABARRO DELANTERO	1	1	1	UR DPBMC UR DPBMC
2	90119-06821	BOLT, WITH WASHER TORNILLO CON ARANDELA	3	3	3	
3	90387-068F8	COLLAR COLLAR	3	3	3	
4	4VP-F1552-00	FENDER, INNER GUARDABARRO	1	1	1	
5	95807-06012	BOLT, FLANGE TUERCA DE REBORDE	2	2	2	
6	4VP-F1519-01	MOLE, FENDER MUELLE DE GUARDABARRO	1	1	1	UR SMX/STDS/VRS5 UR SMX/STDS/VRS5
	4VP-F1519-41	MOLE, FENDER MUELLE DE GUARDABARRO	1	1	1	UR DPBMC UR DPBMC
7	97707-50016	SCREW, TAPPING TORNILLO ROSCA HEMBRA	4	4	4	
8	90183-05807	NUT, SPRING TUERCA DE RESORTE	2	2	2	
9	4VP-F1629-00	GUARD, MUD GUARDABARRO INFERIOR	1	1	1	
10	95807-06012	BOLT, FLANGE TUERCA DE REBORDE	4	4	4	
11	90201-06380	WASHER, PLATE ARANDELA PLANA	2	2	2	
12	4VP-F1691-01	FLAP CHARNELA	1	1	1	
13	97707-50012	SCREW, TAPPING TORNILLO ROSCA HEMBRA	2	2	2	
14	97707-50016	SCREW, TAPPING TORNILLO ROSCA HEMBRA	2	2	2	
15	90183-05807	NUT, SPRING TUERCA DE RESORTE	2	2	2	

FIG. 14 SIDE COVER

CUBIERTA LATERAL



5XB2200-D140

REF. NO.	PART NO. CODIGO Nº	DESCRIPTION DESCRIPCION	5XB2	5XP2	5XR2	REMARKS OBSERVACIONES	
1	4VP-F1711-00	COVER, SIDE 1 CUBIERTA LATERAL 1	1	1	1		
2	97707-50012	SCREW, TAPPING TORNILLO ROSCA HEMBRA	3	3	3		
3	90159-06822	SCREW, WITH WASHER TORNILLO CON VALONA	2	2	2		
4	2GF-F1535-00	NUT 1 TUERCA 1	2	2	2		
5	4VP-X2172-B0-P0	COVER, SIDE 2 TAPA LTERAL 2	1		1	UR DPBMC UR DPBMC	
---	4VP-X2172-10-P8	COVER, SIDE 2 TAPA LTERAL 2	1		1	UR SMX UR SMX	
	4VP-X2172-20-WL	COVER, SIDE 2 TAPA LTERAL 2	1		1	UR STDS UR STDS	
	4VP-X2172-00-PA	COVER, SIDE 2 TAPA LTERAL 2	1		1	UR VRS5 UR VRS5	
6	5XP-F1721-00-P0	COVER, SIDE 2 CUBIERTA LATERAL 2		1		UR DPBMC UR DPBMC	
	5XP-F1721-00-P1	COVER, SIDE 2 CUBIERTA LATERAL 2		1		UR SMX UR SMX	
---	5XP-F1721-00-P2	COVER, SIDE 2 CUBIERTA LATERAL 2		1		UR VRS5 UR VRS5	
	5XP-F1721-00-WL	COVER, SIDE 2 CUBIERTA LATERAL 2		1		UR STDS UR STDS	
7	5PN-F179J-00	.GRAPHIC,7	1		1	UR DPBMC UR DPBMC	
	5PN-F179L-00	.GRAPHIC 9 .CALCOMANIA DE BOVEDA 9	1		1	UR SMX UR SMX	
	5PN-F179L-20	.GRAPHIC 9 .CALCOMANIA DE BOVEDA 9	1		1	UR STDS UR STDS	
---	5PN-F179L-30	.GRAPHIC 9 .CALCOMANIA DE BOVEDA 9	1		1	UR VRS5 UR VRS5	
	5XP-F179J-00	GRAPHIC,7 GRAPHIC,7		1		UR DPBMC UR DPBMC	
	5XP-F179L-00	GRAPHIC 9 CALCOMANIA DE BOVEDA 9		1		UR SMX UR SMX	
	5XP-F179L-10	GRAPHIC 9 CALCOMANIA DE BOVEDA 9		1		UR STDS UR STDS	
	5XP-F179L-20	GRAPHIC 9 CALCOMANIA DE BOVEDA 9		1		UR VRS5 UR VRS5	
---	8	90183-05807	NUT, SPRING TUERCA DE RESORTE	1	1	1	
9	97707-50012	SCREW, TAPPING TORNILLO ROSCA HEMBRA	3	3	3		
10	4VP-X2173-B0-P0	COVER, SIDE 3 TAPA LATERAL 3	1		1	UR DPBMC UR DPBMC	
	4VP-X2173-10-P8	COVER, SIDE 3 TAPA LATERAL 3	1		1	UR SMX UR SMX	
	4VP-X2173-20-WL	COVER, SIDE 3 TAPA LATERAL 3	1		1	UR STDS UR STDS	
---	4VP-X2173-00-PA	COVER, SIDE 3 TAPA LATERAL 3	1		1	UR VRS5 UR VRS5	
11	5XP-F1731-00-P0	COVER, SIDE 3 TAPA LATERAL 3		1		UR DPBMC UR DPBMC	



5XB2200-D140

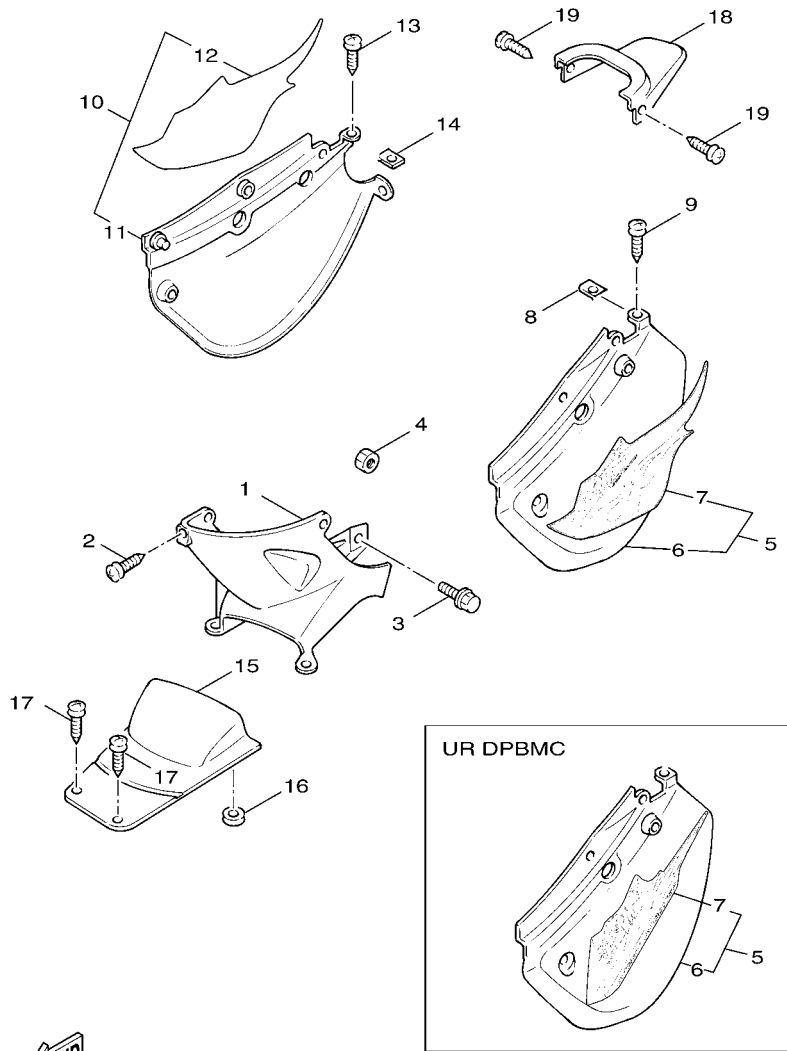


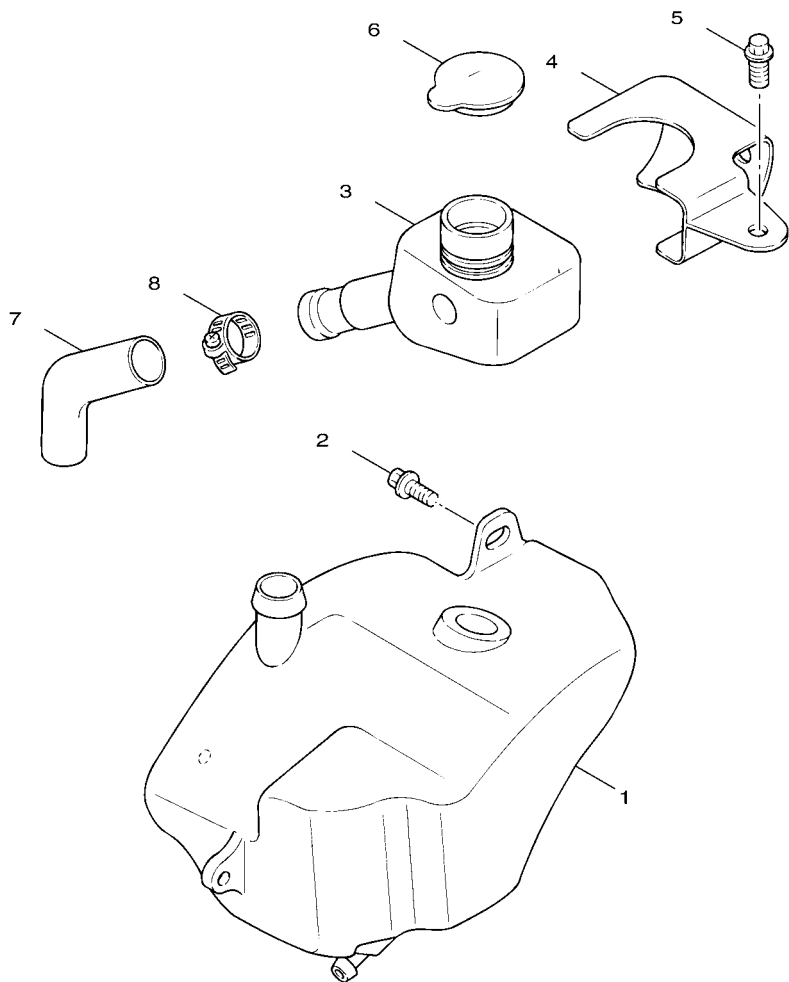
FIG. 14 SIDE COVER

CUBIERTA LATERAL

REF. NO.	PART NO. CODIGO Nº	DESCRIPTION DESCRIPCION	5XB2	5XP2	5XR2	REMARKS OBSERVACIONES
11	5XP-F1731-00-P1	COVER, SIDE 3 TAPA LATERAL 3		1		UR SMX UR SMX
	5XP-F1731-00-P2	COVER, SIDE 3 TAPA LATERAL 3		1		UR VRS5 UR VRS5
	5XP-F1731-00-WL	COVER, SIDE 3 TAPA LATERAL 3		1		UR STDS UR STDS
12	5PN-F179K-00	.GRAPHIC,8 .GRAPHIC,8	1		1	UR DPBMC UR DPBMC
	5PN-F179M-00	.GRAPHIC 10 .CALCOMANIA DE BOVEDA 10	1		1	UR SMX UR SMX
	5PN-F179M-20	.GRAPHIC 10 .CALCOMANIA DE BOVEDA 10	1		1	UR STDS UR STDS
	5PN-F179M-30	.GRAPHIC 10 .CALCOMANIA DE BOVEDA 10	1		1	UR VRS5 UR VRS5
	5XP-F179K-00	GRAPHIC,8 GRAPHIC,8		1		UR DPBMC UR DPBMC
	5XP-F179M-00	GRAPHIC 10 CALCOMANIA DE BOVEDA 10		1		UR SMX UR SMX
	5XP-F179M-10	GRAPHIC 10 CALCOMANIA DE BOVEDA 10		1		UR STDS UR STDS
	5XP-F179M-20	GRAPHIC 10 CALCOMANIA DE BOVEDA 10		1		UR VRS5 UR VRS5
13	97707-50012	SCREW, TAPPING TORNILLO ROSCA HEMBRA	3	3	3	
14	90183-05807	NUT, SPRING TUERCA DE RESORTE	1	1	1	
15	4VP-F1741-00	COVER, SIDE 4 CUBIERTA LATERAL 4	1	1	1	
16	90480-16278	GROMMET TAPON	1	1	1	
17	97707-50012	SCREW, TAPPING TORNILLO ROSCA HEMBRA	2	2	2	
18	4VP-F171E-00-P0	COVER, SIDE 5 CUBIERTA LATERAL 5	1		1	UR DPBMC UR DPBMC
	4VP-F171E-00-P8	COVER, SIDE 5 CUBIERTA LATERAL 5	1		1	UR SMX UR SMX
	4VP-F171E-00-PA	COVER, SIDE 5 CUBIERTA LATERAL 5	1		1	UR VRS5 UR VRS5
	4VP-F171E-00-WL	COVER, SIDE 5 CUBIERTA LATERAL 5	1		1	UR STDS UR STDS
	5XP-F171E-00-P0	COVER, SIDE 5 CUBIERTA LATERAL 5		1		UR DPBMC UR DPBMC
	5XP-F171E-00-P1	COVER, SIDE 5 CUBIERTA LATERAL 5		1		UR SMX UR SMX
	5XP-F171E-00-P2	COVER, SIDE 5 CUBIERTA LATERAL 5		1		UR VRS5 UR VRS5
	5XP-F171E-00-WL	COVER, SIDE 5 CUBIERTA LATERAL 5		1		UR STDS UR STDS
19	97707-50012	SCREW, TAPPING TORNILLO ROSCA HEMBRA	2	2	2	

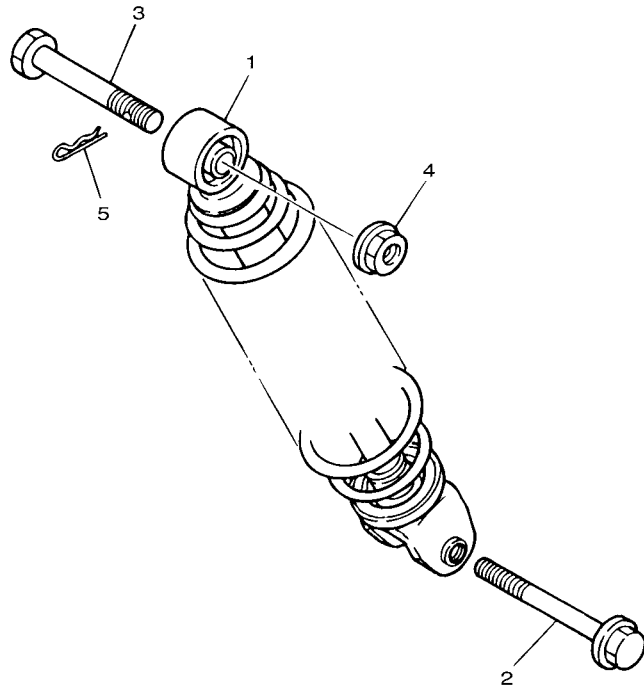
FIG. 15 OIL TANK

DEPOSITO DE ACEITE



 4VP1414-7170

REF. NO.	PART NO. CODIGO Nº	DESCRIPTION DESCRIPCION	5XB2	5XP2	5XR2	REMARKS OBSERVACIONES
1	4VP-F1751-00	TANK, OIL DEPOSITO DE ACEITE	1		1	
	5JU-F1751-00	TANK, OIL DEPOSITO DE ACEITE		1		
2	90119-06802	BOLT, WITH WASHER TORNILLO CON ARANDELA	2	2	2	
3	4VP-F1733-00	SUB TANK, OIL SUBDEPOSITO DE ACEITE	1		1	
	5JU-F1733-00	SUB TANK, OIL SUBDEPOSITO DE ACEITE		1		
4	4VP-F1734-00	HOLDER, OIL SUB TANK SOSTEN SUBDEP.DE ACEITE	1	1	1	
5	97507-05510	BOLT, WITH WASHER PERNO CON ARANDELA	1	1	1	
6	4X6-F1771-02	BODY, CAP TAPON DEPOSITO ACEITE	1	1	1	
7	4VP-F1745-00	PIPE, OIL TANK BREATHER TUBO RESP.DEP.DE ACEITE	1	1	1	
8	90460-27815	CLAMP, HOSE BRIDA, DE UNION	2	2	2	



3XG4414-4160

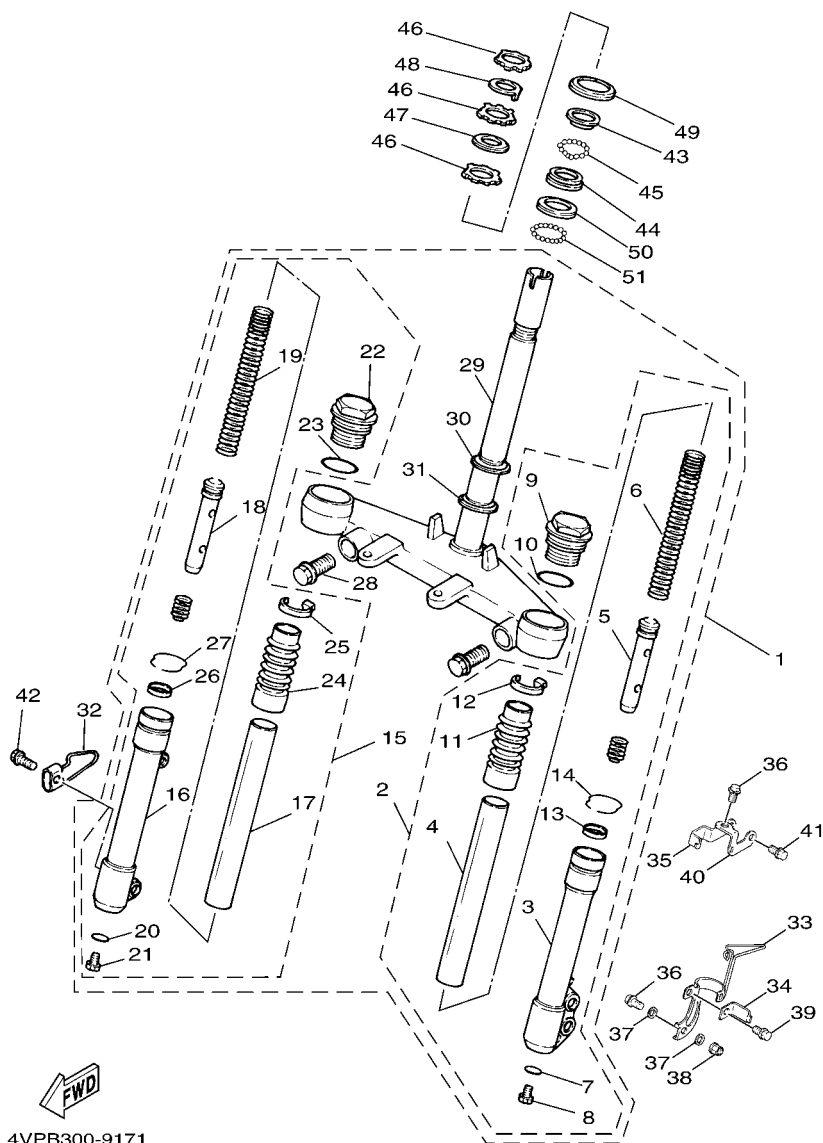
FIG. 16 REAR SUSPENSION

SUSPENSION TRASERO

REF. NO.	PART NO. CODIGO Nº	DESCRIPTION DESCRIPCION	5XB2	5XP2	5XR2	REMARKS OBSERVACIONES
1	5JU-F2210-00	SHOCK ABSORBER ASSY, REAR AMORTIGUADOR TRASERO COMPLETO	1	1	1	
2	90105-08121	BOLT, FLANGE TORNILLO	1	1	1	
3	90102-10031	BOLT, WITH HOLE PERNO CON ORIFICIO	1	1	1	
4	95707-10500	NUT, FLANGE TUERCA DE BRIDA	1	1	1	
5	90468-12006	CLIP PRESILLA	1	1	1	

FIG. 17 FRONT FORK

HORQUILLA DELANTERA

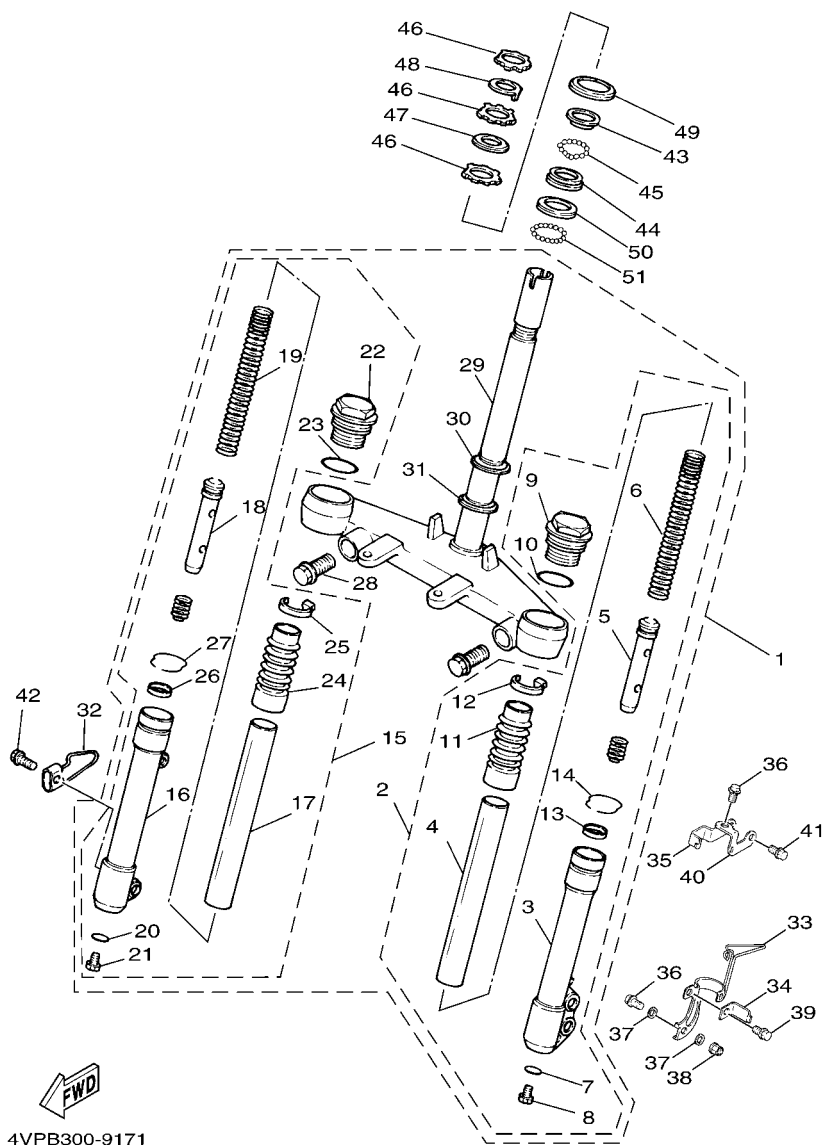


4VPB300-9171

REF. NO.	PART NO. CODIGO Nº	DESCRIPTION DESCRIPCION	5XB2	5XP2	5XR2	REMARKS OBSERVACIONES
1	4WX-F3100-12-33	FRONT FORK ASSY HORQUILLA DELANTERA COMPLETA	1	1	1	YB YB
2	4WX-F3102-10-33	..FRONT FORK ASSY (L.H) ..HORQUILLA DELANTERA COMPL.(MI)	1	1	1	
3	4JL-F3126-00-33	..TUBE, OUTER (LEFT) ..TUBO EXTERIOR (IZQUIERDO)	1	1	1	YB YB
4	4WX-F3110-00	..INNER TUBE COMP.1 ..TUBO INTERIOR COMPLETO 1	1	1	1	
5	4WX-F3170-00	..CYLINDER COMP., FRONT FORK ..CILINDRO COMPL DE HORQ DELA	1	1	1	
6	4WX-F3141-10	..SPRING, FRONT FORK ..RESORTE HORQUILLA DELANT.	1	1	1	
7	3GF-F3158-00	..GASKET ..EMPAQUE	1	1	1	
8	3GF-F3181-00	..BOLT, HEXAGON SOCKET HEAD ..TORNILLO CABEZAHEXAGONAL	1	1	1	
9	4WX-F3154-00	..PLUG, INNER TUBE ..TAPON TUBO INTERIOR	1	1	1	
10	3GF-F3147-00	..O-RING ..ARO	1	1	1	
11	4WX-F3191-10	..BOOT ..FUNDA	1	1	1	
12	4TE-F3192-00	..BAND ..BANDA	1	1	1	
13	5SU-F3145-00	..OIL SEAL ..RETEN DE ACEITE	1	1	1	
14	3NW-F3156-00	..CLIP, OIL SEAL ..PRESILLA DEL RETEN DE ACEITE	1	1	1	
15	4WX-F3103-10-33	..FRONT FORK ASSY (R.H) ..HORQUILLA DELANTERA COMPL.(MD)	1	1	1	
16	4JL-F3136-00-33	..TUBE, OUTER (RIGHT) ..TUBO EXTERIOR (DER.)	1	1	1	YB YB
17	4WX-F3110-00	..INNER TUBE COMP.1 ..TUBO INTERIOR COMPLETO 1	1	1	1	
18	4WX-F3170-00	..CYLINDER COMP., FRONT FORK ..CILINDRO COMPL DE HORQ DELA	1	1	1	
19	4WX-F3141-10	..SPRING, FRONT FORK ..RESORTE HORQUILLA DELANT.	1	1	1	
20	3GF-F3158-00	..GASKET ..EMPAQUE	1	1	1	
21	3GF-F3181-00	..BOLT, HEXAGON SOCKET HEAD ..TORNILLO CABEZAHEXAGONAL	1	1	1	
22	4WX-F3154-00	..PLUG, INNER TUBE ..TAPON TUBO INTERIOR	1	1	1	
23	3GF-F3147-00	..O-RING ..ARO	1	1	1	
24	4WX-F3191-10	..BOOT ..FUNDA	1	1	1	
25	4TE-F3192-00	..BAND ..BANDA	1	1	1	
26	5SU-F3145-00	..OIL SEAL ..RETEN DE ACEITE	1	1	1	
27	3NW-F3156-00	..CLIP, OIL SEAL ..PRESILLA DEL RETEN DE ACEITE	1	1	1	

FIG. 17 FRONT FORK

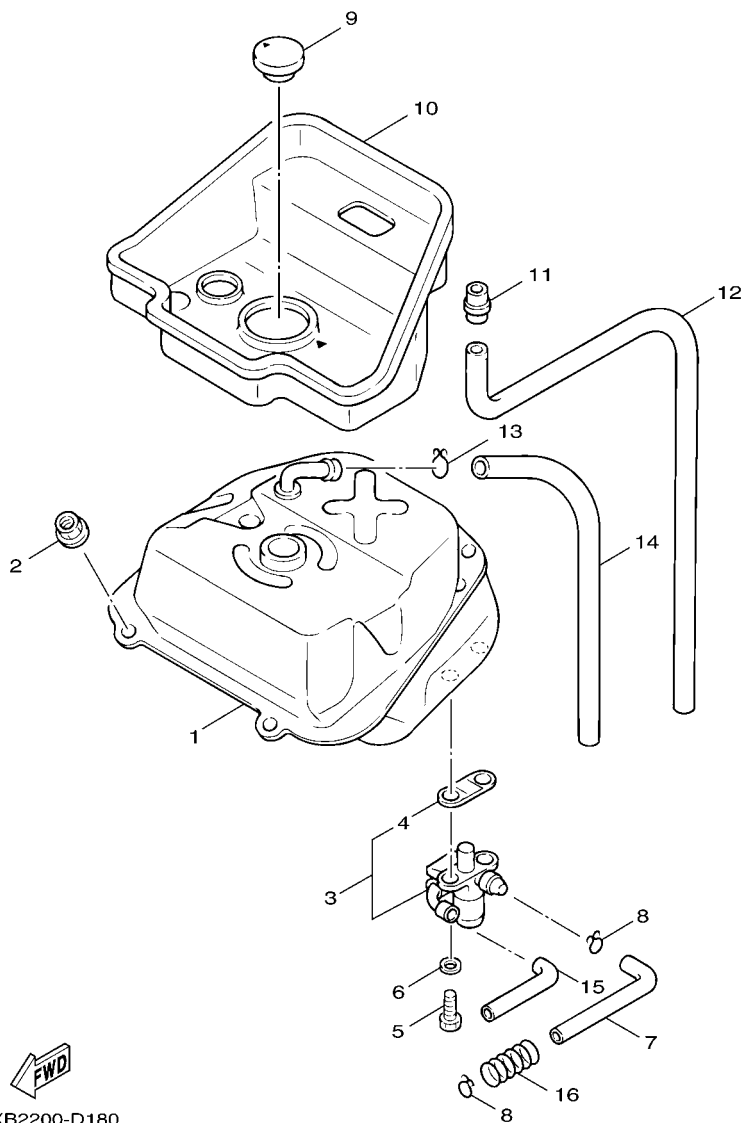
HORQUILLA DELANTERA



REF. NO.	PART NO. CODIGO Nº	DESCRIPTION DESCRIPCION	5XB2	5XP2	5XR2	REMARKS OBSERVACIONES
28	3GF-F3346-00	..BOLT 1 ..PERNO 1	2	2	2	
29	4WX-F3340-02	..UNDER BRACKET COMP. ..PLATINA INFERIOR COMPLETA	1	1	1	
30	1MH-F3411-00	..RACE, BALL 1 ..PISTA DE BOLAS 1	1	1	1	
31	3KW-F3462-00	..SEAL, STEERING ..RETEN DE DIRECCION	1	1	1	
32	3GF-F3317-00	HOLDER, CABLE SOSTEN DE CABLE	1		1	
33	4VP-F5875-01	HOLDER, BRAKE HOSE 1 SOPORTE DE MANGUERA FRENO 1	1	1	1	
34	5FA-F5876-00	HOLDER, BRAKE HOSE 2 SOPORTE DE MANGUERA FRENO 2	1	1	1	
35	4VP-F5876-00	HOLDER, BRAKE HOSE 2 SOPORTE DE MANGUERA FRENO 2	1	1	1	
36	95817-06020	BOLT, FLANGE TUERCA DE REBORDE	1	1	1	
37	90201-064J1	WASHER, PLATE ARANDELA PLANA	2	2	2	
38	95607-06100	NUT, U TUERCA AUTOBLOCANTE	1	1	1	
39	90119-05062	BOLT, WITH WASHER TORNILLO CON ARANDELA	1	1	1	
40	5FJ-F5886-00	HOLDER, BRAKE HOSE SOPORTE DE MANGUERA FRENO	1	1	1	
41	9580L-06012	BOLT, FLANGE TUERCA DE REBORDE	1	1	1	
42	95807-06010	BOLT, FLANGE TUERCA DE REBORDE	2	2	2	
43	22F-23411-01	RACE, BALL 1 PISTA DE BOLAS 1	1	1	1	
44	22F-23412-01	RACE, BALL 2 PISTA DE BOLAS 2	1	1	1	
45	93503-16003	BALL ESFERA	22	22	22	
46	90179-25615	NUT TUERCA	3	3	3	
47	90202-26142	WASHER, PLATE ARANDELA DE PLANA	1	1	1	
48	4VP-F3418-00	WASHER, SPECIAL ARANDELA ESPECIAL	1	1	1	
49	4TE-F3416-00	COVER, BALL RACE 2 CUBIERTA DE BASE DE BOLA 2	1	1	1	
50	156-23412-00	RACE, BALL 2 PISTA DE BOLAS 2	1	1	1	
51	93501-04011	BALL BOLA	19	19	19	

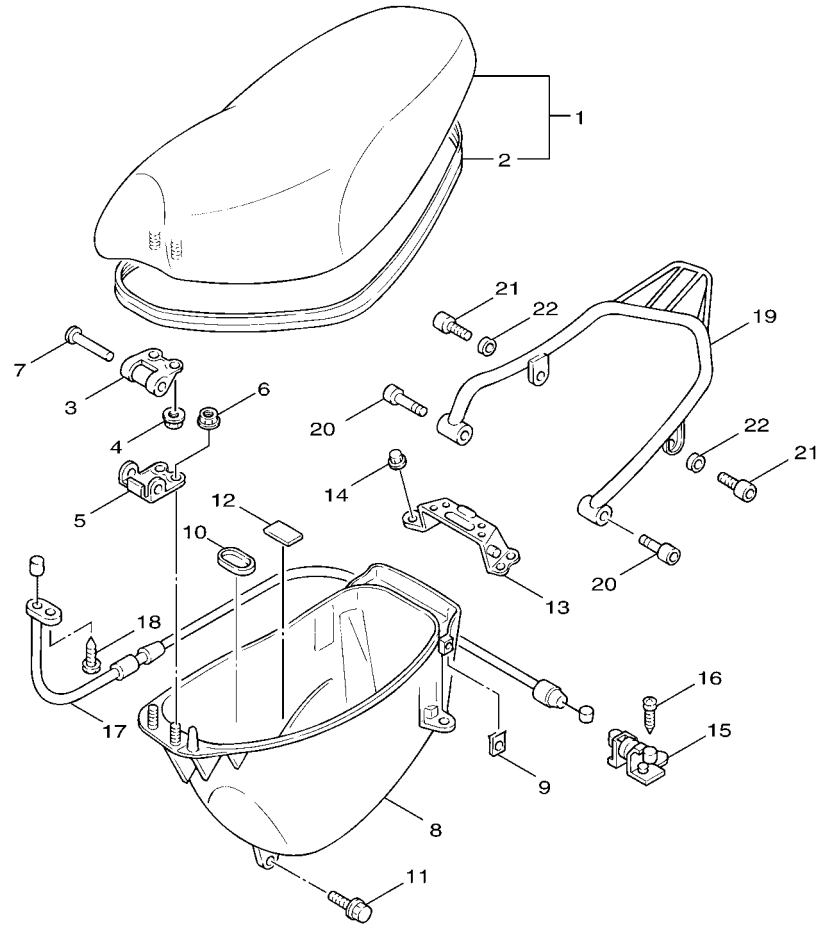
FIG. 18 FUEL TANK

DEPOSITO DE COMBUSTIBLE



5XB2200-D180

REF. NO.	PART NO. CODIGO Nº	DESCRIPTION DESCRIPCION	5XB2	5XP2	5XR2	REMARKS OBSERVACIONES
1	4VP-F4110-10-33	FUEL TANK COMP. DEPOSITO DE COMBUSTIBLE COMP.	1	1	1	YB YB
2	95707-06500	NUT, FLANGE TUERCA DE BRIDA	2	2	2	
3	4CW-F4500-00	FUEL COCK ASSY 1 GRIFO DE COMBUSTIBLE 1	1	1	1	
4	4CW-F452K-00	.O-RING .ANILLO O	1	1	1	
5	90149-06011	SCREW TORNILLO DE REGLAJE	2	2	2	
6	90202-05193	WASHER, PLATE ARANDELA DE PLANA	2	2	2	
7	4VP-F4311-00	PIPE, FUEL 1 TUBO DE COMBUSTIBLE 1	1	1	1	
8	90467-09006	CLIP PRESILLA	2	2	2	
9	4VP-F4610-01	CAP ASSY TAPA COMPLETA	1	1	1	
10	4VP-F414A-10	COVER, FILLER CUBIERTA DE LLENADOR	1	1	1	
11	4TE-F1753-00	BOSS, CONNECTOR COPA DE CONECTOR	1	1	1	
12	91A10-07056	TUBE, FLEXIBLE TUBO	1	1	1	
13	90467-09006	CLIP PRESILLA	1	1	1	
14	90445-078A3	HOSE (L460) TUBO (L460)	1	1	1	
15	90445-105H0	HOSE (L615) TUBO (L615)	1	1	1	
16	90501-08868	SPRING, COMPRESSION RESORTE DE COMPRESION		1		



4VP1414-7233

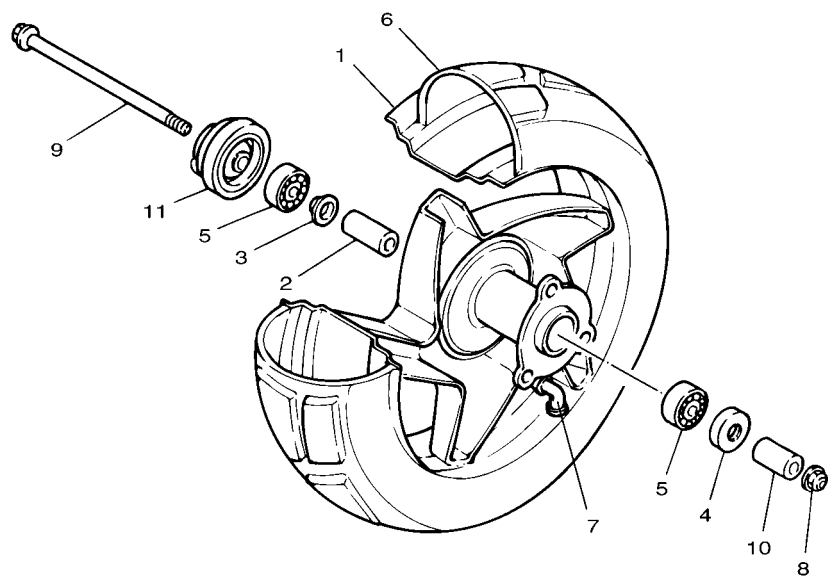
FIG. 19 SEAT

ASIENTO

REF. NO.	PART NO. CODIGO Nº	DESCRIPTION DESCRIPCION	5XB2	5XP2	5XR2	REMARKS OBSERVACIONES
1	5PJ-F4730-00	DOUBLE SEAT ASSY SILLIN DOBLE COMPLETO	1		1	
	5XP-F4730-00	DOUBLE SEAT ASSY SILLIN DOBLE COMPLETO		1		
2	4VP-F475M-00	.SEAL .SELLO	1	1	1	
3	4CW-F4726-01	HINGE, SEAT HINGE SEAT	1	1	1	
4	95707-06500	NUT, FLANGE TUERCA DE BRIDA	2	2	2	
5	4VP-F4726-00	HINGE, SEAT HINGE SEAT	1	1	1	
6	95707-06500	NUT, FLANGE TUERCA DE BRIDA	2	2	2	
7	90241-10015	PIN PASADOR	1	1	1	
8	4VP-F473R-01	BOX 1 CAJA 1	1	1	1	
9	90183-05807	NUT, SPRING TUERCA DE RESORTE	2	2	2	
10	4VP-F4742-00	GROMMET ANILLO PROTECTOR	1	1	1	
11	90109-063F1	BOLT PERNO	4	4	4	
12	3KW-F139X-00	DAMPER AMORTIGUADOR	1	1	1	
13	4VP-F4738-10	BRACKET, SEAT SOPORTE DE ASIENTO	1	1		
	5JU-F4738-00	BRACKET, SEAT SOPORTE DE ASIENTO		1		
14	95707-06500	NUT, FLANGE TUERCA DE BRIDA	4	4	4	
15	4UE-F4780-02	SEAT LOCK ASSY TORNILLO CONTROL DE AIRE	1	1	1	
16	97007-06016	BOLT PERNO	2	2	2	
17	4VP-F478E-00	CABLE, SEAT LOCK CABLE	1	1	1	
18	98507-05010	SCREW, PAN HEAD TORNILLO DE CABEZA CON PLANA	1	1	1	
19	4VP-F4812-01-1V	HANDLE MANIJA	1	1		FS
	5JU-F4842-10-1V	CARRIER, REAR PARRILLA		1		FS
20	91317-06045	BOLT PERNO	2	2	2	
21	91317-06016	BOLT PERNO	2	2	2	
22	92907-06600	WASHER, PLATE ARANDELA	2	2	2	

FIG. 20 FRONT WHEEL

RUEDA DELANTERA

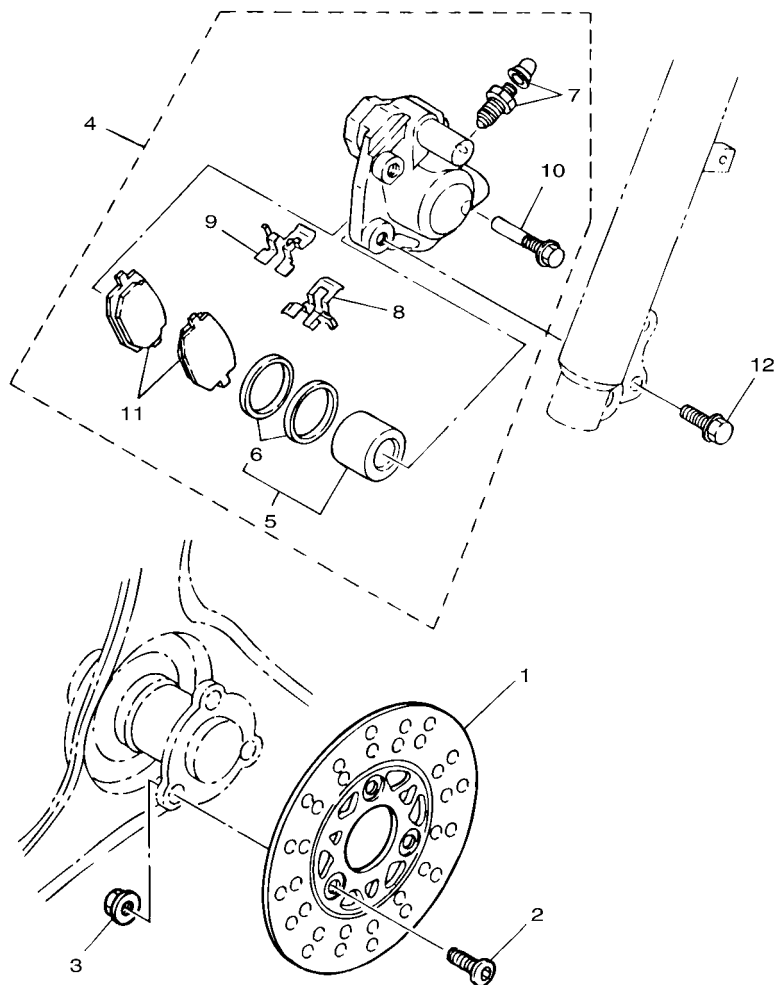


REF. NO.	PART NO. CODIGO Nº	DESCRIPTION DESCRIPCION	5XB2	5XP2	5XR2	REMARKS OBSERVACIONES
1	4WX-F5180-01-33	WHEEL COMP. RUEDA DELANTERA COMPLETA	1	1	1	YB YB
2	4WX-F5183-00	COLLAR, WHEEL COLLAR DE RUEDA	1	1	1	
3	20A-F5115-00	FLANGE, SPACER 1 BRIDA DE ESPACIADOR 1	1	1	1	
4	93102-17838	OIL SEAL SELLO ACEITE	1	1	1	
5	93306-300Y4	BEARING COJINETE	2	2	2	
6	94112-108S3	TIRE NEUMATICO	1		1	
7	93900-00802	VALVE, RIM VALVULA	1	1	1	
8	90185-10801	NUT, SELF-LOCKING TUERCA AUTOBLOCANTE	1	1	1	
9	4WX-F5181-00	AXLE, WHEEL EJE DE LA RUEDA	1	1	1	
10	90387-104U5	COLLAR COLLAR	1	1	1	
11	4VP-F5190-10	GEAR UNIT ASSY UNIDAD DE ENGRANAJE COMPLETA	1		1	
	5DA-F5190-10	GEAR UNIT ASSY UNIDAD DE ENGRANAJE COMPLETA		1		


4WX1414-7200

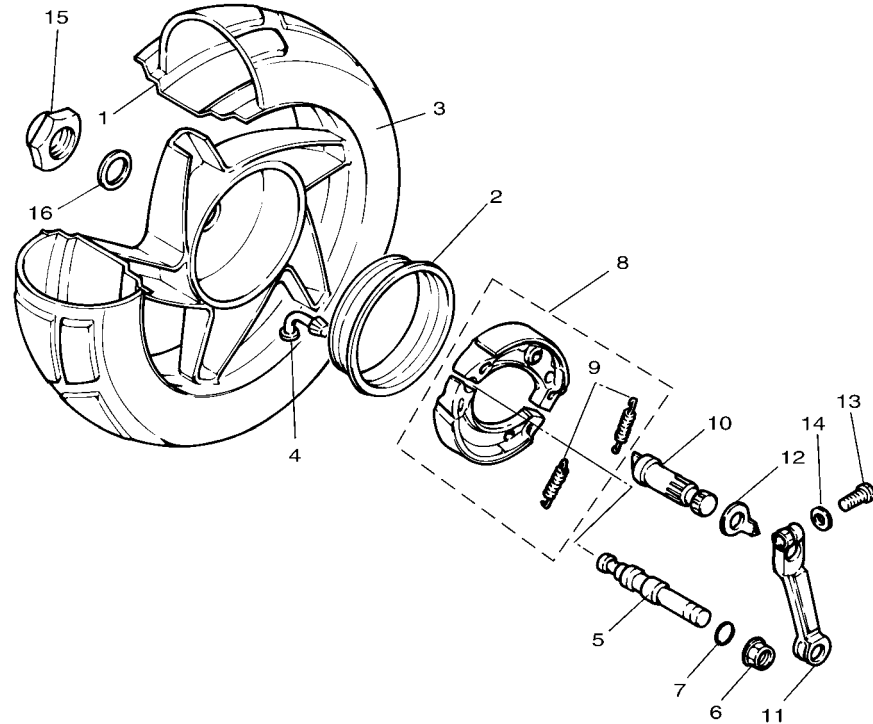
FIG. 21 FRONT BRAKE CALIPER

CALIBRE FRENO DELANTERA



3XG4414-4210

REF. NO.	PART NO. CODIGO Nº	DESCRIPTION DESCRIPCION	5XB2	5XP2	5XR2	REMARKS OBSERVACIONES
1	3XG-F582T-00	DISC, BRAKE (LEFT) DISCO DE FRENO (IZQUIERDO)	1	1	1	
2	90110-10811	BOLT, HEXAGON SOCKET HEAD TORNILLO ALLEN	3	3	3	
3	9570L-10500	NUT, FLANGE TUERCA DE BRIDA	3	3	3	
4	5JU-F580T-00	CALIPER ASSY (LEFT) CALIBRE COMPLETO (IZQUIERDO)	1	1	1	
5	3XG-W0057-00	.PISTON ASSY, CALIPER .PISTON COMPLETO PINZA	1	1	1	LM
6	3XG-W0047-00	..CALIPER SEAL KIT ..JUEGO DE RETENES DE PINZA	1	1	1	LM
7	3XG-W0048-00	.BLEED SCREW KIT .CJTO TORNILLO DE PURGA	1	1	1	LM
8	3XG-F5919-01	.SUPPORT, PAD .SOPORTE DE PASTILLAS	1	1	1	LM
9	3XG-F5919-11	.SUPPORT, PAD .SOPORTE DE PASTILLAS	1	1	1	LM
10	3XG-F5926-01	.BOLT .PERNO	1	1	1	
11	5JU-W0045-00	.BRAKE PAD KIT .JUEGO DE COJIN DE FRENO	1	1	1	LM
12	95827-08030	BOLT, FLANGE TUERCA DE REBORDE	2	2	2	




 4WX1414-7220

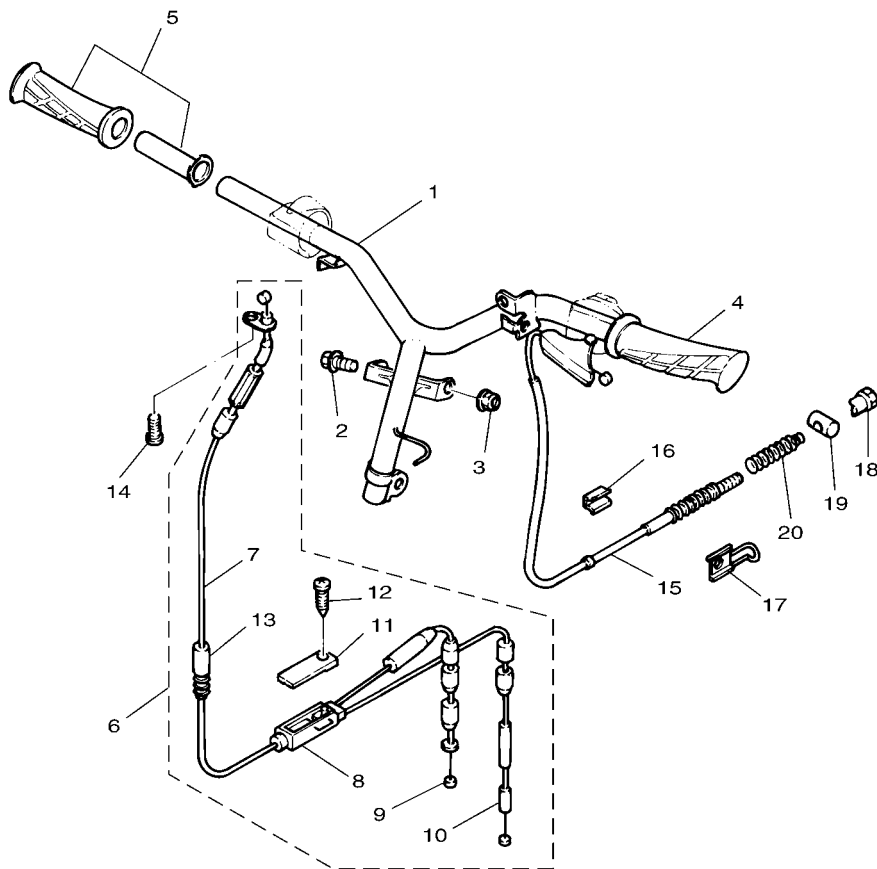
FIG. 22 REAR WHEEL

RUEDA TRASERA

REF. NO.	PART NO. CODIGO Nº	DESCRIPTION DESCRIPCION	5XB2	5XP2	5XR2	REMARKS OBSERVACIONES
1	4WX-F5390-00-33	REAR WHEEL COMP. RUEDA TRASERA COMPLETA	1	1	1	YB YB
2	4WX-F5336-00	RING 2 RESORTE 2	1	1	1	
3	94113-108S4	TIRE NEUMATICO	1		1	
4	93900-00802	VALVE, RIM VALVULA	1	1	1	
5	3UH-F5326-00	PIN, PIVOT PASADOR PIVOTE	1	1	1	
6	95707-10500	NUT, FLANGE TUERCA DE BRIDA	1	1	1	
7	93210-07890	O-RING ANILLO O	1	1	1	
8	4WX-X2533-00	BRAKE SHOE SET JUEGO DE ZAPATA DE FRENO	1	1	1	
9	90506-16447	.SPRING, TENSION .RESORTE DE TENSION	2	2	2	
10	3UH-F5351-00	CAMSHAFT ARBOL DE LEVAS	1	1	1	
11	4WX-F5355-00	LEVER, CAMSHAFT PALANCA DE ARBOL DE LEVAS	1	1	1	
12	4VP-F533A-00	PLATE, INDICATOR PLACA INDICADOR	1	1	1	
13	90101-06878	BOLT TORNILLO	1	1	1	
14	90201-142M6	WASHER, PLATE ARANDELA PLANA	1	1	1	
15	90185-14124	NUT, SELF-LOCKING TUERCA AUTOBLOCANTE	1	1	1	
16	90201-203E7	WASHER, PLATE ARANDELA PLANA	1	1	1	

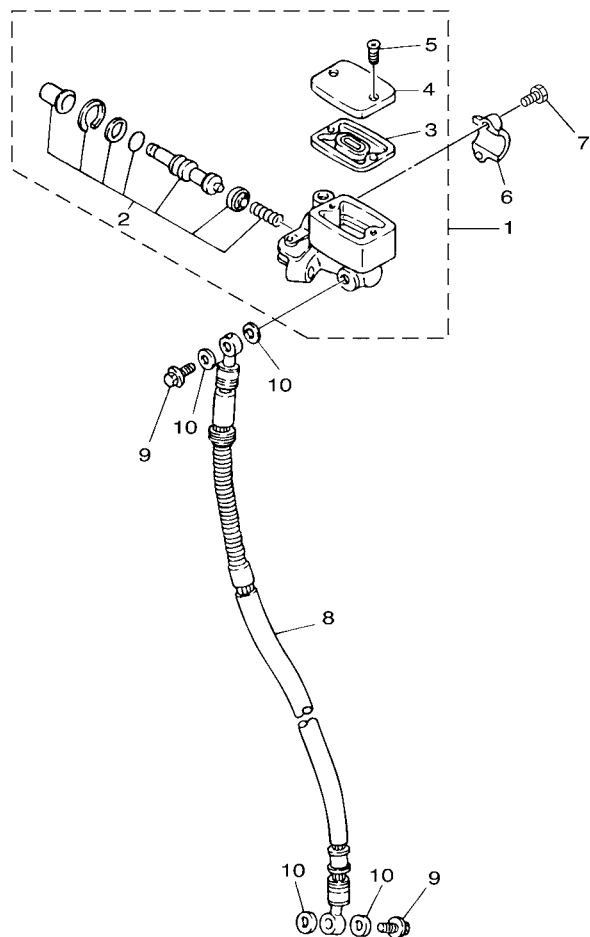
FIG. 23 STEERING HANDLE & CABLE MANILLAR & CABLE

REF. NO.	PART NO. CODIGO Nº	DESCRIPTION DESCRIPCION	5XB2	5XP2	5XR2	REMARKS OBSERVACIONES
1	4VP-F6110-01	HANDLE COMP. MANUBRIO COMPLETE	1	1	1	
2	90105-10036	BOLT, FLANGE TORNILLO	1	1	1	
3	90185-10801	NUT, SELF-LOCKING TUERCA AUTOBLOCANTE	1	1	1	
4	4VP-F6241-00	GRIP EMPUNADURA	1	1	1	
5	4VP-F6240-00	GRIP ASSY EMPUNADURA COMPLETA	1	1	1	
6	4VP-W2620-03	CABLE ASSY CABLE	1	1	1	
7	4VP-F6311-01	.CABLE, THROTTLE 1 .CABLE DE ACELERADOR 1	1	1	1	
8	4VP-F6260-02	.CABLE ASSY, THROTTLE & PUMP .CABLE OBTURADOR Y BOMBA	1	1	1	
9	4VP-F6321-02	.CABLE, PUMP .CABLE DE BOMBA	1	1	1	
10	4VP-F6312-01	.CABLE, THROTTLE 2 .CABLE DE ACELERADOR 2	1	1	1	
11	4VP-F6262-00	.CAP, CABLE CONNECTOR .TAPA DE CABLE CONECTOR	1	1	1	
12	90167-03800	.SCREW, TAPPING .TORNILLO DE ROSCA HEMBRA	1	1	1	
13	4VP-F6266-00	.BOOT, CYLINDER .FUNDA DE CILINDRO	1	1	1	
14	98507-05010	SCREW, PAN HEAD TORNILLO DE CABEZA CON PLANA	1	1	1	
15	4VP-F6351-01	CABLE, BRAKE CABLE DE FRENO	1	1	1	
16	4VP-F6393-00	HOLDER SOPORTE	1	1	1	
17	4VP-F637G-00	HOLDER, WIRE SOSTEN, DE CABLE	1	1	1	
18	90179-06411	NUT TUERCA	1	1	1	
19	90249-12008	PIN PASADOR	1	1	1	
20	90501-165J7	SPRING, COMPRESSION RESORTE DE COMPRESION	1	1	1	



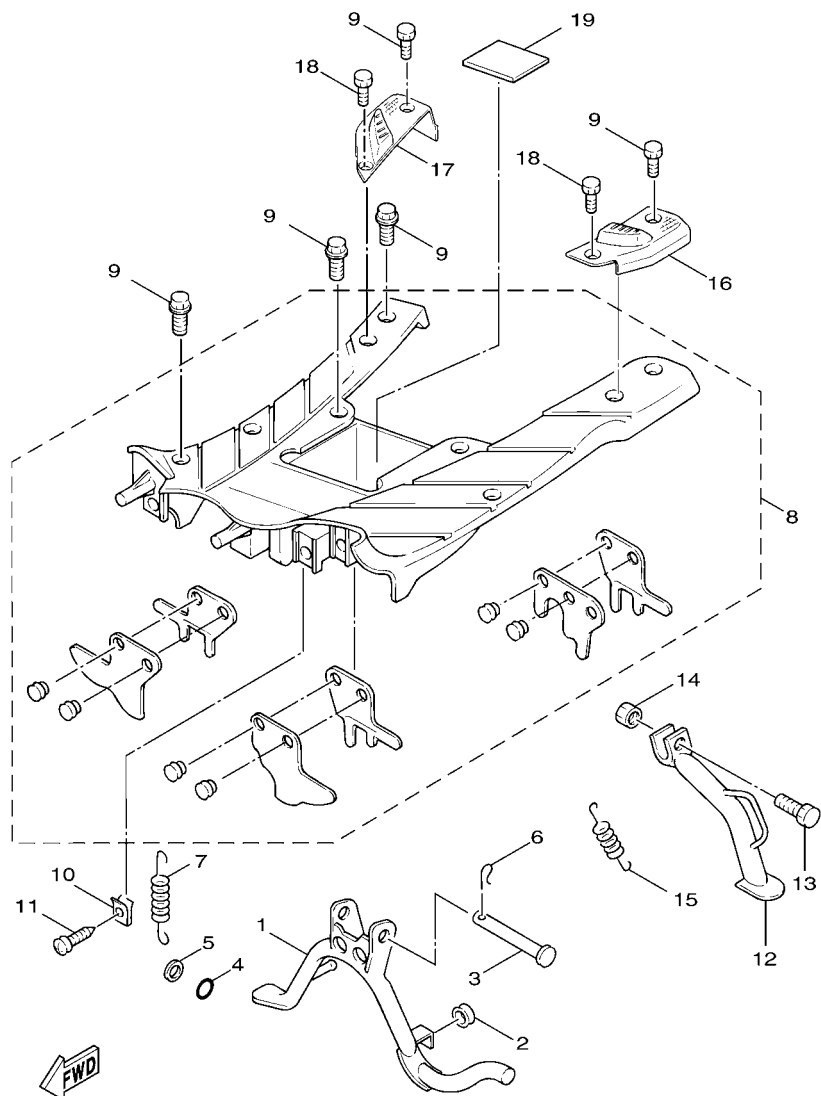
4VP1414-7270

FIG. 24 FRONT MASTER CYLINDER CILINDRO MAESTRO DELANTERO



3XG4414-4240

REF. NO.	PART NO. CODIGO Nº	DESCRIPTION DESCRIPCION	5XB2	5XP2	5XR2	REMARKS OBSERVACIONES
1	4JL-F5870-02	MASTER CYLINDER SUB ASSY CILINDRO MAESTRO COMPLETO	1	1		
2	3GF-W0041-00	.CYLINDER KIT, MASTER .JUEGO DE CILINDRO MAESTRO	1	1	1	
3	3GF-F5854-00	.DIAPHRAGM, RESERVOIR .DIAFRAGMA TANQUE RESERVA	1	1	1	
4	3GF-F5852-00	.CAP, RESERVOIR .TAPA DE TANQUE DE RESERVA	1	1	1	
5	98706-04012	.SCREW, FLAT HEAD .TORNILLO DE CABEZA PLANA	2	2	2	
6	3GF-F5867-00	BRACKET, MASTER CYLINDER SOPORTE DE CILINDRO MAESTRO	1	1		
7	91317-06025	BOLT PERNO	2	2	2	
8	4VP-F5872-12	HOSE, BRAKE 1 MANGUERA DE FRENO 1	1	1	1	
9	90401-10805	BOLT, UNION PERNO DE UNION	2	2	2	
10	90201-10118	WASHER, PLATE ARANDELA PLANA	4	4	4	

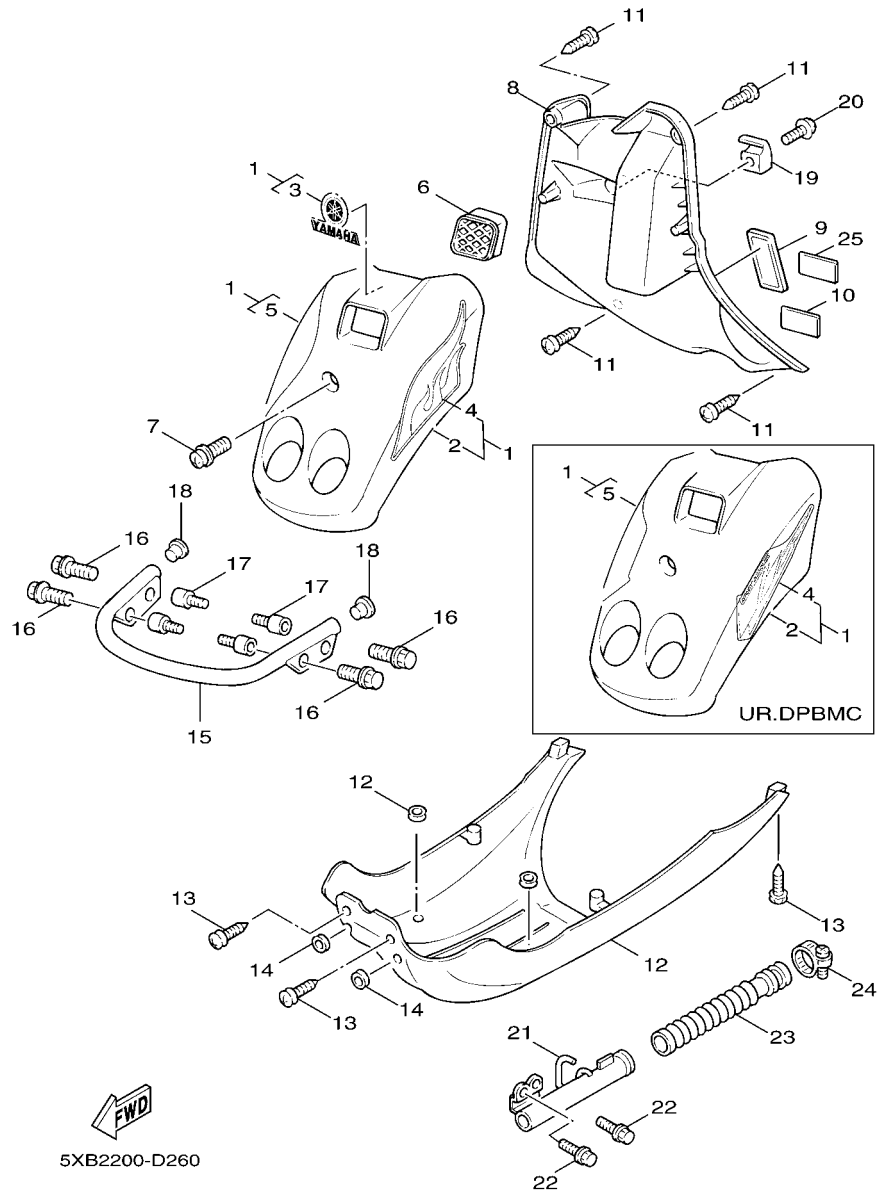


5XB2200-D250

FIG. 25 STAND

SOPORTE

REF. NO.	PART NO. CODIGO Nº	DESCRIPTION DESCRIPCION	5XB2	5XP2	5XR2	REMARKS OBSERVACIONES
1	4VP-F7111-01	STAND, MAIN PUNTAL PRINCIPAL	1	1	1	
2	4CW-F7114-00	STOPPER, MAIN STAND TOPE DE PUNTAL PRINCIPAL	1	1	1	
3	90240-10137	PIN, CLEVIS PASADOR CON HOYO	1	1	1	
4	93210-108B1	O-RING ANILLO O	1	1	1	
5	90202-10120	WASHER, PLATE ARANDELA DE PLANA	1	1	1	
6	90468-12006	CLIP PRESILLA	1	1	1	
7	90506-32857	SPRING, TENSION RESORTE DE TENSION	1	1	1	
8	5PJ-XF748-00	FOOTREST BOARD ASSY TABLERO DE APOYAPIE	1	1	1	
9	90119-06821	BOLT, WITH WASHER TORNILLO CON ARANDELA	6	6	6	
10	90183-05807	NUT, SPRING TUERCA DE RESORTE	8	8	8	
11	97707-50016	SCREW, TAPPING TORNILLO ROSCA HEMBRA	2	2	2	
12	4VP-F7311-01 5JU-F7311-10	STAND, SIDE PUNTAL LATERAL	1	1		
13	90109-10473	BOLT PERNO	1	1	1	
14	90185-10037	NUT, SELF-LOCKING TUERCA AUTOBLOCANTE	1	1	1	
15	90506-26805	SPRING, TENSION RESORTE DE TENSION	1	1	1	
16	5PJ-F7411-00	FOOTREST 1 APOYAPIE 1	1	1	1	
17	5PJ-F7421-00	FOOTREST 2 APOYAPIE 2	1	1	1	
18	90119-06079	BOLT, WITH WASHER TORNILLO CON ARANDELA	2	2	2	
19	5DA-H2176-00	DAMPER AMORTIGUADOR		1		



5XB2200-D260

FIG. 26 LEG SHIELD

PATA PROTEGIDA

REF. NO.	PART NO. CODIGO Nº	DESCRIPTION DESCRIPCION	5XB2	5XP2	5XR2	REMARKS OBSERVACIONES
1	4VP-X2831-A0-P0	LEG SHIELD 1 PROTECCION DE PATA 1	1		1	UR DPBMC UR DPBMC
	4VP-X2831-00-P7	LEG SHIELD 1 PROTECCION DE PATA 1	1		1	UR SMX UR SMX
	4VP-X2831-00-P8	LEG SHIELD 1 PROTECCION DE PATA 1	1		1	UR VRS5 UR VRS5
	4VP-X2831-10-WL	LEG SHIELD 1 PROTECCION DE PATA 1	1		1	UR STDS UR STDS
2	5XP-F8311-00-P0	LEG SHIELD 1 PROTECCION DE PATA 1			1	UR DPBMC UR DPBMC
	5XP-F8311-00-P1	LEG SHIELD 1 PROTECCION DE PATA 1			1	UR SMX UR SMX
	5XP-F8311-00-P2	LEG SHIELD 1 PROTECCION DE PATA 1			1	UR VRS5 UR VRS5
	5XP-F8311-00-WL	LEG SHIELD 1 PROTECCION DE PATA 1			1	UR STDS UR STDS
3	4TH-F152A-E0	.EMBLEM 3 .EMBLEMA 3	1		1	UR DPBMC UR DPBMC
	5XB-F152A-00	.EMBLEM 3 .EMBLEMA 3	1		1	UR SMX UR SMX
	5XB-F152A-10	.EMBLEM 3 .EMBLEMA 3	1		1	UR STDS UR STDS
	5XB-F152A-20	.EMBLEM 3 .EMBLEMA 3	1		1	UR VRS5 UR VRS5
	5XP-F152A-00	EMBLEM 3 EMBLEMA 3			1	UR DPBMC UR DPBMC
	5XP-F152A-10	EMBLEM 3 EMBLEMA 3			1	UR SMX UR SMX
	5XP-F152A-20	EMBLEM 3 EMBLEMA 3			1	UR STDS UR STDS
	5XP-F152A-30	EMBLEM 3 EMBLEMA 3			1	UR VRS5 UR VRS5
4	5PN-F832K-00	.GRAPHIC 12 .GRAFICO 12	1		1	UR DPBMC UR DPBMC
	5PN-F8391-00	.GRAPHIC 1 .CALCOMANIA DE BOVEDA 1	1		1	UR SMX/STD UR SMX/STD
	5PN-F8391-10	.GRAPHIC 1 .CALCOMANIA DE BOVEDA 1	1		1	UR VRS5 UR VRS5
	5XP-F832K-00	GRAPHIC 12 GRAFICO 12			1	UR DPBMC UR DPBMC
	5XP-F8391-00	GRAPHIC 1 CALCOMANIA DE BOVEDA 1			1	UR SMX/STD UR SMX/STD
	5XP-F8391-10	GRAPHIC 1 CALCOMANIA DE BOVEDA 1			1	UR VRS5 UR VRS5
5	5PN-F832L-00	.GRAPHIC 13 .GRAFICO 13	1		1	UR DPBMC UR DPBMC
	5PN-F8392-00	.GRAPHIC 2 .CALCOMANIA DE BOVEDA 2	1		1	UR SMX/STD UR SMX/STD
	5PN-F8392-10	.GRAPHIC 2 .CALCOMANIA DE BOVEDA 2	1		1	UR DPBMC UR DPBMC
	5XP-F832L-00	GRAPHIC 13 GRAFICO 13			1	UR DPBMC UR DPBMC
	5XP-F8392-00	GRAPHIC 2 CALCOMANIA DE BOVEDA 2			1	UR SMX/STD UR SMX/STD

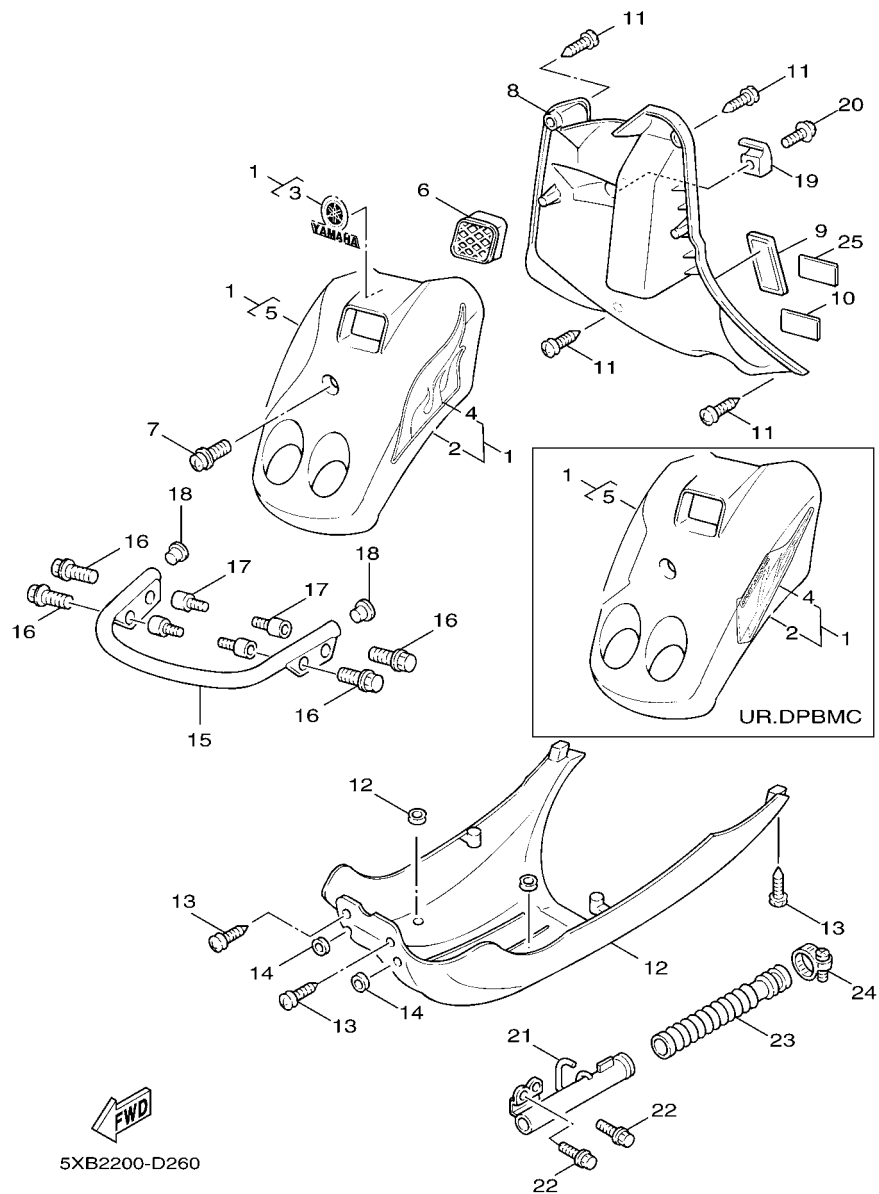


FIG. 26 LEG SHIELD

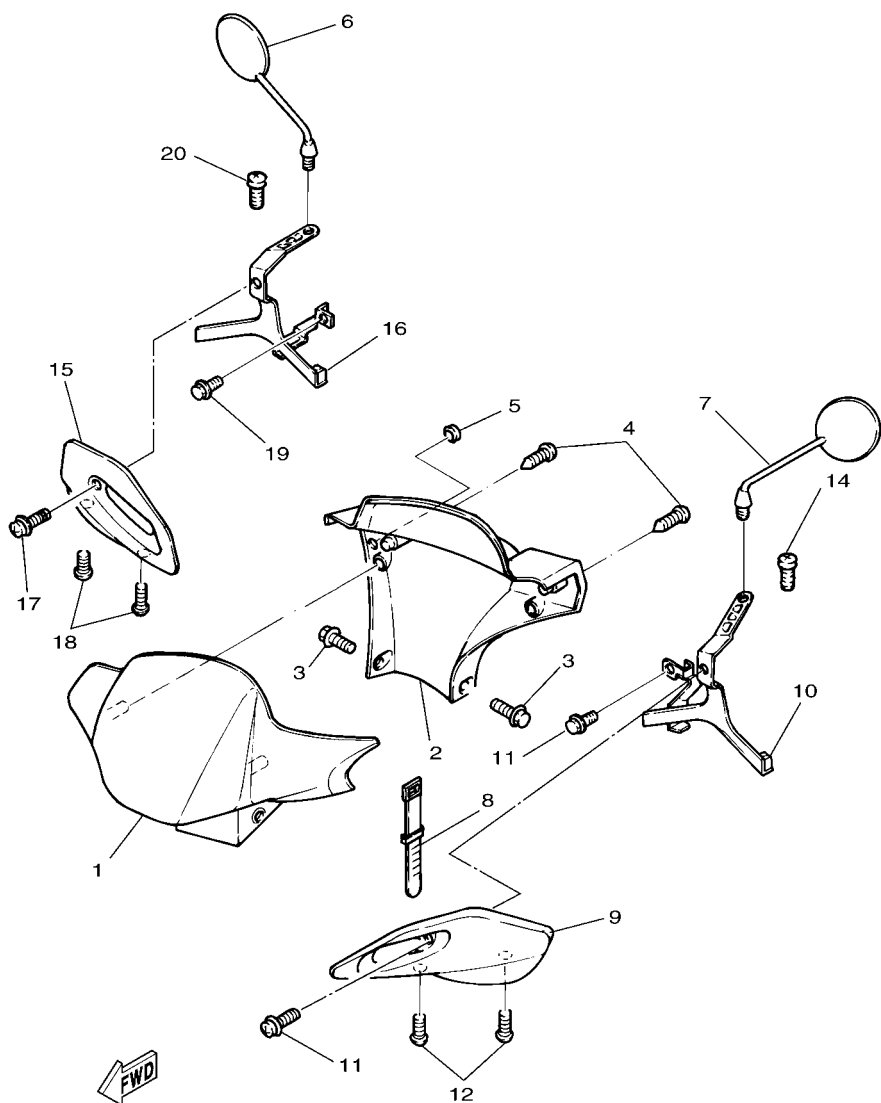
PATA PROTEGIDA

REF. NO.	PART NO. CODIGO Nº	DESCRIPTION DESCRIPCION	5XB2	5XP2	5XR2	REMARKS OBSERVACIONES
5	5XP-F8392-10	GRAPHIC 2 CALCOMANIA DE BOVEDA 2		1		UR VRS5 UR VRS5
6	4VP-F834V-00	PROTECTOR 1 PROTECTOR 1	1	1	1	
7	90159-06812	SCREW, WITH WASHER TORNILLO CON VALONA	1	1	1	
8	4VP-F8300-01	LEG SHIELD ASSY PROTECCION DE PATA COMPLETA	1	1	1	
9	5FM-F8349-00	CAP TAPA	1	1	1	YB MDS
10	4JK-F1568-00	LABEL, WARNING ETIQUETA DE PRECAUCION	1			
	4JK-F1568-30	LABEL, WARNING ETIQUETA DE PRECAUCION		1		
11	97707-50016	SCREW, TAPPING TORNILLO ROSCA HEMBRA	4	4	4	
12	4VP-F8385-11	COVER, LOWER CUBIERTA INFERIOR	1	1	1	
13	97707-50016	SCREW, TAPPING TORNILLO ROSCA HEMBRA	6	6	6	
14	3GF-F6199-00	PLUG, BLIND TAPON	4	4	4	
15	4VP-F840K-00-1V	GUARD COMP. ACCESORIO	1		1	FS FS
	5JU-F840K-10-1V	GUARD COMP. ACCESORIO		1		FS FS
16	95027-06020	BOLT, FLANGE PERNO, DE BRIDA	4	4	4	
17	4VP-F1535-00	NUT 1 TUERCA 1	4	4	4	
18	90338-16148	PLUG TAPON	2	2	2	
19	4VP-F8257-01	HOOK 1 GANCHO 1	1	1	1	
20	90159-06811	SCREW, WITH WASHER TORNILLO CON VALONA	1	1	1	
21	4VP-F838K-00	BOX 1 CAJA 1	1		1	
	5JU-F838K-00	BOX 1 CAJA 1		1		
22	95807-06014	BOLT, FLANGE TUERCA DE REBORDE	2	2	2	
23	4VP-F1851-00	DUCT, COOLER CONDUCTO DE ENFRIADOR	1	1	1	
24	90460-35260	CLAMP, HOSE BRIDA, DE UNION	2	2	2	
25	5XP-F1668-00	LABEL, TIRE ETIQUETA DE FRANJA		1		

FIG. 27 COWLING 1

BOVEDA 1

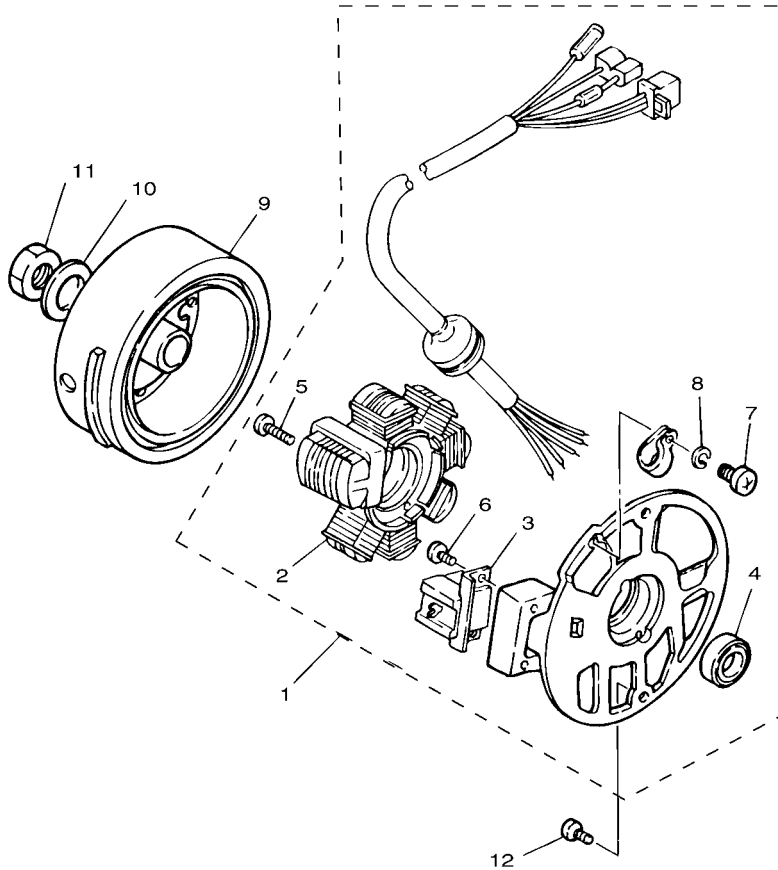
REF. NO.	PART NO. CODIGO Nº	DESCRIPTION DESCRIPCION	5XB2	5XP2	5XR2	REMARKS OBSERVACIONES
1	4VP-F6143-00-P0	COVER, HANDLEBAR UPPER 1 CUBIERTA DE MANUBRIO SUPERIOR1	1		1	UR DPBMC UR DPBMC
	4VP-F6143-00-P8	COVER, HANDLEBAR UPPER 1 CUBIERTA DE MANUBRIO SUPERIOR1	1		1	UR SMX UR SMX
	4VP-F6143-00-PA	COVER, HANDLEBAR UPPER 1 CUBIERTA DE MANUBRIO SUPERIOR1	1		1	UR VRS5 UR VRS5
	4VP-F6143-00-WL	COVER, HANDLEBAR UPPER 1 CUBIERTA DE MANUBRIO SUPERIOR1	1		1	UR STDS UR STDS
	5XP-F6143-00-P0	COVER, HANDLEBAR UPPER 1 CUBIERTA DE MANUBRIO SUPERIOR1		1		UR DPBMC UR DPBMC
	5XP-F6143-00-P1	COVER, HANDLEBAR UPPER 1 CUBIERTA DE MANUBRIO SUPERIOR1		1		UR SMX UR SMX
	5XP-F6143-00-P2	COVER, HANDLEBAR UPPER 1 CUBIERTA DE MANUBRIO SUPERIOR1		1		UR VRS5 UR VRS5
	5XP-F6143-00-WL	COVER, HANDLEBAR UPPER 1 CUBIERTA DE MANUBRIO SUPERIOR1		1		UR STDS UR STDS
2	4VP-F6145-00	COVER, HANDLEBAR UPPER 2 CUBIERTA DE MANUBRIO SUPERIOR2	1	1	1	
3	90159-05831	SCREW, WITH WASHER TORNILLO CON VALONA	2	2	2	
4	90160-05803	SCREW, ROUND TAPPING TORNILLO REDONDO ROSCA HEMBRA	2	2	2	
5	3GF-F6199-00	PLUG, BLIND TAPON	1	1	1	
6	4VP-F6290-00	REAR VIEW MIRROR ASSY (RIGHT) ESPEJO COMPLETO (DERECHO)	1	1	1	
7	4VP-F6280-00	REAR VIEW MIRROR ASSY (LEFT) ESPEJO COMPLETO (IZQUIERDO)	1	1	1	
8	90465-13275	CLAMP BRIDA	1	1	1	
9	4VP-F6141-00	GUARD, BRUSH 1 GUARDA ESCOBILLA 1	1	1	1	UR SMX/STDS/VRS5 UR SMX/STDS/VRS5
	4VP-F6141-20	GUARD, BRUSH 1 GUARDA ESCOBILLA 1	1	1	1	UR DPBMC UR DPBMC
10	4VP-F612M-01	BRACKET 4 SOPORTE 4	1	1	1	
11	90159-05820	SCREW, WITH WASHER TORNILLO CON VALONA	1	1	1	
12	90149-05821	SCREW TORNILLO DE REGLAJE	2	2	2	
13	95807-06012	BOLT, FLANGE TUERCA DE REBORDE	1	1	1	
14	95807-08014	BOLT, FLANGE TUERCA DE REBORDE	1	1	1	
15	4VP-F6142-00	GUARD, BRUSH 2 GUARDA ESCOBILLA 2	1	1	1	UR SMX/STDS/VRS5 UR SMX/STDS/VRS5
	4VP-F6142-20	GUARD, BRUSH 2 GUARDA ESCOBILLA 2	1	1	1	UR DPBMC UR DPBMC
16	4VP-F612N-01	BRACKET 5 SOPORTE 5	1	1	1	
17	90159-05820	SCREW, WITH WASHER TORNILLO CON VALONA	1	1	1	
18	90149-05821	SCREW TORNILLO DE REGLAJE	2	2	2	



4VPA414-9350

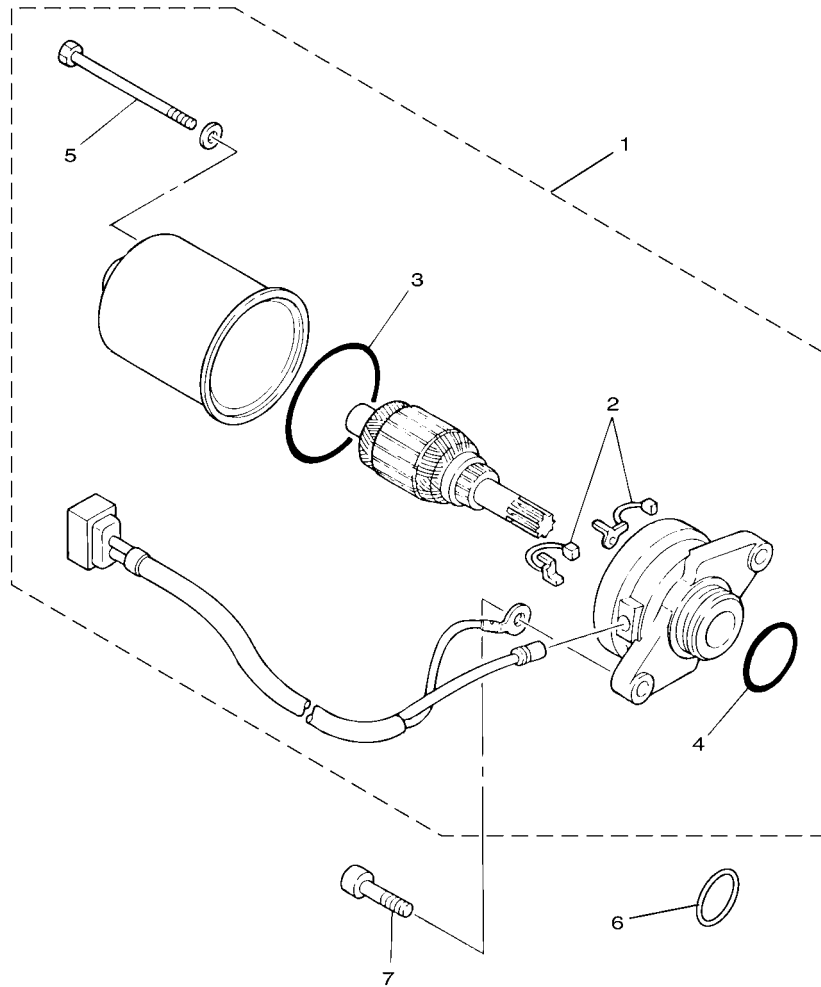
FIG. 28 GENERATOR

GENERADOR



REF. NO.	PART NO. CODIGO Nº	DESCRIPTION DESCRIPCION	5XB2	5XP2	5XR2	REMARKS OBSERVACIONES
1	3XG-H5560-00	BASE ASSY CONJUNTO BASE	1	1	1	
2	3GF-H1403-V0	.STATORCOMP. .ESTATOR COMPLETO	1	1	1	
3	3GF-H5580-V0	.COIL, PULSER .BOBINA DE PULSACION	1	1	1	
4	93104-19097	.OIL SEAL .SELLO ACEITE	1	1	1	
5	98501-05020	.SCREW, PAN HEAD .TORNILLO DE CABEZA CRUZADA	2	2	2	
6	98501-05010	.SCREW, PAN HEAD .TORNILLO DE CABEZA CRUZADA	2	2	2	
7	98501-04008	.SCREW, PAN HEAD .TORNILLO DE CABEZA CRUZADA	1	1	1	
8	92901-04100	.WASHER, SPRING .ARANDELA PLANA	1	1	1	
9	4KX-H5550-00	ROTOR ASSY ROTOR COMPLETO	1	1	1	
10	92907-12600	WASHER, PLATE ARANDELA	1	1	1	
11	95307-12600	NUT TUERCA	1	1	1	
12	98507-06016	SCREW, PAN HEAD TORNILLO DE CABEZA CON PLANA	2	2	2	


 3XG4414-4280




 4VP1414-7371

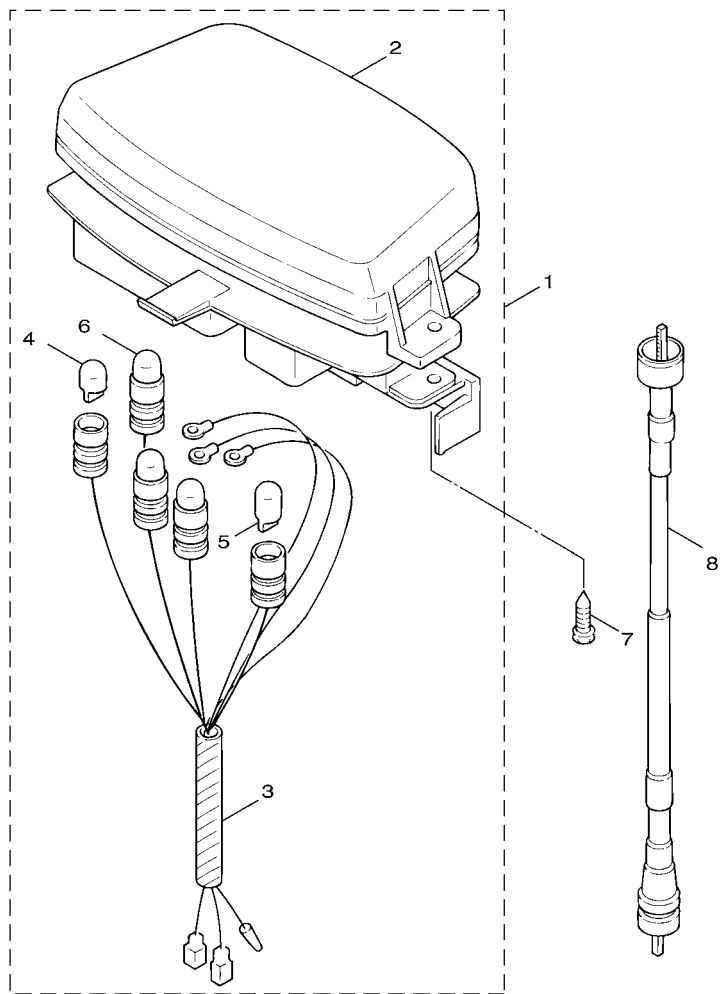
FIG. 29 STARTING MOTOR

MOTOR DE ARRANQUE

REF. NO.	PART NO. CODIGO Nº	DESCRIPTION DESCRIPCION	5XB2	5XP2	5XR2	REMARKS OBSERVACIONES
1	4VP-H1800-20	STARTING MOTOR ASSY MOTOR DE ARRANQUE COMPLETO	1	1	1	
2	4DM-H1801-00	.BRUSH SET .JUEGO DE ESCOBILLA	1	1	1	
3	93210-44678	.O-RING .ANILLO O	1	1	1	
4	93210-23614	.O-RING .ANILLO O	1	1	1	
5	3NW-H1828-V0	.BOLT 2 .ARANDELA DE EMPUJE 2	2	2	2	
6	90202-26166	WASHER, PLATE ARANDELA DE PLANA	1	1	1	
7	91318-06020	BOLT TORNILLO	2	2	2	

FIG. 31 METER

MEDIDOR



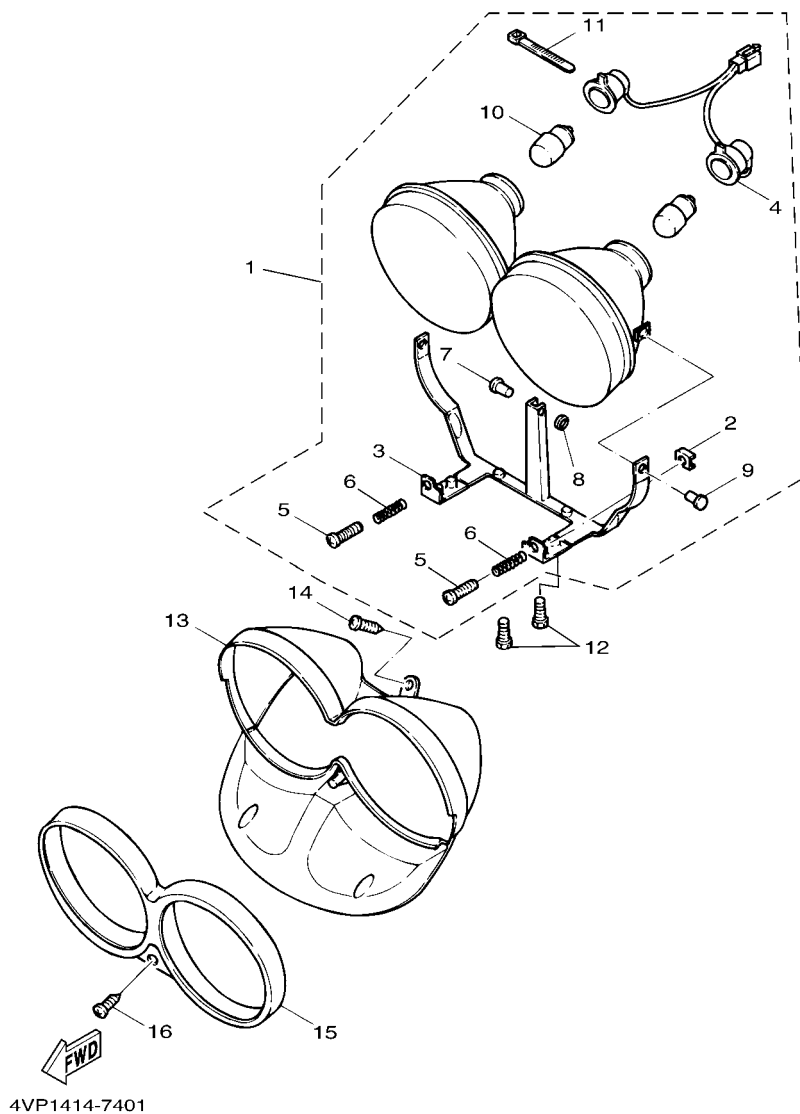
REF. NO.	PART NO. CODIGO Nº	DESCRIPTION DESCRIPCION	5XB2	5XP2	5XR2	REMARKS OBSERVACIONES
1	4VP-H3510-00	SPEEDOMETER ASSY VELOCIMETRO COMPL.	1	1	1	
2	4VP-H353K-00	.GLASS PLATE .CUBIERTA DE MEDIDOR	1	1	1	
3	4VP-H3509-00	.SOCKET CORD ASSY .ENCASTRE DE CABLE COMPLETO	1	1	1	
4	3GF-H3517-00	.BULB (12V-1.7W) .AMPOLLETA	3	3	3	
5	4VP-H3517-00	.BULB (12V 3.4W) .AMPOLLETA (12V-3.4W)	1	1	1	
6	4TE-H3518-00	.BULB, METER (12V 1.7W) .AMPOLLETA DE MEDIDOR (1.7W)	1	1	1	
7	97707-50016	SCREW, TAPPING TORNILLO ROSCA HEMBRA	3	3		
	97707-50016	SCREW, TAPPING TORNILLO ROSCA HEMBRA		4		
8	4VP-H3550-02	SPEEDOMETER CABLE ASSY CABLE DE VELOCIMETRO COMPLETO	1	1	1	



4VP1414-7391

FIG. 32 HEADLIGHT

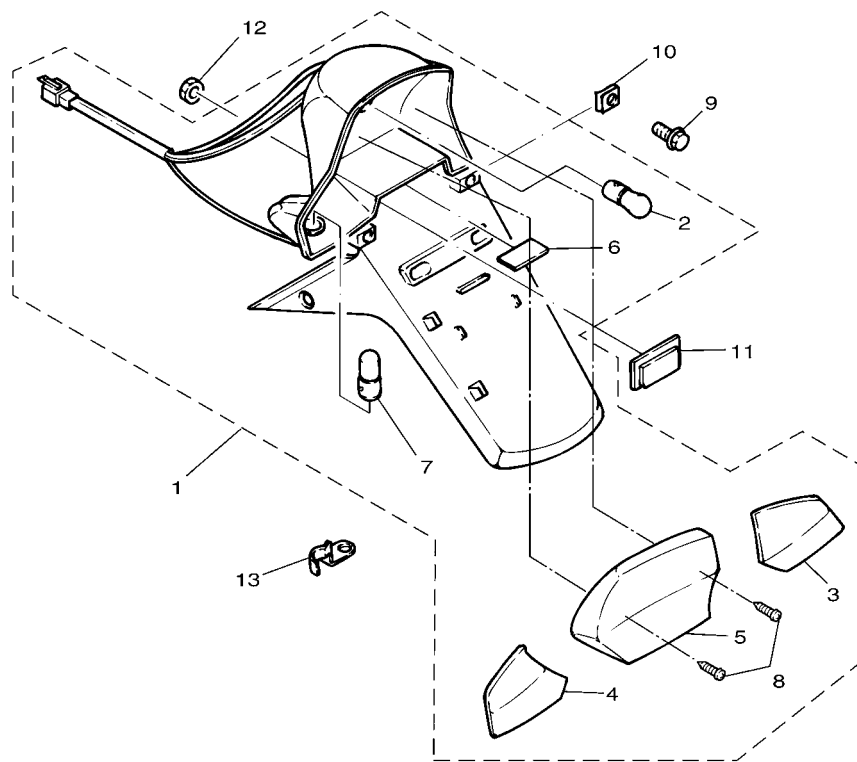
FARO DELANTERO



REF. NO.	PART NO. CODIGO Nº	DESCRIPTION DESCRIPCION	5XB2	5XP2	5XR2	REMARKS OBSERVACIONES
1	4VP-H430A-00	HEADLIGHT UNIT ASSY UNIDAD DE FARO DELANTERO COMPL	1	1	1	
2	4VP-H4317-00	.NUT .TUERCA	2	2	2	
3	4VP-H4318-00	.STAY, HEADLIGHT 1 .APOYO DE FARO DELANTERO 1	1	1	1	
4	4VP-H4359-00	.CORD, HEADLIGHT .CABLE DE FARO DELANTERO	1	1	1	
5	4VP-H4331-00	.SCREW, RIM ADJUSTING .TORNILLO DE AJUSTE DE ARO	2	2	2	
6	4VP-H4332-00	.SPRING, SCREW .RESORTE DE TORNILLO	2	2	2	
7	4VP-H431V-00	.PIN .PASADOR	1	1	1	
8	4VP-H4198-00	.CLIP, COVER FITTING .PRESILLA, CUBIERTA FIXATION	1	1	1	
9	4VP-H4337-00	.BOLT, SPECIAL .PERNO ESPECIAL	2	2	2	
10	3UH-H4314-10	.BULB, HEADLIGHT (12V-20/20W) .BOMBILLA DE FARO DELANTERO	2	2	2	
11	4VP-H4351-00	.CLAMP, CORD .GRAMPA DE CABLE	1	1	1	
12	95807-06016	BOLT, FLANGE TUERCA DE REBORDE	4	4	4	
13	4VP-H4144-00	COVER, HEADLIGHT CUBIERTA FARO DELANTERO	1	1	1	
14	97707-50012	SCREW, TAPPING TORNILLO ROSCA HEMBRA	1	1	1	
15	4VP-H4169-00	GUARD, HEADLIGHT PROTECCION DE FARO DELANTERO	1	1		
	4VP-H4169-10	GUARD, HEADLIGHT PROTECCION DE FARO DELANTERO		1		
16	90163-05800	SCREW, TAPPING TORNILLO ROSCA HEMBRA	1	1	1	

FIG. 33 TAILLIGHT

LUZ DE COLA

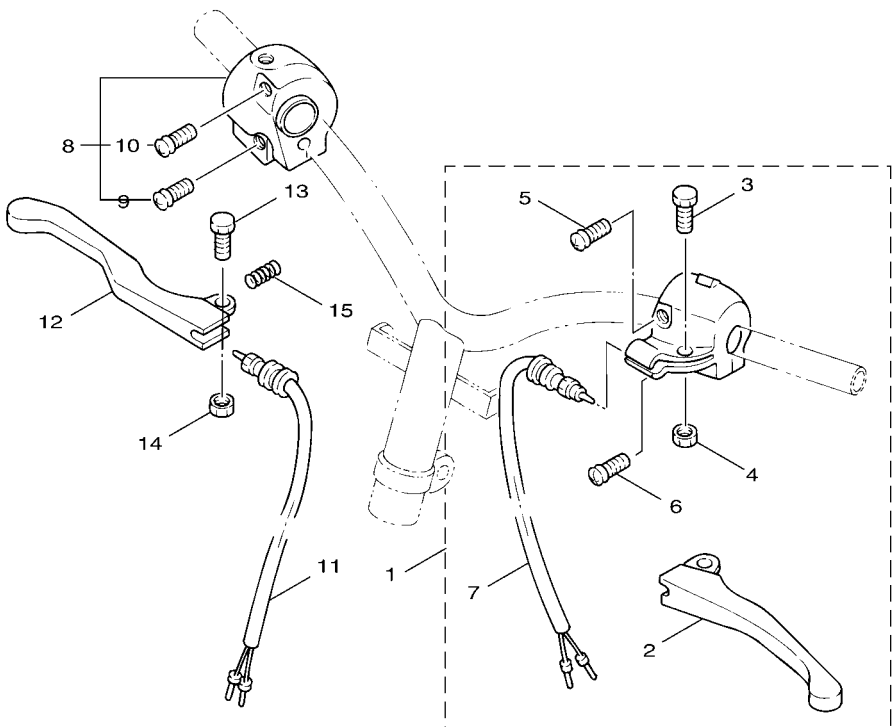


REF. NO.	PART NO. CODIGO Nº	DESCRIPTION DESCRIPCION	5XB2	5XP2	5XR2	REMARKS OBSERVACIONES
1	4VP-H4700-00	TAILLIGHT ASSY FARO TRASERO COMPLET.	1	1	1	
2	4TE-H4714-00	.BULB .BOMBILLA	1	1	1	
3	4VP-H3342-00	.LENS, FLASHER 2 .LENTE DE DESTELLADOR	1	1	1	
4	4VP-H3332-00	.LENS, FLASHER .LENTE DE DESTELLADOR	1	1	1	
5	4VP-H4721-00	.LENS, TAILLIGHT .LENTE DE FARO TRASERO	1	1	1	
6	4VP-H4743-00	.LENS, LICENCE LIGHT .LENTE DE LUZ DE LICENCIA	1	1	1	
7	4VP-H3331-00	.BULB, FLASHER .AMPOLLETA DE DESTELLADOR	2	2	2	
8	97707-40616	.SCREW, TAPPING .TORNILLO ROSCA HEMBRA	2	2	2	
9	90119-06079	BOLT, WITH WASHER TORNILLO CON ARANDELA	2	2	2	
10	90183-05807	NUT, SPRING TUERCA DE RESORTE	4	4	4	
11	3KW-H5130-00	REAR REFLECTOR ASSY REFLECTOR TRASERO COMPLETO	1	1	1	
12	95707-05300	NUT, FLANGE TUERCA DE BRIDA	1	1	1	
13	4VP-H4519-00	BRACKET, TAILLIGHT SOPORTE DE FARO TRASERO	1	1	1	

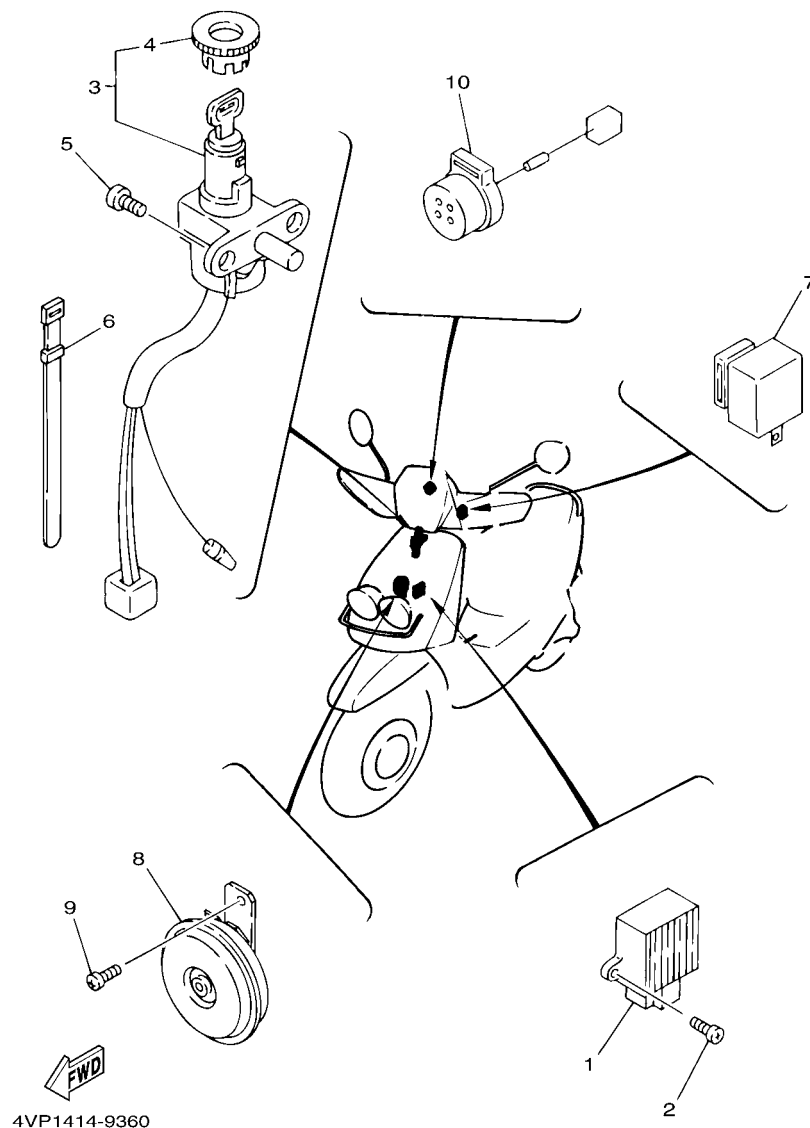

4VP5200-7330

FIG. 34 HANDLE SWITCH & LEVER INTERRUPTOR DE MANILLAR&PALANC

REF. NO.	PART NO. CODIGO Nº	DESCRIPTION DESCRIPCION	5XB2	5XP2	5XR2	REMARKS OBSERVACIONES
1	4VP-H2910-00	LEVER HOLDER ASSY (LEFT) SOPORTE DE LEVA COMPLT 1	1	1	1	
2	4VP-H3912-00	.LEVER 1 .PALANCA 1	1	1	1	
3	3XG-H3915-00	.SCREW, LEVER FITTING .TORNILLO ACCESORIO DE PALANC	1	1	1	
4	95607-05100	.NUT, U .TUERCA AUTOBLOCANTE	1	1	1	
5	98507-05020	.SCREW, PAN HEAD .TORNILLO DE CABEZA PLANA	1	1	1	
6	98507-05030	.SCREW, PAN HEAD .TORNILLO DE CABEZA PLANA	1	1	1	
7	3XG-H3980-10	.FRONT STOP SWITCH ASSY .INTERRUP.PARADA DELANTERO	1	1	1	
8	3XG-H3975-30	SWITCH, HANDLE 2 INTERRUPTOR MANIJA 2	1	1	1	
9	98506-05025	.SCREW, PAN HEAD .TORNILLO, DE CABEZA CRUZADA	1	1	1	
10	98506-05035	.SCREW, PAN HEAD .TORNILLO, DE CABEZA CRUZADA	1	1	1	
11	3GF-H3980-00	FRONT STOP SWITCH ASSY INTERRUP.PARADA DELANTERO	1	1	1	
12	4VP-H3922-10	LEVER 2 PALANCA 2	1	1	1	
13	90109-06577	BOLT PERNO	1	1	1	
14	95607-06100	NUT, U TUERCA AUTOBLOCANTE	1	1	1	
15	90501-10312	SPRING, COMPRESSION RESORTE DE COMPRESION	1	1	1	



FWD
4VP1414-7420



4VP1414-9360

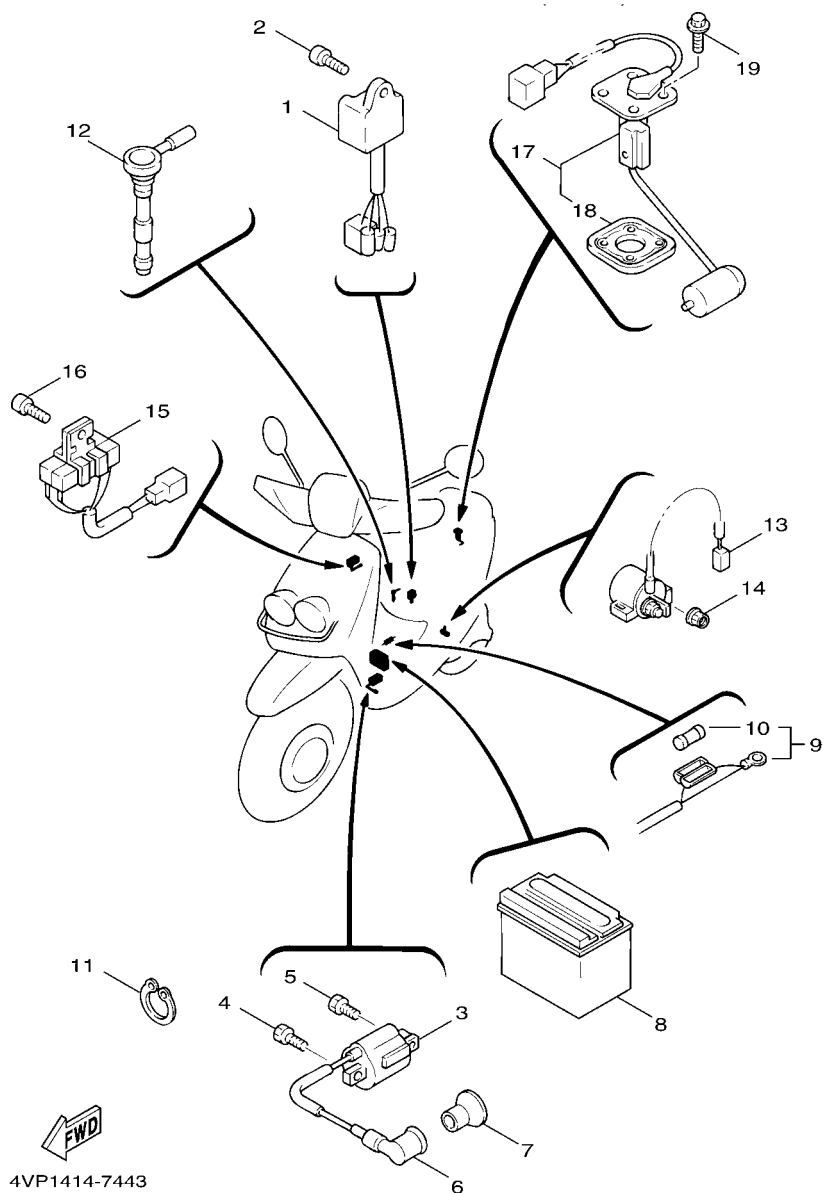
FIG. 35 ELECTRICAL 1

EQUIPO ELECTRICO 1

REF. NO.	PART NO. CODIGO Nº	DESCRIPTION DESCRIPCION	5XB2	5XP2	5XR2	REMARKS OBSERVACIONES
1	3GF-H1960-00	RECTIFIER & REGULATOR ASSY RECTIFICADOR Y REGULADOR	1	1	1	
2	98507-05010	SCREW, PAN HEAD TORNILLO DE CABEZA CON PLANA	2	2	2	
3	4VP-H2501-03	MAIN SWITCH STEERING LOCK LLAVE DE IGNICION COMPLT	1	1	1	
4	4VP-H2552-00	.CAP, SWITCH .TAPA DE INTERRUPTOR	1	1	1	
5	9760L-06216	SCREW, PAN HEAD WITH WASHER TORNILLO CAB CON PLANA C/ARAN	2	2	2	
6	23Y-H3936-00	BAND, SWITCH CORD BANDA DE CABLE DE INTERRUPTOR	2	2	2	
7	1MH-H3350-V0	FLASHER RELAY ASSY RELE DE DESTELLADOR COMPL.	1	1	1	
8	4KP-H3371-01	HORN BOCINA	1	1	1	
9	98507-06010	SCREW, PAN HEAD TORNILLO DE CABEZA PLANA	1	1	1	
10	3XY-H3390-01	AUDIO PILOT ASSY ALAR	1	1	1	

FIG. 36 ELECTRICAL 2

EQUIPO ELECTRICO 2



REF. NO.	PART NO. CODIGO Nº	DESCRIPTION DESCRIPCION	5XB2	5XP2	5XR2	REMARKS OBSERVACIONES
1	4DM-H5540-00	C.D.I. UNIT ASSY UNIDAD C.D.I. COMPLETA	1	1	1	
2	90159-06056	SCREW, WITH WASHER TORNILLO CON VALONA	1	1	1	
3	4VP-H2310-01	IGNITION COIL ASSY BOBINA DE ENCENDIDO COMPLETA	1	1	1	
4	97007-06016	BOLT PERNO	1	1	1	
5	90153-06839	SCREW, HEXAGON TORNILLO HEXAGONAL	1	1	1	
6	4VP-H2370-00	PLUG CAP ASSY TAPON DE BUJIA COMPLT	1	1	1	
7	4VP-H2372-00	SEAL, PLUG CAP SELLO DE TAPON	1	1	1	
8	5HK-H2100-10	BATTERY ASSY BATERIA COMPLETA	1	1	1	
9	4VP-H2590-10 5JU-H2590-00	WIRE HARNESS ASSY CONJUNTO DE CABLES WIRE HARNESS ASSY CONJUNTO DE CABLES	1	1	1	
10	1NT-H2151-00	.FUSE .FUSIBLE	1	1	1	
11	90465-13275	CLAMP BRIDA	2	2	2	
12	4VP-H5720-00	OIL LEVEL GAUGE ASSY MEDIDOR DE NIVEL DE ACEITE	1	1	1	
13	3KW-H1940-02	STARTER RELAY ASSY CONJUNTO ARRANCADOR RELEVO	1	1	1	
14	95307-06600	NUT TUERCA	2	2	2	
15	3GF-H5370-01	RESISTOR ASSY RESISTOR COMPLETO	1	1	1	
16	98507-06020	SCREW, PAN HEAD TORNILLO DE CABEZA CON PLANA	1	1	1	
17	4VP-X8575-00	SENDER UNIT ASSY MEDIDOR DE COMBUSTIBLE COMPL.	1	1	1	
18	53X-H5753-00	.GASKET, SENDER UNIT .EMPAQUE DE UNIDAD TRANSMISORA	1	1	1	
19	90119-05071	BOLT, WITH WASHER TORNILLO CON ARANDELA	4	4	4	

NUMERICAL INDEX
INDICE NUMERICO

PART NO. CODIGO N°	REF. NO.	PART NO. CODIGO N°	REF. NO.	PART NO. CODIGO N°	REF. NO.	PART NO. CODIGO N°	REF. NO.	PART NO. CODIGO N°	REF. NO.	PART NO. CODIGO N°	REF. NO.
3AA-13124-00	4 - 5	4VP-E2658-00	3 - 10	4VP-E5477-00	8 - 33	4VP-F1535-00	26 - 17	5PN-F179M-30	14 - 12	5XP-F4730-00	19 - 1
4VP-13178-00	4 - 15	4VP-E2659-00	3 - 11	4VP-E5512-00	9 - 7	4VP-F1552-00	13 - 4	4VP-F1851-00	26 - 23	5JU-F4738-00	19 - 13
3WF-13185-00	4 - 2	5FA-E3100-11	4 - 1	4VP-E5524-00	9 - 1	4JK-F1568-00	26 - 10	5JU-F2210-00	16 - 1	4VP-F4738-10	19 - 13
1YU-13187-00	4 - 3	4VP-E316F-00	4 - 8	3XG-E5532-00	9 - 11	4JK-F1568-30	26 - 10	4X6-F2216-00	8 - 3	4VP-F473R-01	19 - 8
1YU-13473-00	4 - 4	3XG-E3342-00	9 - 9	4VP-F1629-00	9 - 5	4VP-F1629-00	13 - 9	4WX-F3100-12-33	17 - 1	4VP-F4742-00	19 - 10
1YU-13516-00	4 - 6	4WX-E3555-10	5 - 6	4VP-E5601-00	9 - 13	5XP-F1668-00	26 - 25	4WX-F3102-10-33	17 - 2	4VP-F475M-00	19 - 2
1YU-13577-00	4 - 7	3XG-E3575-01	5 - 8	5FA-E5620-00	9 - 18	4VP-F1691-01	13 - 12	4WX-F3103-10-33	17 - 15	4UE-F4780-02	19 - 15
4UF-14103-00	6 - 18	4VP-E3610-00	5 - 1	4VP-E5630-00	9 - 20	4VP-F1711-00	14 - 1	4WX-F3110-00	17 - 4	4VP-F478E-00	19 - 17
3MB-14104-00	6 - 12	3XG-E3613-00	5 - 2	4VP-E5650-00	9 - 6	4VP-F171E-00-P0	14 - 18		17 - 17	4VP-F4812-01-1V	19 - 19
3XG-14107-00	6 - 19	3XG-E3616-00	5 - 3	4VP-E5659-00	8 - 19	5XP-F171E-00-P0	14 - 18	4JL-F3126-00-33	17 - 3	5JU-F4842-10-1V	19 - 19
4VP-14112-35	6 - 5	4SC-E3621-00	5 - 5	4VP-E5673-00	9 - 21	5XP-F171E-00-P1	14 - 18	4JL-F3136-00-33	17 - 16	20A-F5115-00	20 - 3
52W-14131-00	6 - 3	5JU-E4101-00	6 - 1	4VP-E6111-00	10 - 1	5XP-F171E-00-P2	14 - 18	4WX-F3141-10	17 - 6	4WX-F5180-01-33	20 - 1
4VP-14141-11	6 - 7	4VP-E4411-00	5 - 11	4VP-E6611-00	10 - 15	4VP-F171E-00-P8	14 - 18		17 - 19	4WX-F5181-00	20 - 9
193-14142-35	6 - 11	4VP-E4412-00	5 - 14	3XY-E6620-01	10 - 5	4VP-F171E-00-PA	14 - 18	5SU-F3145-00	17 - 13	4WX-F5183-00	20 - 2
52W-14147-00	6 - 17	4VP-E4437-00	5 - 12	3UH-E6626-00	10 - 6	4VP-F171E-00-WL	14 - 18		17 - 26	4VP-F5190-10	20 - 11
18A-1414A-65	6 - 9	4VP-E443E-00	5 - 22	4VP-E7211-00	11 - 7	5XP-F171E-00-WL	14 - 18	3GF-F3147-00	17 - 10	5DA-F5190-10	20 - 11
522-14161-00	6 - 22	4VP-E4445-00	7 - 2	4VP-E7410-00	11 - 1	5XP-F1721-00-P0	14 - 6		17 - 23	3UH-F5326-00	22 - 5
4VP-14171-00	6 - 16	4VP-E4451-00	5 - 19	4VP-E7421-00	11 - 6	5XP-F1721-00-P1	14 - 6	4WX-F3154-00	17 - 9	4WX-F5336-00	22 - 2
53L-14186-00	6 - 20	4VP-E4452-00	5 - 20	4VP-E7611-00	10 - 25	5XP-F1721-00-P2	14 - 6		17 - 22	4VP-F533A-00	22 - 12
4KP-14191-00	6 - 13	4VP-E4453-00	5 - 15	4VP-E7620-00	10 - 17	5XP-F1721-00-WL	14 - 6	3NW-F3156-00	17 - 14	3UH-F5351-00	22 - 10
3XG-14196-00	6 - 10	4VP-E4462-00	5 - 17	4VP-E7623-00	10 - 20	5XP-F1731-00-P0	14 - 11		17 - 27	4WX-F5355-00	22 - 11
3XG-14198-00	6 - 2	4VP-E4463-00	5 - 16	4CW-E7653-00	10 - 21	5XP-F1731-00-P1	14 - 11	3GF-F3158-00	17 - 7	4WX-F5390-00-33	22 - 1
4VP-1490J-00	6 - 6	4VP-E4467-00	5 - 18	4VP-E7660-01	10 - 7	5XP-F1731-00-P2	14 - 11		17 - 20	5JU-F580T-00	21 - 4
3XG-14997-00	6 - 8	5JU-E4610-00-98	7 - 1	4DM-E7664-00	10 - 11	5XP-F1731-00-WL	14 - 11	4WX-F3170-00	17 - 5	3XG-F582T-00	21 - 1
14T-15657-00	10 - 27	3NT-E4613-01	7 - 4	4VP-E7670-01	10 - 8	4VP-F1733-00	15 - 3		17 - 18	3GF-F5852-00	24 - 4
4KX-17632-00	10 - 19	4VP-E4627-10	7 - 9	4DM-E7684-00	10 - 13	5JU-F1733-00	15 - 3	3GF-F3181-00	17 - 8	3GF-F5854-00	24 - 3
4VP-17641-00	10 - 24	4VP-E4718-00	7 - 8	5XB-F1110-00-33	12 - 1	4VP-F1734-00	15 - 4		17 - 21	3GF-F5867-00	24 - 6
22F-23411-01	17 - 43	5JU-E4718-00	7 - 8	5XR-F1110-00-33	12 - 1	4VP-F1741-00	14 - 15	4WX-F3191-10	17 - 11	4JL-F5870-02	24 - 1
156-23412-00	17 - 50	4VP-E475M-00	7 - 14	5XP-F1110-01-33	12 - 1	4VP-F1745-00	15 - 7		17 - 24	4VP-F5872-12	24 - 8
22F-23412-01	17 - 44	3XY-E4766-00	7 - 19	3KW-F139X-00	19 - 12	4VP-F1751-00	15 - 1	4TE-F3192-00	17 - 12	4VP-F5875-01	17 - 33
4VP-E1111-00	1 - 1	4CW-E4766-00	7 - 11	4Y4-F139X-01	12 - 7	5JU-F1751-00	15 - 1		17 - 25	4VP-F5876-00	17 - 35
4VP-E1162-00	1 - 4		7 - 17	4VP-F1410-10	12 - 6	4TE-F1753-00	18 - 11	3GF-F3317-00	17 - 32	5FA-F5876-00	17 - 34
4VP-E1181-00	1 - 2	4VP-E4779-00	7 - 3	3XG-F1481-00	12 - 2	4X6-F1771-02	15 - 6	5JU-F3317-00	17 - 32	5FJ-F5886-00	17 - 40
4VP-E1311-10	1 - 5	4VP-E4799-20	7 - 13	4Y4-F1481-00	12 - 4	5PN-F179J-00	14 - 7	4WX-F3340-02	17 - 29	3XG-F5919-01	21 - 8
5FA-E1351-00	1 - 6	5FA-E5111-12	8 - 1	4VP-F1511-01	13 - 1	5XP-F179J-00	14 - 7	3GF-F3346-00	17 - 28	3XG-F5919-11	21 - 9
4VP-E1400-00	2 - 1	4VP-E5118-00	8 - 31	4VP-F1511-71	13 - 1	5PN-F179K-00	14 - 12	1MH-F3411-00	17 - 30	3XG-F5926-01	21 - 10
4VP-E1412-00	2 - 2	4VP-E5121-00	8 - 2	4VP-F1514-00	12 - 9	5XP-F179K-00	14 - 12	4TE-F3416-00	17 - 49	4VP-F6110-01	23 - 1
4VP-E1422-00	2 - 6	4VP-E5128-00	8 - 28	4VP-F1519-01	13 - 6	5PN-F179L-00	14 - 7	4VP-F3418-00	17 - 48	4VP-F612M-01	27 - 10
4VP-E1603-00	2 - 15	3XG-E5317-00	8 - 9	4VP-F1519-41	13 - 6	5XP-F179L-00	14 - 7	3KW-F3462-00	17 - 31	4VP-F612N-01	27 - 16
4VP-E1631-10-A0	2 - 13	4Y4-E5363-00	8 - 24	5XB-F152A-00	26 - 3	5XP-F179L-10	14 - 7	4VP-F4110-10-33	18 - 1	4VP-F6141-00	27 - 9
4VP-E1633-00	2 - 14	3XG-E5371-00	8 - 5	5XP-F152A-00	26 - 3	5PN-F179L-20	14 - 7	4VP-F414A-10	18 - 10	4VP-F6141-20	27 - 9
4VP-E1651-00	2 - 5	4VP-E5373-00	8 - 6	5XB-F152A-10	26 - 3	5XP-F179L-20	14 - 7	4VP-F4311-00	18 - 7	4VP-F6142-00	27 - 15
4DM-E1681-00	2 - 3	4VP-E5411-00-33	8 - 17	5XP-F152A-10	26 - 3	5PN-F179L-30	14 - 7	4CW-F4500-00	18 - 3	4VP-F6142-20	27 - 15
4VP-E2611-00	3 - 12	4VP-E5421-00	8 - 11	5XB-F152A-20	26 - 3	5PN-F179M-00	14 - 12	4CW-F452K-00	18 - 4	4VP-F6143-00-P0	27 - 1
4DY-E262H-00	3 - 4	4VP-E5439-00	8 - 16	5XP-F152A-20	26 - 3	5XP-F179M-00	14 - 12	4VP-F4610-01	18 - 9	5XP-F6143-00-P0	27 - 1
3XG-E2631-00	3 - 15	5DA-E5451-00	8 - 18	5XP-F152A-30	26 - 3	5XP-F179M-10	14 - 12	4VP-F4726-00	19 - 5	5XP-F6143-00-P1	27 - 1
5FA-E2651-10	3 - 1	5DA-E5461-00	8 - 12	4TH-F152A-E0	26 - 3	5PN-F179M-20	14 - 12	4CW-F4726-01	19 - 3	5XP-F6143-00-P2	27 - 1
5FA-E2653-02	3 - 3	4SC-E5462-00	8 - 30	2GF-F1535-00	14 - 4	5XP-F179M-20	14 - 12	5PJ-F4730-00	19 - 1	4VP-F6143-00-P8	27 - 1

NUMERICAL INDEX
INDICE NUMERICO

PART NO. CODIGO N°	REF. NO.	PART NO. CODIGO N°	REF. NO.	PART NO. CODIGO N°	REF. NO.	PART NO. CODIGO N°	REF. NO.	PART NO. CODIGO N°	REF. NO.	PART NO. CODIGO N°	REF. NO.
4VP-F6143-00-PA	27 - 1	5PN-F8391-10	26 - 4	4VP-H3922-10	34 - 12	4WX-X2533-00	22 - 8	90183-05807	14 - 14	90465-13275	27 - 8
4VP-F6143-00-WL	27 - 1	5XP-F8391-10	26 - 4	23Y-H3936-00	35 - 6	4VP-X2831-00-P7	26 - 1		19 - 9		36 - 11
5XP-F6143-00-WL	27 - 1	5PN-F8392-00	26 - 5	3XG-H3975-30	34 - 8	4VP-X2831-00-P8	26 - 1		25 - 10	90467-08003	4 - 9
4VP-F6145-00	27 - 2	5XP-F8392-00	26 - 5	3GF-H3980-00	34 - 11	4VP-X2831-10-WL	26 - 1		33 - 10	90467-09006	18 - 8
3GF-F6199-00	26 - 14	5PN-F8392-10	26 - 5	4VP-H3980-10	34 - 7	4VP-X2831-A0-P0	26 - 1	90185-10037	25 - 14		18 - 13
	27 - 5	5XP-F8392-10	26 - 5	4VP-H4144-00	32 - 13	4VP-X8575-00	36 - 17	90185-10801	12 - 5	90467-11823	5 - 23
4VP-F6225-00	27 - 20	4VP-F840K-00-1V	26 - 15	4VP-H4169-00	32 - 15	5PJ-XF748-00	25 - 8		20 - 8	90467-24140	5 - 9
4VP-F6240-00	23 - 5	5JU-F840K-10-1V	26 - 15	4VP-H4169-10	32 - 15	90101-06878	22 - 13		23 - 3	90468-02033	4 - 13
4VP-F6241-00	23 - 4	3GF-H1403-V0	28 - 2	4VP-H4198-00	32 - 8	90102-10031	16 - 3	90185-14124	22 - 15	90468-12006	16 - 5
4VP-F6260-02	23 - 8	4VP-H1800-20	29 - 1	4VP-H430A-00	32 - 1	90105-08121	16 - 2	90201-06380	13 - 11		25 - 6
4VP-F6262-00	23 - 11	4DM-H1801-00	29 - 2	3UH-H4314-10	32 - 10	90105-10036	23 - 2	90201-064J1	17 - 37	90480-11866	3 - 2
4VP-F6266-00	23 - 13	3NW-H1828-V0	29 - 5	4VP-H4317-00	32 - 2	90109-063F1	19 - 11	90201-08088	9 - 10	90480-12497	3 - 7
4VP-F6280-00	27 - 7	3KW-H1940-02	36 - 13	4VP-H4318-00	32 - 3	90109-06577	34 - 13	90201-10118	24 - 10		5 - 26
4VP-F6290-00	27 - 6	3GF-H1960-00	35 - 1	4VP-H431V-00	32 - 7	90109-10473	25 - 13	90201-142M6	22 - 14	90480-16278	14 - 16
4VP-F6311-01	23 - 7	5HK-H2100-10	36 - 8	4VP-H4331-00	32 - 5	90110-10811	21 - 2	90201-155G5	9 - 16	90501-08845	4 - 12
4VP-F6312-01	23 - 10	1NT-H2151-00	36 - 10	4VP-H4332-00	32 - 6	90116-07834	1 - 7	90201-158K9	11 - 4	90501-08868	18 - 16
4VP-F6321-02	23 - 9	5DA-H2176-00	25 - 19	4VP-H4337-00	32 - 9	90119-05062	17 - 39	90201-163G6	9 - 4	90501-10312	34 - 15
1MH-F6329-00	6 - 23	4VP-H2310-01	36 - 3	4VP-H4351-00	32 - 11	90119-05071	36 - 19	90201-16800	10 - 23	90501-165J7	23 - 20
4VP-F6351-01	23 - 15	4VP-H2370-00	36 - 6	4VP-H4359-00	32 - 4	90119-06079	25 - 18	90201-203E7	22 - 16	90501-29517	12 - 8
4VP-F637G-00	23 - 17	4VP-H2372-00	36 - 7	4VP-H4519-00	33 - 13		33 - 9	90202-05193	18 - 6	90501-430K3	10 - 12
4VP-F6393-00	23 - 16	4VP-H2501-03	35 - 3	4VP-H4700-00	33 - 1	90119-06802	15 - 2	90202-10120	25 - 5	90506-16447	22 - 9
4VP-F7111-01	25 - 1	4VP-H2552-00	35 - 4	4TE-H4714-00	33 - 2	90119-06821	13 - 2	90202-26142	17 - 47	90506-26805	25 - 15
4CW-F7114-00	25 - 2	5JU-H2590-00	36 - 9	4VP-H4721-00	33 - 5		25 - 9	90202-26166	29 - 6	90506-32857	25 - 7
4VP-F7311-01	25 - 12	4VP-H2590-10	36 - 9	4VP-H4743-00	33 - 6	90119-06857	3 - 14	90208-12050	10 - 28	90508-32768	9 - 14
5JU-F7311-10	25 - 12	4VP-H2910-00	34 - 1	3KW-H5130-00	33 - 11	90149-05821	27 - 12	90208-15807	11 - 5	91317-06016	19 - 21
5PJ-F7411-00	25 - 16	4VP-H3310-00	30 - 1	3GF-H5370-01	36 - 15		27 - 18	90209-14800	10 - 26	91317-06025	8 - 21
5PJ-F7421-00	25 - 17	4VP-H3311-00	30 - 3	4DM-H5540-00	36 - 1	90149-06011	18 - 5	90209-18112	2 - 7		24 - 7
45U-F8100-00	12 - 11		30 - 8	4KX-H5550-00	28 - 9	90153-06800	7 - 5	90240-10137	25 - 3	91317-06035	8 - 22
5JU-F8100-01	12 - 11	4VP-H3312-00	30 - 2	3XG-H5560-00	28 - 1	90153-06839	36 - 5	90241-10015	19 - 7	91317-06045	8 - 23
3TL-F8111-00	12 - 11	4VP-H3313-00	30 - 5	3GF-H5580-V0	28 - 3	90159-05820	27 - 11	90249-12008	23 - 19		19 - 20
23Y-F8175-00	12 - 12		30 - 10	4VP-H5720-00	36 - 12		27 - 17	90280-03017	2 - 8	91318-06020	5 - 7
4VP-F8257-01	26 - 19	4VP-H3320-00	30 - 6	53X-H5753-00	36 - 18	90159-05831	27 - 3	90338-16148	26 - 18		8 - 15
4VP-F8300-01	26 - 8	4VP-H3322-00	30 - 7	3GF-W0041-00	24 - 2	90159-06056	36 - 2	90380-15817	9 - 15		29 - 7
5XP-F8311-00-P0	26 - 2	4VP-H3331-00	33 - 7	5JU-W0045-00	21 - 11	90159-06811	26 - 20	90387-068F8	13 - 3	91318-06035	8 - 8
5XP-F8311-00-P1	26 - 2	4VP-H3332-00	33 - 4	3XG-W0047-00	21 - 6	90159-06812	26 - 7	90387-068J5	3 - 6		8 - 14
5XP-F8311-00-P2	26 - 2	4VP-H3342-00	33 - 3	3XG-W0048-00	21 - 7	90159-06822	14 - 3		5 - 25	91810-14807	8 - 13
5XP-F8311-00-WL	26 - 2	1MH-H3350-V0	35 - 7	3XG-W0057-00	21 - 5	90160-05803	27 - 4	90387-104U5	20 - 10		8 - 20
5PN-F832K-00	26 - 4	4KP-H3371-01	35 - 8	4VP-W1441-00	5 - 10	90163-05800	32 - 16	90387-168N7	10 - 22	91812-16805	8 - 7
5XP-F832K-00	26 - 4	3XY-H3390-01	35 - 10	4VP-W1442-00	5 - 13	90167-03800	23 - 12	90387-178N6	2 - 12	91A10-07056	18 - 12
5PN-F832L-00	26 - 5	4VP-H3509-00	31 - 3	4VP-W2620-03	23 - 6	90176-06065	7 - 16	90401-10805	24 - 9	92901-04100	28 - 8
5XP-F832L-00	26 - 5	4VP-H3510-00	31 - 1	4VP-X2172-00-PA	14 - 5	90179-06411	23 - 18	90430-08119	8 - 27	92907-06200	7 - 15
5FM-F8349-00	26 - 9	3GF-H3517-00	31 - 4	4VP-X2172-10-P8	14 - 5	90179-07381	1 - 8	90445-05431	4 - 10	92907-06600	19 - 22
4VP-F834V-00	26 - 6	4VP-H3517-00	31 - 5	4VP-X2172-20-WL	14 - 5	90179-10609	10 - 16	90445-078A3	18 - 14	92907-12600	28 - 10
4VP-F8385-11	26 - 12	4TE-H3518-00	31 - 6	4VP-X2172-B0-P0	14 - 5	90179-25615	17 - 46	90445-105H0	18 - 15	93101-20169	2 - 11
4VP-F838K-00	26 - 21	4VP-H353K-00	31 - 2	4VP-X2173-00-PA	14 - 10	90179-28415	10 - 14	90460-27815	15 - 8	93101-21801	10 - 18
5JU-F838K-00	26 - 21	4VP-H3550-02	31 - 8	4VP-X2173-10-P8	14 - 10	90183-05807	13 - 8	90460-35260	26 - 24	93102-17467	10 - 3
5PN-F8391-00	26 - 4	4VP-H3912-00	34 - 2	4VP-X2173-20-WL	14 - 10		13 - 15	90460-41191	5 - 27	93102-17838	20 - 4
5XP-F8391-00	26 - 4	3XG-H3915-00	34 - 3	4VP-X2173-B0-P0	14 - 10		14 - 8	90464-16801	4 - 11	93102-22464	2 - 10

NUMERICAL INDEX
INDICE NUMERICO

PART NO. CODIGO N°	REF. NO.	PART NO. CODIGO N°	REF. NO.	PART NO. CODIGO N°	REF. NO.	PART NO. CODIGO N°	REF. NO.	PART NO. CODIGO N°	REF. NO.	PART NO. CODIGO N°	REF. NO.
93102-25270	11 - 10	95707-10500	22 - 6	97707-50125	5 - 21						
93104-19097	28 - 4	9570L-10500	21 - 3	97707-60540	3 - 9						
93104-33800	10 - 9	95807-06010	17 - 42	98501-04008	28 - 7						
93210-07890	22 - 7	95807-06012	13 - 5	98501-05010	28 - 6						
93210-108B1	25 - 4		13 - 10	98501-05020	28 - 5						
93210-14805	8 - 25		27 - 13	98506-05025	34 - 9						
93210-23614	29 - 4		27 - 19	98506-05035	34 - 10						
93210-368G9	10 - 10	95807-06014	26 - 22	98507-03006	6 - 15						
93210-44678	29 - 3	95807-06016	32 - 12	98507-04012	6 - 21						
93210-64893	3 - 13	95807-08014	27 - 14	98507-05010	19 - 18						
93306-003Y4	8 - 4	95807-08016	8 - 26		23 - 14						
	9 - 2	95807-08035	12 - 10		30 - 11						
93306-004X7	11 - 9	9580L-06012	17 - 41		35 - 2						
93306-200Y1	10 - 4	95817-06020	17 - 36	98507-05014	4 - 14						
	11 - 3	95817-08020	7 - 6	98507-05020	34 - 5						
93306-203YE	10 - 2	95817-08030	7 - 7	98507-05030	34 - 6						
	11 - 12	95827-08030	21 - 12	98507-06010	35 - 9						
93306-205Y6	2 - 9	97007-06016	19 - 16	98507-06012	8 - 29						
93306-300Y4	20 - 5		36 - 4		8 - 32						
93310-21403	2 - 17	97017-06010	7 - 10		9 - 12						
93310-41810	2 - 4	97017-06025	9 - 19	98507-06016	28 - 12						
93311-315Y2	11 - 2	97507-05510	15 - 5	98507-06020	36 - 16						
93315-108Y4	9 - 8	97517-06510	7 - 12	98706-04012	24 - 5						
93410-20823	11 - 8	97607-03206	5 - 4	98980-06010	7 - 18						
93450-16115	2 - 16	97607-04108	6 - 14	99009-15400	9 - 17						
93450-35015	9 - 3	97607-04112	6 - 4	99009-17400	8 - 10						
93501-04011	17 - 51	97607-06220	3 - 8	99009-19400	4 - 17						
93503-16003	17 - 45		5 - 24	99009-42500	11 - 11						
93603-12827	4 - 16		8 - 34								
93900-00802	20 - 7	9760L-06216	35 - 5								
	22 - 4	97707-40514	3 - 5								
94112-108S3	20 - 6	97707-40610	30 - 4								
94113-108S4	22 - 3		30 - 9								
94700-00825	1 - 3	97707-40616	33 - 8								
95027-06020	26 - 16	97707-50012	13 - 13								
95307-06600	36 - 14		14 - 2								
95307-12600	28 - 11		14 - 9								
95307-12700	10 - 29		14 - 13								
95607-05100	34 - 4		14 - 17								
95607-06100	17 - 38		14 - 19								
	34 - 14		32 - 14								
95607-12200	12 - 3	97707-50016	13 - 7								
95707-05300	33 - 12		13 - 14								
95707-06500	18 - 2		25 - 11								
	19 - 4		26 - 11								
	19 - 6		26 - 13								
	19 - 14		31 - 7								
95707-10500	16 - 4		31 - 7								